



Germline genetic variation in prostate susceptibility does not predict outcomes in the chemoprevention trials PCPT and SELECT

Mahbub Ahmed¹, Chee Goh¹, Edward Saunders¹, Clara Cieza_Borrella¹, PRACTICAL consortium[‡], Zsofia Kote-Jarai^{*,1}, Fredrick R. Schumacher^{*,2}, Ros Eeles^{1,*}

¹The Institute of Cancer Research, Royal Marsden Hospital, NHS Foundation Trust, 123 Old Brompton Road, SW7 3RP, UK

²Department of Epidemiology and Biostatistics, Case Western Reserve University; Seidman Cancer Center, University Hospitals, Cleveland, OH, USA.

Abstract

Background—The development of prostate cancer can be influenced by genetic and environmental factors. Numerous germline SNPs influence prostate cancer susceptibility. The functional pathways in which these SNPs increase prostate cancer susceptibility are unknown. Finasteride is currently not being used routinely as a chemoprevention agent but the long term outcomes of the PCPT trial are awaited. The outcomes of the SELECT trial have not recommended the use of chemoprevention in preventing prostate cancer. This study investigated whether germline risk SNPs could be used to predict outcomes in the PCPT and SELECT trial.

Methods—Genotyping was performed in European men entered into the PCPT trial (n=2434) and SELECT (n=4885). Next generation genotyping was performed using Affymetrix® Eureka™ Genotyping protocols. Logistic regression models were used to test the association of risk scores and the outcomes in the PCPT and SELECT trials.

Results—Of the 100 SNPs, 98 designed successfully and genotyping was validated for samples genotyped on other platforms. A number of SNPs predicted for aggressive disease in both trials.

[‡]Members from the Prostate Cancer Association Group to Investigate Cancer Associated Alterations in the Genome (PRACTICAL) consortium are provided in the Supplement/foot notes. Information of the consortium can be found at <http://practical.icr.ac.uk/>

Licensing and Open Access If this paper is accepted then all authors will observe the terms of the licence to Publish that will be signed on their behalf and will seek the consent of the publishers acting for the owners of the journal in any other circumstance. Users may view, print, copy, and download text and data-mine the content in such documents, for the purposes of academic research, subject always to the full Conditions of use: http://www.nature.com/authors/editorial_policies/license.html#terms

Corresponding author: Dr Mahbub Ahmed, The Institute of Cancer Research, The Institute of Cancer Research and Royal Marsden NHS Trust, 123 Old Brompton Road. London SW7 3RP. UK, Tel: + 44 208 722 4017, Mahbub.ahmed@icr.ac.uk.

*Joint last authors

Ethical Considerations

All studies have the necessary ethical approval and documentation can be provided if necessary

Use of English Language

No assistance has been received in the writing and editing of this manuscript other than the named authors of the manuscript

Communication with the media and embargo

No plans have been made to publicise this paper with the media

Men with a higher polygenic score are more likely to develop prostate cancer in both trials, but the score did not predict for other outcomes in the trial.

Conclusion—Men with a higher polygenic risk score are more likely to develop prostate cancer. There were no interactions of these germline risk SNPs and the chemoprevention agents in the SELECT and PCPT trials.

Introduction

Prostate cancer accounts for a quarter of cancer diagnoses in men in the UK and is the fourth most common cancer worldwide with an estimated 1.1 million men diagnosed in 2012 (1). Screening strategies have not led to their routine clinical use in daily practice, due to an over-diagnosis of indolent cancers (2).

Due to its biology, prostate cancer is ideally suited target for chemoprevention because of its step-wise biological development. Prostate cancer may have precursor lesions such as atypical small acinar proliferation and high grade prostatic intraepithelial neoplasia which may appear many years before cancer is diagnosed. This high risk population with these precursor lesions could be targeted for chemoprevention (3). Prostate cancer also has a long latent period from its development to its eventual clinical manifestation. Chemoprevention could also be used to prevent these early malignant lesions developing further and therefore many men could be spared diagnostic procedures and potentially toxic systemic treatments (4).

It is thought that the risk of prostate cancer development could be potentially modifiable by dietary and other lifestyle factors. Large epidemiological studies have shown that migrants who have moved from areas of low prostate cancer incidence such as Korea and Japan to the USA have developed prostate cancer rates similar to their native inhabitants (5, 6). Environmental factors are attributable to this change of risk and some of these could be potentially modifiable by dietary changes (6). There are also causal links between androgen exposure and the development of prostate cancer, which is also potentially modifiable (7). The need to answer the question of the role of chemoprevention in prostate cancer was the aim of 2 large randomised controlled trials: The Prostate cancer Prevention Trial (PCPT) and The Selenium and Vitamin E Cancer Prevention Trial (SELECT). The biological rationale for the agents used in the trial, trial schema and results can be found in more detail elsewhere (8, 9). In summary, 18,880 men were eligible and randomized on the PCPT to receive placebo or finasteride. The results of the PCPT trial showed that Prostate cancer was detected in 803 of the 4368 men in the finasteride group and 1147 of the 4692 men in the placebo group who had data for analyses. There was a 24.8% reduction in prevalence over the seven-year period. Tumours with a Gleason score 7–10 were more common in the finasteride group (280 of 757 tumours (37.0%)), than in the placebo group (237 of 1068 tumours (22.2 percent) ($P < 0.001$ for the comparison between groups) (8). The long term results of the PCPT trial showed that the 10 year survival from prostate cancer was equivalent between the 2 groups (10).

In the SELECT trial, 35,533 men were randomised to receive selenium or vitamin E, or both or neither. The SELECT trial was closed early because the interim analysis showed that

neither selenium, vitamin E, nor the combination prevented prostate cancer. The long term results of the SELECT trial showed that men taking vitamin E had increased incidence of prostate cancer compared with placebo, which was statistically significant (9). Genetic variations influencing the effects of these chemoprevention agents have been reported from the PCPT and SELECT trials (11–14). However these studies have only used a candidate gene approach to look for association in comparison with our study which has followed up validated risk single nucleotide polymorphisms.

At the time of undertaking these analyses, 100 germline risk single nucleotide polymorphisms (SNPs) had been identified in genome wide association studies (15, 16). The 100 SNPs account for approximately 33% of familial risk of prostate cancer (16). If polygenic risk scores are calculated, the top 10% of men in the highest risk stratum have an approximately 2.9-fold relative risk of prostate cancer compared with the average of the population, whilst the top 1% of men have a 5.7-fold relative risk in comparison with the population average (16). If these polygenic SNP scores could be incorporated into screening with the addition of known risk factors (age, race, family history), then men with the highest risk of prostate cancer development could be targeted for more intensive screening or intervention.

Traditional genotyping technologies are currently not suited to provide fast accurate outputs that could be used in prospective clinical trials (17). Genotype calling from next generation sequence techniques may be able to overcome these issues and therefore be more suited for everyday clinical use (18). We have worked with Eureka Genomics (Hercules, California; previously affymetrix now ThermoFisher Scientific) to design and validate a next generation genotyping assay in these analyses.

While the functional role of how these SNPs influence cancer predisposition is under investigation, evidence suggests that this may be through various pathways (19). Therefore, the hypothesis underlying this study was that common genetic variants involved in prostate cancer pre-disposition may have a role in tumour formation but also influence the effects of the chemoprevention agents. In breast cancer, evidence has shown that chemoprevention with tamoxifen reduces the risk of contralateral breast cancer for those women who have variants in the *BRCA2* gene (20). The aim of this study was to investigate the association of prostate cancer germline risk SNPs and their influence on the chemoprevention agents in the PCPT and SELECT trials.

Materials and Methods

Patients

The details of the PCPT study can be found in more detail elsewhere (8). Informed consent as obtained from all patients. In summary, healthy men aged 55 years or older, with a normal digital rectal examination (DRE), American Association Urology Score of less than 20 and no clinically significant co-morbidity were entered into the trial. The prostate specific antigen (PSA) on entry into the trial was required to be 3.0ng/ml or lower. Men were randomised to receive Finasteride or placebo. The men underwent annual DRE, and measurements of PSA. If the DRE was suspicious for cancer or the adjusted PSA > 4.0

ng/ml, then these men were recommended to undergo a prostate biopsy. If these investigations were normal or biopsy was negative, men were followed up for a total of 7 years and an end of study biopsy was performed. The end of study biopsy identified additional prostate cancers among men with neither a suspicious DRE or elevated PSA and confirmed that the controls did not have prostate cancer. A total of 18,880 eligible men were randomised into the trial. Our institution received DNA samples from 2434 cases and controls from the PCPT study.

The details of the SELECT trial can be found in more detail elsewhere (21). Healthy men entered the study and were aged 55 years or over (Afro-American men were aged 50 or older), had a normal DRE and a PSA ≤ 4 ng/ml. Participants were randomised into one of 4 groups: Selenium alone, Vitamin E alone, Selenium and Vitamin E or placebo. Men were followed every 6 months and suggested to have an annual DRE and PSA. Men were recommended to undergo PSA and DRE testing and prostate biopsy based on local care guidelines. Upon a diagnosis of prostate cancer, men were monitored annually.

A total of 35,553 men were randomised into the trial. Our institution received DNA samples from 4885 men, which were samples that were selected to be analysed as part of a case-cohort study.

Laboratory Methods, Genotyping and Quality Control

DNA was collected by white blood cells from participants in the PCPT and SELECT trials and extracted at the National Cancer Institute (22). 30 μ l of DNA was received at The Institute of Cancer Research; 5 μ l was sent for genotyping for the purpose of this analysis.

At the time of designing the genotyping assay the latest 100 SNP panel was used (23). Supplementary table 2 lists the 100 known prostate cancer susceptibility SNPs at that time.

The 100 SNP panel was developed by Affymetrix®, now a part of ThermoFisher Scientific. The samples were genotyped using the Affymetrix® Eureka™ Genotyping protocols. The Eureka genotyping assay is a ligation-dependent PCR reaction, which uses interrogation site bar codes contained within the ligation probes, as well as sample index bar codes added during the amplification step. Next generation sequencing libraries were created and short cycle sequence data were generated from the prepared libraries. Analysis software was used to tabulate the number of reads that contain each combination of sample, locus and allele bar code (as appropriate). The genotype was determined by in-house software using Affymetrix® Eureka™ protocols.

In order to validate this new genotyping technique two methods were used. Firstly, known genotypes of overlapping samples from the iCOGs custom array and the Affymetrix panel were contrasted (24). Secondly the observed minor allele frequencies from the Affymetrix panel were compared with the genotypes of overlapping samples on a custom high-throughput array by case and control status (25). The minor allele frequencies between the two techniques were highly correlated ($r^2 > 0.99$).

Standard quality control measures were applied to remove variants with missing rates $> 10\%$ or displayed genotype frequency deviating from those expected under Hardy-Weinberg

equilibrium ($P < 0.05$). Samples with less than 90% genotyping rate were also removed Table 3.

Measured Outcome

On entry into the PCPT and SELECT trials, phenotypic information was collected on all participants; further detailed information on the phenotypic information collected can be found in the individual trial protocols (26, 27).

Men who self-reported to be of European origin were only included in this study as the vast majority of the germline SNPs used in this analysis were discovered in GWAS from populations of European descent. Family history (FHx) was defined as men who had one or more first degree relatives affected with prostate cancer. Biopsies that were positive for prostate cancer were reviewed by the local pathologist at the participating centre, and for the PCPT trial and also reviewed centrally (8, 21). High grade prostate cancer (non-indolent prostate cancer) was defined as a Gleason score ≥ 7 . A summary of basic phenotype information for the DNA received from PCPT and SELECT can be found here Table 1.

Statistical Analysis

A polygenic risk score was calculated by summing the genotype dosage for all variants for an individual. The log-odds ratios used to weight the risk score were taken from the OncoArray Meta-analysis (28). Two types of risk score were calculated:

$$\text{Non-weighted, for patient } i: \quad \text{risk score}_i = \sum_1^j G_{ij}$$

$$\text{Weighted, for patient } i: \quad \text{weighted risk score}_i = \sum_1^j \beta_j G_{ij}$$

j = variants 1 – 100

β_j = is the per allele log-odds ratio for the risk of prostate cancer associated with variant j

G = risk allele dosage

Within each cohort of both trials age and body mass index (BMI) were equally distributed. Logistic regression was used to test the association of case/control and Gleason score and the polygenic risk score. Family history was also used as a covariate in the analyses. The polygenic risk score was divided into quartiles for the logistic regression model and interaction tested. For each individual SNP the χ^2 test was used to test the association with overall prostate cancer and sub-strata defined by Gleason grade. Statistical significance was determined at a level of $P < 0.05$. All analyses were performed in the statistical package R 3.2.2 (29).

Power Calculations

The power was calculated using the MAF and OR from the Oncoarray paper which was the largest GWAS performed to date (30). A significance level of $\alpha = 0.05$ was used and calculated using a genetic power calculator (31). The results can be seen in supplementary table 1. The power ranged for PCPT (5–96%) and SELECT (5–99%). The power was greater in the SELECT trial as there were greater number of participants the PCPT. Overall the study was underpowered however there was a correlation between those with a high power and the signal seen of the SNP in PCPT/SELECT. A multiple comparison adjustment was not performed as known variants were analysed in PCPT/SELECT. Power was not calculated by randomization arm as the power would have been too low.

Results

The characteristics of the participants of the trial are summarised in Table 1. Of the 100 SNPs, 98 SNPs were designed successfully. Non-Europeans were removed from the analysis and summary of the quality control is shown in Table 3.

The single SNP association in both trials shows multiple SNPs that are associated with developing prostate cancer at a pre-defined significance level of $P < 0.05$ (Figure 1, Figure 2, Figure 3 (Table 3, Table 4). In the PCPT trial rs4430796 is associated in the finasteride arm with development of prostate cancer; the SNP resides near the gene *HNF1B*. There are also multiple SNPs which are significant for the association with high grade and low grade Gleason score (Table 4). In the PCPT trial as the polygenic risk score increases the beta predicting prostate cancer outcome increases and this is statistically significant. With the addition of Finasteride the beta reduces but it is not statistically significant (Table 6). In the SELECT trial the polygenic risk score did not predict cancer outcome except for those men who are in group 4 of the weighted risk score. There was no interaction between the interventions in the PCPT and SELECT trials and the polygenic risk score.

In the PCPT trial, the use of drug intervention did predict the outcome of developing high grade prostate cancer, but the chemopreventions in the SELECT trial were null (Table 7). The weighted polygenic risk score was consistently higher in cases than controls in all groups and this was also statistically significant ($P < 0.05$) in both PCPT and SELECT trials (Figure 4, Figure 5). Men in the study who had a first degree relative with prostate cancer had a higher polygenic SNP score in both studies, but this was not statistically significant ($P > 0.05$).

Discussion

This study confirmed that men in both the PCPT and SELECT trials who developed prostate cancer had a higher polygenic risk score than men who didn't develop prostate cancer. The study found no evidence that a high polygenic risk score in combination with other risk factors such as family history could predict if the drug interventions could reduce prostate cancer incidence or development of high grade prostate cancer. Some individual SNPs were detected to predict the likelihood of developing cancer in the individual study arms but these analyses were limited by the power. Rare variants such as those found in sequencing of

BRCA1 and *BRCA2* were not included in this analysis as they require sequencing rather than genotyping in larger cohorts using different statistical analyses. This study was limited to prostate cancer risk associated with common variants of European ancestry and is not useable in other ethnic groups.

The results of the PCPT trial showed a 24.8% reduction in prostate cancer, but the chemoprevention in the SELECT trial did not reduce prostate cancer incidence (8, 9). Prostate cancer SNPs are mostly found in intronic regions of genes, and therefore functionally it is not clear how these SNPs increase prostate cancer risk.

Genetic variations in the pathways in which the chemoprevention agents act may influence the efficacy of the agent. Finasteride acts by inhibiting the enzyme 5 α reductase which is mediated by genes of the *SRF5A* family (32). Polymorphisms in the *SRFA* genes have been reported which affect the efficacy of Finasteride (33, 34). Genetic variations in the selenoprotein genes impact on plasma selenium levels, and recent evidence suggests that this may be associated with locally advanced or aggressive prostate cancer (14). Variations in vitamin E levels may also be modified by genetic variations in vitamin E related genes and an association between these and a lower incidence of prostate cancer has been found (12). If the above mechanisms that affect the outcome of these chemoprevention agents were in common functional pathways with the prostate cancer risk SNPs, men in the highest polygenic risk score would be more likely to see some of the above benefits from chemoprevention. Many of the pathways in which these genetic variants affect drug efficacy remain unknown, which therefore could be accounting for the null results of this study.

In the single SNP association for the development of prostate cancer a number of SNPs pass the significance level. Functionally it is not clear how these associations are linked but there are potentially some interesting regions. One interesting SNP which was statistically significant in the Finasteride arm of the PCPT trial was rs4430796 which resides near the gene *HNF1B* (35). This SNP is in strong linkage disequilibrium with SNP rs757210. It has been reported that inheriting the risk allele for one of these SNPs increases the likelihood of developing prostate cancer (OR =1.22, 95% CI 1.15 – 1.30; P=1.4 \times 10⁻¹¹), but reduces the risk of developing type 2 diabetes (OR=0.91, 95% CI 0.88–0.93; P=8 \times 10⁻¹⁰) (36). The association between the phenotypes of type 2 diabetes and prostate cancer was further investigated in the PCPT trial. This showed that type 2 diabetes was associated with a 47% reduction of low grade prostate cancer and 28% reduction of high grade prostate cancer (37). When the authors looked at the association of obesity and prostate cancer they found that increased obesity reduced low grade prostate cancer but increased high grade prostate cancer (37). The authors also showed that there was no correlation between obesity and type 2 diabetes, suggesting an independent pathway in which diabetes protects against prostate cancer. Our analysis supports these data which shows that diabetes incidence is lower in men who develop prostate cancer in the placebo arm and inherit one of the SNPs near *HNF1B*. However this association is not seen in men who have Finasteride who have higher rates of type 2 diabetes and could possibly suggest a metabolic interaction between the drug and the SNP.

On analyses of the SNP association with high grade and low grade Gleason score a number of SNPs show an association with Gleason grade in the individual trial arms. An example in the Finasteride arm of the PCPT, SNP rs7127900 showed a statistically significant reduction in the odds ratio of developing high grade prostate cancer ($P=0.04$, $OR = 0.67$). Interestingly SNP rs7127900 has been shown to have a biological interaction with insulin-like-growth-factor-2 (IGF-2) (38). Analyses from the PCPT trial have shown that serum levels of IGF were not correlated with prostate cancer development; however men who have high levels of IGF are more likely to be on anti-diabetic drugs such as metformin which have shown to have anti-cancer properties (39). In the SELECT trial SNP rs12621278 in the Vitamin E arm was also associated with a reduced odds ratio of developing high grade prostate cancer. The SNP rs12621278 resides near the integrin gene *ITGA6* which has been shown to be associated with prostate cancer progression and development (40). Vitamin E could possibly be interacting with this pathway (41).

So far 33% of common genetic variants that predict the familial risk of prostate cancer have been discovered (42). Men in the top 1% risk distribution have a 5.7 fold relative risk of developing prostate cancer compared with the average population being profiled (24). The National Institutes of Health GAME-ON initiative has discovered a further 63 new prostate cancer susceptibility SNPs. Further work needs to be performed to understand if these new SNPs will help understand the biological rationale for chemoprevention (28)

In summary this work has showed that a high polygenic risk score can predict the development of prostate cancer but there is no interaction with chemoprevention agents such as finasteride and selenium/vitamin E. This is an important null finding as population risk stratification will be undertaken in coming years for disease detection and prevention strategies. There is therefore no evidence from these results that certain risk groups are individually more likely to benefit from these two types of chemoprevention and other types of agent will need to be tested to try to reduce risk of high grade cancers in men with higher polygenic risk scores.

Supplementary Material

Refer to Web version on PubMed Central for supplementary material.

Acknowledgments

Conflicts of Interest

Genotyping of the OncoArray was funded by the US National Institutes of Health (NIH) [U19 CA 148537 for ELucidating Loci Involved in Prostate cancer Susceptibility (ELLIPSE) project and X01HG007492 to the Center for Inherited Disease Research (CIDR) under contract number HHSN268201200008I]. Additional analytic support was provided by NIH NCI U01 CA188392 (PI: Schumacher).

The PRACTICAL consortium was supported by Cancer Research UK Grants C5047/A7357, C1287/A10118, C1287/A16563, C5047/A3354, C5047/A10692, C16913/A6135, European Commission's Seventh Framework Programme grant agreement n° 223175 (HEALTH-F2-2009-223175), and The National Institute of Health (NIH) Cancer Post-Cancer GWAS initiative grant: No. 1 U19 CA 148537-01 (the GAME-ON initiative).

We would also like to thank the following for funding support: The Institute of Cancer Research and The Everyman Campaign, The Prostate Cancer Research Foundation, Prostate Research Campaign UK (now Prostate Action), The Orchid Cancer Appeal, The National Cancer Research Network UK, The National Cancer Research Institute

(NCRI) UK. We are grateful for support of NIHR funding to the NIHR Biomedical Research Centre at The Institute of Cancer Research and The Royal Marsden NHS Foundation Trust.

Research reported in this publication was supported in part by the National Cancer Institute of the National Institutes of Health under Award Numbers U10 CA37429 and UM1CA182883. The content is solely the responsibility of the authors and does not necessarily represent the official views of the National Institutes of Health.

Thanks to the study leadership of PCPT and SELECT for sharing their samples and clinical data

All funding support for this study is as described above

References

1. Globocan. Prostate Cancer: Estimated Incidence, Mortality and Prevalence Worldwide in 2012 2012 [cited 2015 November]. Available from: <http://globocan.iarc.fr/old/FactSheets/cancers/prostate-new.asp>.
2. Eckersberger E, Finkelstein J, Sadri H, Margreiter M, Taneja SS, Lepor H, et al. Screening for Prostate Cancer: A Review of the ERSPC and PLCO Trials. *Reviews in urology* 2009;11(3):127–33. [PubMed: 19918338]
3. Epstein JI, Herawi M. Prostate needle biopsies containing prostatic intraepithelial neoplasia or atypical foci suspicious for carcinoma: implications for patient care. *The Journal of urology* 2006;175(3 Pt 1):820–34. [PubMed: 16469560]
4. Sandhu GS, Nepple KG, Tanagho YS, Andriole GL. Prostate cancer chemoprevention. *Semin Oncol* 2013;40(3):276–85. [PubMed: 23806493]
5. Lee J, Demissie K, Lu SE, Rhoads GG. Cancer incidence among Korean-American immigrants in the United States and native Koreans in South Korea. *Cancer control : journal of the Moffitt Cancer Center* 2007;14(1):78–85.
6. Bosland MC. *Is There a Future for Chemoprevention of Prostate Cancer? Cancer prevention research (Philadelphia, Pa)* 2016.
7. Higgins B, Thompson IM. The Prostate Cancer Prevention Trial: current status. *The Journal of urology* 2004;171(2 Pt 2):S15–7; discussion S8. [PubMed: 14713747]
8. Thompson IM, Goodman PJ, Tangen CM, Lucia MS, Miller GJ, Ford LG, et al. The influence of finasteride on the development of prostate cancer. *The New England journal of medicine* 2003;349(3):215–24. [PubMed: 12824459]
9. Klein EA, Thompson IM Jr., Tangen CM, Crowley JJ, Lucia MS, Goodman PJ, et al. Vitamin E and the risk of prostate cancer: the Selenium and Vitamin E Cancer Prevention Trial (SELECT). *JAMA : the journal of the American Medical Association* 2011;306(14):1549–56. [PubMed: 21990298]
10. Thompson IM Jr., Goodman PJ, Tangen CM, Parnes HL, Minasian LM, Godley PA, et al. Long-term survival of participants in the prostate cancer prevention trial. *The New England journal of medicine* 2013;369(7):603–10. [PubMed: 23944298]
11. Chan JM, Darke AK, Penney KL, Tangen CM, Goodman PJ, Lee GS, et al. Selenium- or Vitamin E-Related Gene Variants, Interaction with Supplementation, and Risk of High-Grade Prostate Cancer in SELECT. *Cancer epidemiology, biomarkers & prevention : a publication of the American Association for Cancer Research, cosponsored by the American Society of Preventive Oncology* 2016;25(7):1050–8.
12. Major JM, Yu K, Weinstein SJ, Berndt SI, Hyland PL, Yeager M, et al. Genetic variants reflecting higher vitamin e status in men are associated with reduced risk of prostate cancer. *The Journal of nutrition* 2014;144(5):729–33. [PubMed: 24623848]
13. Tang L, Yao S, Till C, Goodman PJ, Tangen CM, Wu Y, et al. Repeat polymorphisms in estrogen metabolism genes and prostate cancer risk: results from the Prostate Cancer Prevention Trial. *Carcinogenesis* 2011;32(10):1500–6. [PubMed: 21771722]
14. Xie W, Yang M, Chan J, Sun T, Mucci LA, Penney KL, et al. Association of genetic variations of selenoprotein genes, plasma selenium levels, and prostate cancer aggressiveness at diagnosis. *The Prostate* 2016;76(7):691–9. [PubMed: 26847995]

15. Eeles R, Goh C, Castro E, Bancroft E, Guy M, Al Olama AA, et al. The genetic epidemiology of prostate cancer and its clinical implications. *Nature reviews Urology* 2014;11(1):18–31. [PubMed: 24296704]
16. Al Olama AA, Kote-Jarai Z, Berndt SI, Conti DV, Schumacher F, Han Y, et al. A meta-analysis of 87,040 individuals identifies 23 new susceptibility loci for prostate cancer 2014;46(10):1103–9.
17. Tsuchihashi Z, Dracopoli NC. Progress in high throughput SNP genotyping methods. *The pharmacogenomics journal* 2002;2(2):103–10. [PubMed: 12049172]
18. Nielsen R, Paul JS, Albrechtsen A, Song YS. Genotype and SNP calling from next-generation sequencing data. *Nature reviews Genetics* 2011;12(6):443–51. [PubMed: 21587300]
19. Hazelett DJ, Rhie SK, Gaddis M, Yan C, Lakeland DL, Coetzee SG, et al. Comprehensive functional annotation of 77 prostate cancer risk loci. *PLoS genetics* 2014;10(1):e1004102. [PubMed: 24497837]
20. Phillips KA, Milne RL, Rookus MA, Daly MB, Antoniou AC, Peock S, et al. Tamoxifen and risk of contralateral breast cancer for BRCA1 and BRCA2 mutation carriers. *Journal of clinical oncology : official journal of the American Society of Clinical Oncology* 2013;31(25):3091–9.
21. Lippman SM, Klein EA, Goodman PJ, Lucia MS, Thompson IM, Ford LG, et al. Effect of selenium and vitamin E on risk of prostate cancer and other cancers: the Selenium and Vitamin E Cancer Prevention Trial (SELECT). *JAMA : the journal of the American Medical Association* 2009;301(1):39–51. [PubMed: 19066370]
22. Hoque A, Goodman P, Ambrosone CB, Figg WD, Price DK, Kopp W, et al. Extraction of DNA from serum for high-throughput genotyping: findings from pilot studies within the Prostate Cancer Prevention Trial. *Urology* 2008;71(5):967–70. [PubMed: 18267333]
23. Ahmed M, Eeles RA. Germline genetic profiling in prostate cancer: latest developments and potential clinical applications. *Future Science OA* 2015;2(1).
24. Eeles RA, Olama AA, Benlloch S, Saunders EJ, Leongamornlert DA, Tymrakiewicz M, et al. Identification of 23 new prostate cancer susceptibility loci using the iCOGS custom genotyping array. *Nature genetics* 2013;45(4):385–91. [PubMed: 23535732]
25. Amos CI, Dennis J, Wang Z, Byun J, Schumacher FR, Gayther SA, et al. The OncoArray Consortium: A Network for Understanding the Genetic Architecture of Common Cancers. *Cancer epidemiology, biomarkers & prevention : a publication of the American Association for Cancer Research, cosponsored by the American Society of Preventive Oncology* 2017;26(1):126–35.
26. Group SWO. PCPT Resources Online: South Western Oncology Group; [cited 2016 June]. Available from: <http://swog.org/Visitors/pcpt/>.
27. Group SWO. SELECT Resources: South Western Oncology Group; [cited 2016 June]. Available from: <http://swog.org/Visitors/select/>.
28. Schumacher FR, Al Olama AA, Berndt SI, Benlloch S, Ahmed M, Saunders EJ, et al. Association analyses of more than 140,000 men identify 63 new prostate cancer susceptibility loci. *Nature genetics* 2018.
29. Team RC. R: A language and environment for statistical computing R Foundation for Statistical Computing Vienna, Austria 2014. Available from: <http://www.R-project.org/>.
30. Schumacher FR, Al Olama AA, Berndt SI, Benlloch S, Ahmed M, Saunders EJ, et al. Association analyses of more than 140,000 men identify 63 new prostate cancer susceptibility loci. *Nature genetics* 2018;50(7):928–36. [PubMed: 29892016]
31. Purcell S, Cherny SS, Sham PC. Genetic Power Calculator: design of linkage and association genetic mapping studies of complex traits. *Bioinformatics (Oxford, England)* 2003;19(1):149–50.
32. Price DK, Chau CH, Till C, Goodman PJ, Leach RJ, Johnson-Pais TL, et al. Association of androgen metabolism gene polymorphisms with prostate cancer risk and androgen concentrations: Results from the Prostate Cancer Prevention Trial. *Cancer* 2016.
33. Makridakis NM, di Salle E, Reichardt JK. Biochemical and pharmacogenetic dissection of human steroid 5 alpha-reductase type II. *Pharmacogenetics* 2000;10(5):407–13. [PubMed: 10898110]
34. Makridakis N, Akalu A, Reichardt JK. Identification and characterization of somatic steroid 5alpha-reductase (SRD5A2) mutations in human prostate cancer tissue. *Oncogene* 2004;23(44):7399–405. [PubMed: 15326487]

35. Painter JN, O'Mara TA, Batra J, Cheng T, Lose FA, Dennis J, et al. Fine-mapping of the HNF1B multicancer locus identifies candidate variants that mediate endometrial cancer risk. *Human molecular genetics* 2015;24(5):1478–92. [PubMed: 25378557]
36. Frayling TM, Colhoun H, Florez JC. A genetic link between type 2 diabetes and prostate cancer. *Diabetologia* 2008;51(10):1757–60. [PubMed: 18696045]
37. Gong Z, Neuhaus ML, Goodman PJ, Albanes D, Chi C, Hsing AW, et al. Obesity, diabetes, and risk of prostate cancer: results from the prostate cancer prevention trial. *Cancer epidemiology, biomarkers & prevention : a publication of the American Association for Cancer Research, cosponsored by the American Society of Preventive Oncology* 2006;15(10):1977–83.
38. Tao S, Wang Z, Feng J, Hsu FC, Jin G, Kim ST, et al. A genome-wide search for loci interacting with known prostate cancer risk-associated genetic variants. *Carcinogenesis* 2012;33(3):598–603. [PubMed: 22219177]
39. Chae YK, Arya A, Malecek MK, Shin DS, Carneiro B, Chandra S, et al. Repurposing metformin for cancer treatment: current clinical studies. *Oncotarget* 2016.
40. Cheng I, Plummer SJ, Neslund-Dudas C, Klein EA, Casey G, Rybicki BA, et al. Prostate cancer susceptibility variants confer increased risk of disease progression. *Cancer epidemiology, biomarkers & prevention : a publication of the American Association for Cancer Research, cosponsored by the American Society of Preventive Oncology* 2010;19(9):2124–32.
41. Bureyko T, Hurdle H, Metcalfe JB, Clandinin MT, Mazurak VC. Reduced growth and integrin expression of prostate cells cultured with lycopene, vitamin E and fish oil in vitro. *The British journal of nutrition* 2009;101(7):990–7. [PubMed: 18718045]
42. Al Olama AA, Kote-Jarai Z, Berndt SI, Conti DV, Schumacher F, Han Y, et al. A meta-analysis of 87,040 individuals identifies 23 new susceptibility loci for prostate cancer. *Nature genetics* 2014;46(10):1103–9. [PubMed: 25217961]

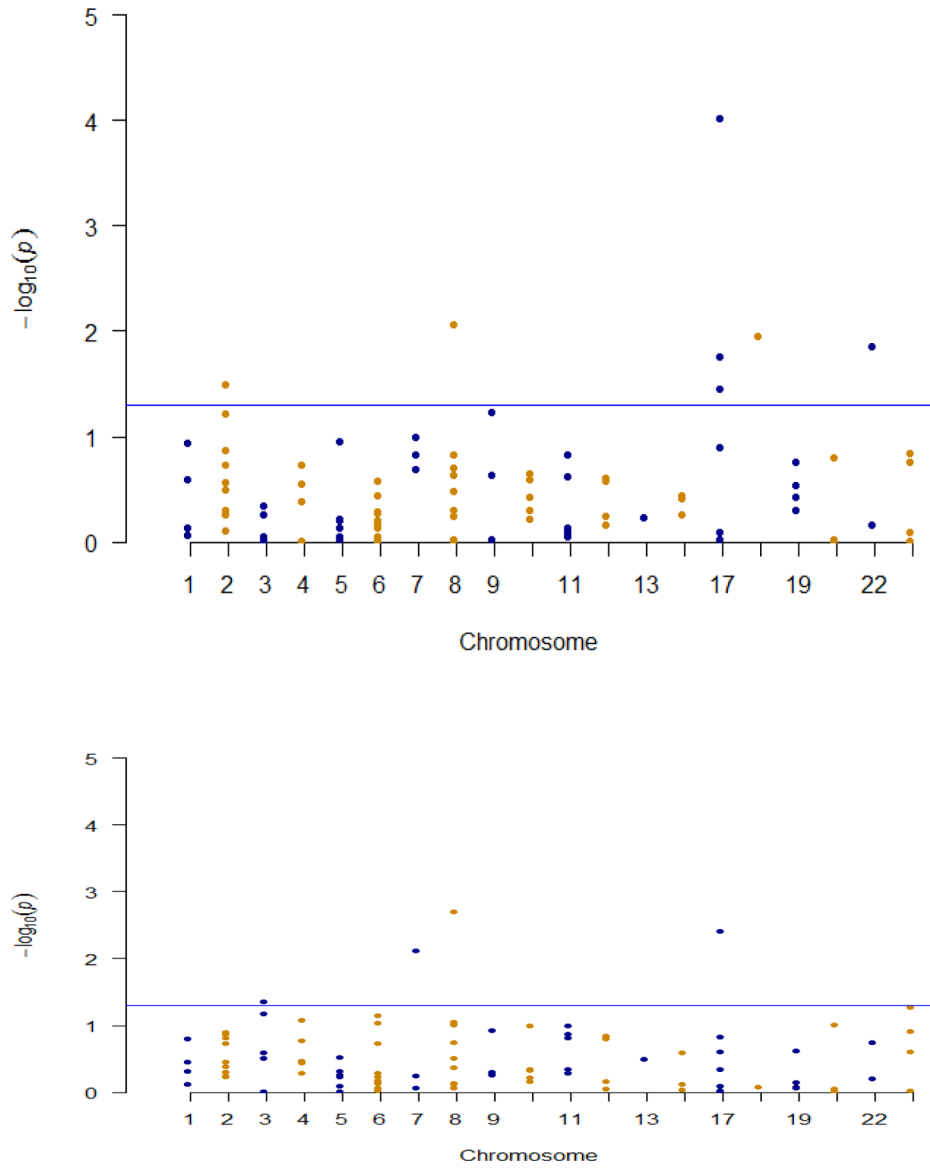


Figure 1- Manhattan plot showing the single SNP association of the placebo (above) and finasteride (below) arms in PCPT. Blue line represents significance level $P=0.05$.

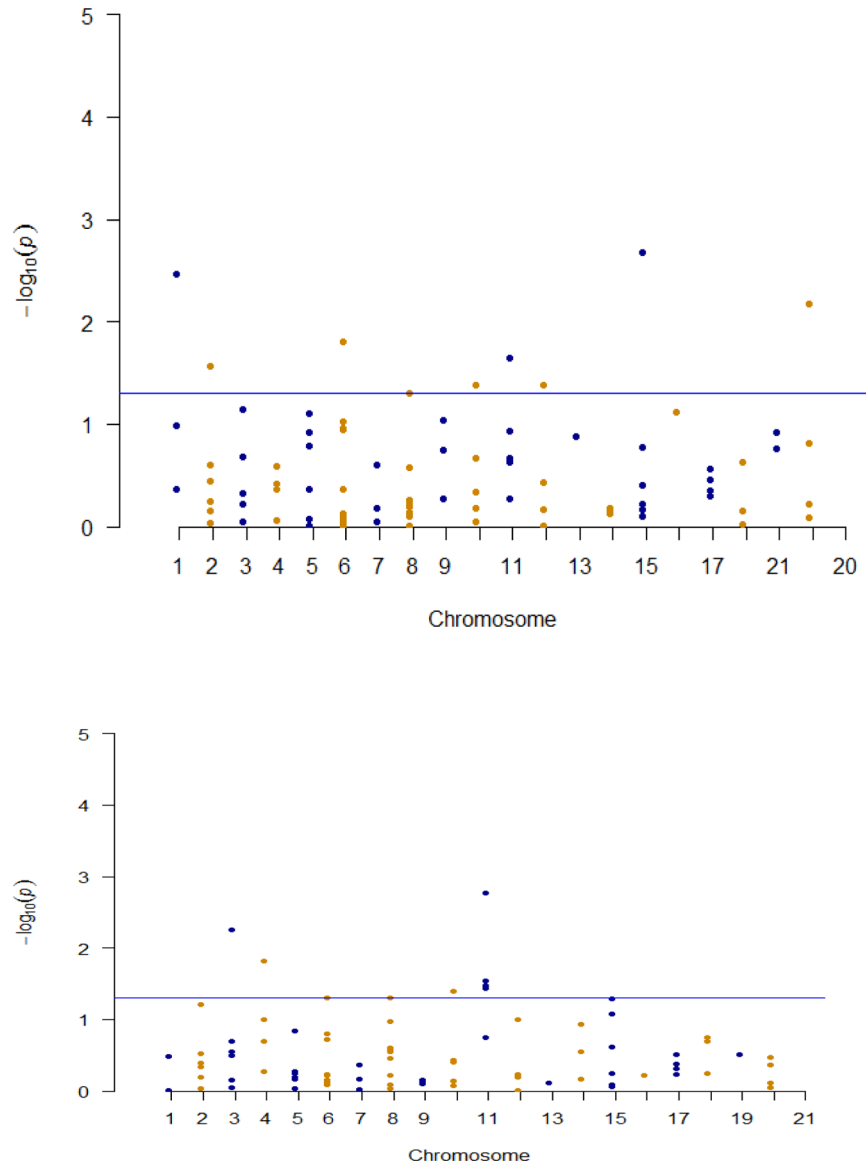


Figure 2 - Manhattan plot showing the single SNP association of the placebo (above) and selenium (below) arms in SELECT. Blue line represents significance level $P=0.05$.

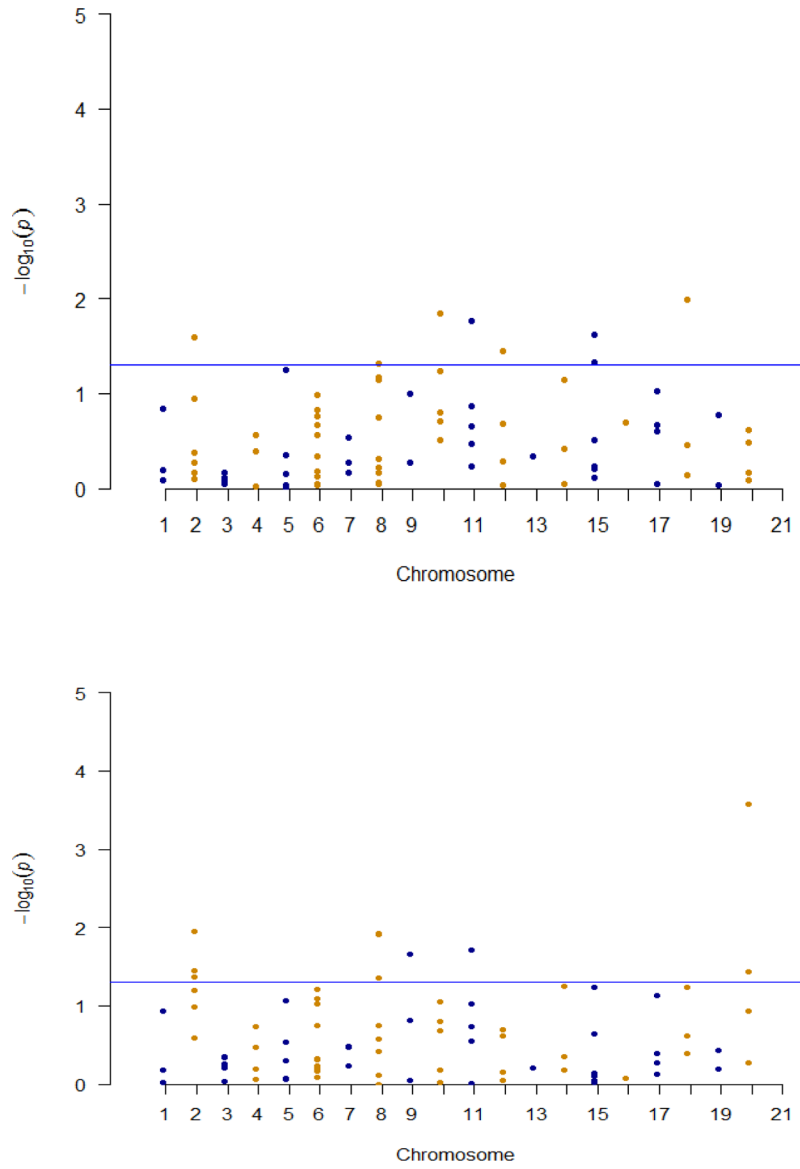


Figure 3 - Manhattan plot showing the single SNP association of the vitamin E (above) and selenium and vitamin E (below) arms in SELECT. Blue line represents significance level $P=0.05$.

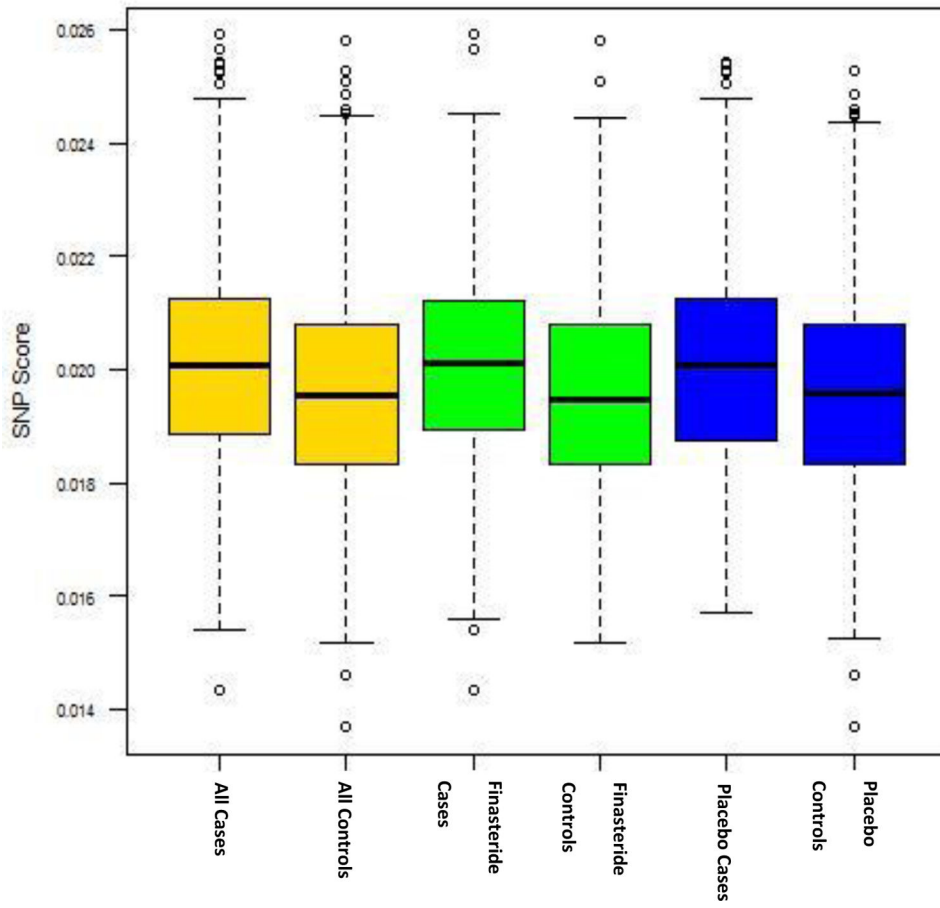


Figure 4 - Boxplot showing the weighted polygenic risk score which is higher in cases than controls and is statistically significant ($P < 0.05$) in the PCPT trial.

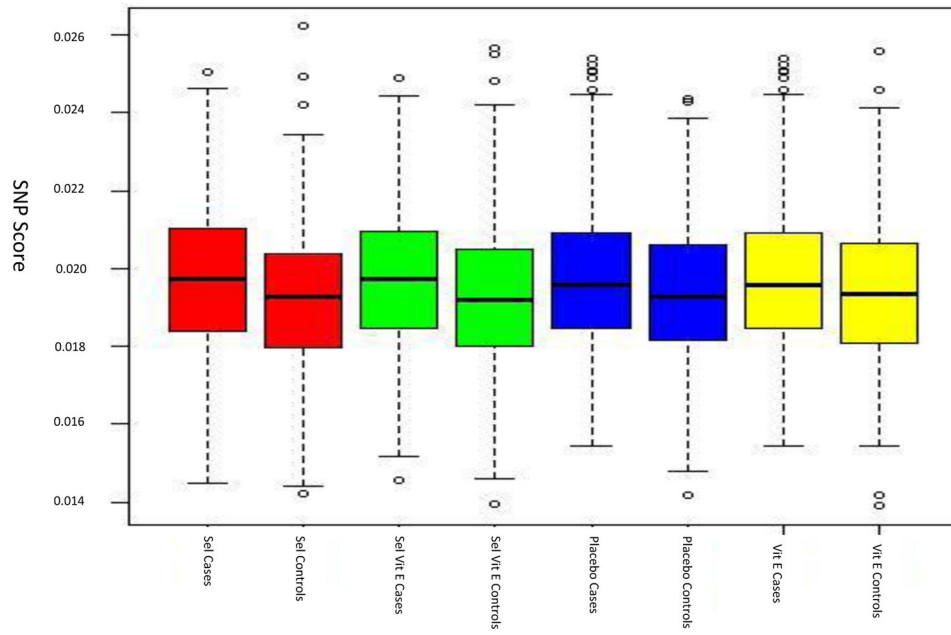


Figure 5 - Boxplot showing the weighted polygenic risk score which is higher in cases than controls and is statistically significant ($P < 0.05$) in the SELECT trial.

Table 1 –**Patient Characteristics (FHx – family history)**

	PCPT			SELECT			
	Finasteride	Placebo		Placebo	Selenium	Vitamin E	Selenium & Vitamin E
Numbers							
Total	833	1256		845	816	908	829
Cases	428	616		352	330	393	346
Control	405	640		493	486	515	483
Age							
Mean age of entry trial (SD)	64.4 (5.7)	63.6 (5.6)		63.9 (6.0)	63.8 (6.0)	64.0 (6.1)	63.7 (6.2)
Mean age of Ca Dx (SD)	69.9 (5.6)	69.7 (5.7)		67.1(5.8)	63.8 (6.0)	67.6 (6.1)	67.2 (6.2)
BMI (kg/m2)	27.5	27.4		NA	NA	NA	NA
FHx Positive	195	263		180	149	188	178
Gleason ≤ 6	266	470		197	182	221	202
Gleason ≥ 7	157	138		123	115	143	114

Table 2 –

Quality control for both studies

	PCPT	SELECT
Number of SNPs Genotyped	98	98
Total number of DNA Samples Received	2435	4789
European	2089	3512
>10% Genotype Missing for individual lost		
Cases	0	47
Controls	0	67
SNP lost with Less than 90% genotyping rate	5	9
Hardy-Weinberg Equilibrium SNPs lost (P<0.001)	0	0

Table 3 –

Showing the significant single SNP association for the development of prostate cancer and nearby genes in PCPT trial

Trial Arm	Chromosome	SNP	P Value	Odds Ratio	Nearby Genes
Placebo	3	rs7611694	0.04367	0.8473	<i>SIDT1</i>
Placebo	7	rs12155172	0.007637	1.292	<i>SP8</i>
Placebo	8	rs6983267	0.00198	0.78	<i>N/A</i>
Placebo	17	rs1859962	0.003917	1.26	<i>N/A</i>
Finasteride	2	rs7584330	0.03174	0.7799	<i>MLPH</i>
Finasteride	8	rs16901979	0.008784	2.28	<i>N/A</i>
Finasteride	17	rs4430796	9.64E-05	1.489	<i>HNF1B</i>
Finasteride	17	rs684232	0.03556	1.241	<i>VPS53, FAM57A</i>
Finasteride	17	rs1859962	0.01778	1.262	<i>N/A</i>
Finasteride	18	rs7241993	0.01109	0.7619	<i>SALL3</i>
Finasteride	22	rs5759167	0.01402	0.7852	<i>BIL/TLL1</i>

Table 4 –

Showing the significant single SNP association for the development of prostate cancer and nearby genes in SELECT trial

Trial arm	CHR	SNP	P	OR	Nearest Gene
Placebo	1	rs636291	0.003377	0.6929	<i>PEX14</i>
Placebo	2	rs3771570	0.02715	1.404	<i>FARP2</i>
Placebo	6	rs4713266	0.01558	0.7583	<i>TNS3</i>
Placebo	8	rs1512268	0.05006	1.252	<i>NKX3.1</i>
Placebo	10	rs2252004	0.04196	0.683	N/A
Placebo	11	rs11214775	0.02261	0.7473	<i>HTR3B</i>
Placebo	12	rs1270884	0.04148	0.7919	<i>TBX5</i>
Placebo	17	rs1859962	0.002107	1.422	N/A
Placebo	23	rs5919432	0.006584	1.712	<i>AR</i>
Selenium	2	rs12621278	0.0256	0.563	<i>ITGA6</i>
Selenium	5	rs2242652	0.05695	0.7398	<i>TERT</i>
Selenium	8	rs2928679	0.04767	1.268	<i>SLC25A37</i>
Selenium	10	rs10993994	0.01418	1.345	<i>MSMB</i>
Selenium	10	rs2252004	0.05719	1.465	N/A
Selenium	11	rs1938781	0.0172	0.699	<i>FAM111A</i>
Selenium	12	rs80130819	0.03519	0.6222	N/A
Selenium	17	rs1859962	0.04747	1.267	N/A
Selenium	20	rs6062509	0.01023	0.7144	<i>ZGPAT</i>
Vit E	3	rs2660753	0.00565	1.659	N/A
Vit E	4	rs7679673	0.01517	0.7443	<i>TET2</i>
Vit E	6	rs2273669	0.04909	1.383	<i>ARMC2, SESN1</i>
Vit E	8	rs1512268	0.04919	1.261	<i>NKX3.1</i>
Vit E	10	rs10993994	0.03971	1.28	<i>MSMB</i>
Vit E	11	rs11214775	0.001709	0.661	<i>HTR3B</i>
Vit E	11	rs1938781	0.02891	0.7233	<i>FAM111A</i>
Vit E	11	rs7127900	0.03343	1.365	N/A
Vit E	11	rs7931342	0.03694	0.7825	N/A
Vit E	17	rs138213197	0.05212	3.532	N/A
Sel + Vit E	2	rs12621278	0.01127	0.5422	<i>ITGA6</i>
Sel + Vit E	2	rs10187424	0.03605	1.264	<i>GGCX/VAMP8</i>
Sel + Vit E	2	rs11902236	0.0422	1.275	<i>TAF1B:GRHL1</i>
Sel + Vit E	8	rs1447295	0.0118	1.556	N/A
Sel + Vit E	8	rs620861	0.01228	0.7508	N/A
Sel + Vit E	8	rs12543663	0.04453	1.273	N/A
Sel + Vit E	9	rs1571801	0.02191	0.7455	<i>DAB21P (aggressive SNP)</i>
Sel + Vit E	11	rs11568818	0.01959	0.7711	<i>MMP7</i>
Sel + Vit E	14	rs8014671	0.05637	1.237	N/A
Sel + Vit E	17	rs1859962	0.05754	1.234	N/A

Trial arm	CHR	SNP	P	OR	Nearest Gene
Sel + Vit E	20	rs2427345	0.05815	0.8051	<i>GATAS, CABLES2</i>
Sel + Vit E	23	rs5945619	0.000263	1.808	<i>NUDT11</i>
Sel + Vit E	23	rs2405942	0.0367	0.6727	<i>SHROOM2</i>

Author Manuscript

Author Manuscript

Author Manuscript

Author Manuscript

Table 5 –

Showing the significant single SNP association of high and low grade Gleason score and nearby genes in PCPT and SELECT trial

Trial	CHR	SNP	P	OR	Nearest Gene
SELECT	1	rs1218582	0.2969	0.8991	N/A
SELECT	1	rs636291	0.000788	0.6965	<i>PEX14</i>
PCPT	2	rs721048	0.02	1.487	<i>EHBP1</i>
SELECT	2	rs12621278	0.009552	0.563	<i>ITGA6</i>
SELECT	2	rs3771570	0.02863	1.35	<i>FARP2</i>
PCPT	3	rs2055109	0.01	0.6528	N/A
SELECT	3	rs2660753	0.00946	1.505	N/A
SELECT	3	rs10934853	0.01466	1.316	N/A
PCPT	5	rs2853676	0.04	1.368	N/A
PCPT	5	rs13190087	0.01	2.398	N/A
SELECT	5	rs2242652	0.02988	0.7401	<i>TERT</i>
PCPT	6	rs2273669	0.02	1.535	<i>ARMC2, SESNI</i>
SELECT	6	rs2273669	0.03273	1.324	<i>ARMC2, SESNI</i>
SELECT	6	rs2273669	0.03308	1.355	<i>ARMC2, SESNI</i>
SELECT	7	rs12155172	0.0316	1.281	N/A
PCPT	8	rs620861	0.02	0.6856	N/A
PCPT	8	rs11135910	0.05	0.6722	<i>EBF2</i>
SELECT	8	rs12543663	0.04911	1.24	N/A
SELECT	8	rs1512268	0.02339	1.254	<i>NKX3.1</i>
SELECT	8	rs1447295	0.02999	1.387	<i>8q24</i>
SELECT	8	rs16901979	0.003904	2.109	N/A
PCPT	10	rs3850699	0.04	1.343	<i>TRIM8</i>
SELECT	10	rs10993994	0.008375	1.315	<i>MSMB</i>
SELECT	10	rs2252004	0.003301	0.6115	N/A
PCPT	11	rs7127900	0.04	0.6679	N/A
PCPT	11	rs1938781	0.04	1.386	<i>FAM111A</i>
SELECT	11	rs1938781	0.01914	0.7441	<i>FAM111A</i>
SELECT	11	rs11214775	0.000796	0.6819	<i>HTR3B</i>
SELECT	11	rs11568818	0.01808	0.7962	<i>MMP7</i>
PCPT	12	rs10875943	0.02	1.439	<i>TUBA1C/PRPH</i>
SELECT	12	rs1270884	0.04893	0.8222	<i>TBX5</i>
SELECT	12	rs80130819	0.01114	0.6233	N/A
SELECT	14	rs8014671	0.03711	1.224	N/A
SELECT	17	rs1859962	0.004161	1.328	N/A
SELECT	17	rs138213197	0.005718	NA	N/A
SELECT	17	rs1859962	0.009122	1.3	N/A
SELECT	20	rs6062509	0.001863	0.71	<i>ZGPAT</i>
SELECT	22	rs5759167	0.02545	0.8011	N/A

Trial	CHR	SNP	P	OR	Nearest Gene
SELECT	22	rs9623117	0.03146	0.7666	N/A
SELECT	23	rs5919432	0.003371	1.662	AR
SELECT	23	rs5945619	3.75E-05	1.784	NUDT11
SELECT	23	rs2405942	0.01501	0.6641	SHROOM2

Author Manuscript

Author Manuscript

Author Manuscript

Author Manuscript

Table 6 –

Polygenic risk score analyses results. P value corresponding to beta estimate. Weighted polygenic risk score weighted by log odds ratio

	Beta	P
Unweighted Polygenic Risk Score PCPT		
SNP Score Category 2	0.45	0.001
SNP Score Category 3	0.67	3E-06
SNP Score Category 4	1.01	8E-15
Drug	0.09	0.33
Weighted Polygenic Risk Score PCPT		
SNP Score Category 2	0.4	0.01
SNP Score Category 3	0.57	0.00002
SNP Score Category 4	0.79	1E-08
Drug	0.1	0.29
Unweighted Polygenic Risk Score SELECT		
SNP Score Category 2	0.13	0.6
SNP Score Category 3	0.08	0.68
SNP Score Category 4	0.2	0.31
Selenium	0.21	0.28
Vitamin E	0.13	0.5
Selenium & Vitamin E	0.08	0.7
Weighted Polygenic Risk Score SELECT		
SNP Score Category 2	0.23	0.04
SNP Score Category 3	0.23	0.04
SNP Score Category 4	0.52	5E-08
Selenium	-0.04	0.66
Vitamin E	0.07	0.48
Selenium & Vitamin E	0	0.65

Table 7 –

Showing weighted polygenic risk score, trial drug and family history predicting Gleason Score

Weighted SNP score to predict Gleason Cat (HG/LG) using Drug and Family History	Beta	P ¹
PCPT		
SNP Score Category 2	0.44	0.11
SNP Score Category 3	0.41	0.1
SNP Score Category 4	0.14	0.57
Drug	0.69	0.0000007
Family History	-0.02	0.9
SELECT		
SNP Score Category 2	-0.56	0.003
SNP Score Category 3	-0.17	0.33
SNP Score Category 4	-0.28	0.08
Selenium	0	1
Vitamin E	0.03	0.84
Selenium & Vitamin E	-0.09	0.6
Family History	-0.15	0.23