

Use of Pediatric Injectable Medicines Guidelines and Associated Medication Administration Errors: A Human Reliability Analysis

Annals of Pharmacotherapy

1–8

© The Author(s) 2021




Article reuse guidelines:

sagepub.com/journals-permissions

DOI: 10.1177/1060028021999647

journals.sagepub.com/home/aop

Matthew D. Jones, PhD¹ , Jonathan Clarke, PhD²,
Calandra Feather, BSc (Hons)², Bryony Dean Franklin, PhD^{3,4},
Ruchi Sinha, MBChB, MRCPCH⁴, Ian Maconochie, PhD⁴,
Ara Darzi, MD², and Nicholas Appelbaum, PhD²

Abstract

Background: In a recent human reliability analysis (HRA) of simulated pediatric resuscitations, ineffective retrieval of preparation and administration instructions from online injectable medicines guidelines was a key factor contributing to medication administration errors (MAEs). **Objective:** The aim of the present study was to use a specific HRA to understand where intravenous medicines guidelines are vulnerable to misinterpretation, focusing on deviations from expected practice (*discrepancies*) that contributed to large-magnitude and/or clinically significant MAEs. **Methods:** Video recordings from the original study were reanalyzed to identify discrepancies in the steps required to find and extract information from the NHS Injectable Medicines Guide (IMG) website. These data were combined with MAE data from the same original study. **Results:** In total, 44 discrepancies during use of the IMG were observed across 180 medication administrations. Of these discrepancies, 21 (48%) were associated with an MAE, 16 of which (36% of 44 discrepancies) made a major contribution to that error. There were more discrepancies (31 in total, 70%) during the steps required to access the correct drug webpage than there were in the steps required to read this information (13 in total, 30%). Discrepancies when using injectable medicines guidelines made a major contribution to 6 (27%) of 22 clinically significant and 4 (15%) of 27 large-magnitude MAEs. **Conclusion and Relevance:** Discrepancies during the use of an online injectable medicines guideline were often associated with subsequent MAEs, including those with potentially significant consequences. This highlights the need to test the usability of guidelines before clinical use.

Keywords

administration, intravenous, guidelines as topic, medication errors, nurses, patient safety, practice guidelines as topic

Introduction

Medication errors are a leading cause of avoidable patient harm and cost an estimated \$42 billion per annum worldwide.¹ The administration of intravenous medicines is associated with a higher frequency of medication administration errors (MAEs) than medicines given by any other route. Up to 48% of all injectable doses may be erroneous in some way.^{2,3} Each year in the United States, there are an estimated 1.2 million hospitalizations affected by an injectable medicine error, increasing costs by \$2.7 to \$5.1 billion.⁴ One of many causes of such errors is difficulty finding relevant, unambiguous information in guidelines.^{5–7} Little is known, however, about the specific challenges that occur during the process of accessing and reading a guideline or why health professionals encounter such difficulties. This

knowledge would be invaluable for designing safer guidelines.

A recent study examined medication errors during simulated pediatric resuscitations, using human reliability analysis (HRA) to describe how these errors were linked to discrepancies in individual process steps.⁸ As is usual in the United Kingdom, intravenous medicines were prepared at

¹University of Bath, Somerset, UK

²Imperial College London, UK

³University College London, UK

⁴Imperial College Healthcare NHS Trust, London, UK

Corresponding Author:

Matthew D. Jones, Department of Pharmacy and Pharmacology, University of Bath, Claverton Down, Bath, Somerset BA2 7AY, UK.
Email: M.D.Jones@bath.ac.uk

the simulated patient's bedside. Ineffective retrieval of preparation and administration instructions from the NHS Injectable Medicines Guide (IMG) was the step that most often made a major contribution to medication errors. This is a website that provides specific guidance on the preparation and administration of more than 350 intravenous medicines and is accessed approximately 3 million times per annum.⁹ Three other studies have identified the IMG as potentially difficult to use.¹⁰⁻¹² However, this previous research cannot be used to recommend improvements to guideline design because it did not analyze the precise steps in the process of accessing and reading the guidelines that were linked to medication errors.

The aim of the present study, therefore, was to reanalyze video recordings from the previous HRA study⁸ to identify the steps in the process of using the IMG that contributed to medication errors. HRA undertakes analysis of system vulnerabilities at a task level^{13,14} and was also adopted for the present study but with a detailed focus on the process of accessing and reading the IMG, rather than the entire resuscitation. The incidence, nature, and severity of the medication errors were identified in the previous study, so our specific objective here was to use HRA to understand the contributory role played by discrepancies in the guideline use process, with a focus on those discrepancies contributing to large-magnitude and/or clinically significant errors. Although the previous study considered both prescribing and administration errors,⁸ because the present study focuses on the use of medicines administration guidelines, we considered only MAEs.

Methods

Previous Study

The previous pediatric resuscitation simulation study was a prospective, observational study conducted in a medical simulation facility within a large academic hospital.⁸ Resuscitation teams consisting of a senior pediatric doctor (registrar or above), a junior doctor, a senior pediatric nurse (UK salary band 6 or above), and a junior pediatric nurse were randomized to complete 1 of 2 standardized scenarios: prolonged status epilepticus in an 8-month old (8 teams) or presumed meningococcal sepsis in a 10-month old (7 teams). During these 15 simulations completed by 15 different teams, 180 intravenous medicines were prepared and administered to a mannequin by the nurses. Participants had access to printed information sources, hospital information technology systems, and the IMG website.⁹ The simulations were recorded by 7 high-definition video cameras, including head-mounted cameras worn by both nurses.

The main outcome measures of the previous study were medication errors and discrepancies. Medication errors were defined as an overall error with respect to a particular

medication's administration as a whole, after having been administered to the patient. Greater than 25% deviation from either the recommended dosing range or rate of administration was considered a "large magnitude medication error." The potential severity of every error was assessed using the Dean and Barber tool.^{2,3,15} Errors with a mean severity score >3 were considered "clinically significant errors." Expected practice was defined using a hierarchical task analysis (HTA), and a discrepancy was defined as an observed deviation from this expectation.

The previous study was performed in line with the principles of the Declaration of Helsinki. Approval was granted by the hospital concerned and the United Kingdom's Health Research Authority. Participants gave written, informed consent before taking part.

Hierarchical Task Analysis

A new HTA was developed to describe the process of retrieving from the IMG all the information required for the preparation and administration of a pediatric intravenous medicine (Figure 1). The HTA was initially developed by a research pharmacist (MDJ) with experience of hospital pharmacy, the IMG, and injectable medicine safety research. It was subsequently assessed for face validity by 2 independent specialist pediatric pharmacists, an experienced pediatric nurse (CF), and a doctor (NA).

The IMG website is divided into pediatric and adult sections accessed via separate menu webpages. Guidance for different medicines is presented on individual webpages selected from either menu. The HTA (Figure 1), therefore, describes 2 major stages: finding the correct drug guide to use (steps 1.1-1.4) and subsequently reading that guide to extract the required information in any order (steps 2.1-2.7). At the time of data collection, the IMG did not contain pediatric guides for every medicine. For medicines without a specific pediatric guide, information regarding administration to children was presented within an "all age" guide, accessed via the adult menu page. This process is reflected in the "find drug guide" steps (1.1-1.4) of the HTA.

Video Analysis

Video recordings of each of the 42 discrepancies that occurred during the "Check intravenous administration guidance" task of the original study⁸ were reanalyzed by a research pharmacist (MDJ). Observed deviations from expected practice at the level of an individual task (as described by the present study HTA; Figure 1) were defined as discrepancies and coded using a subset of error modes drawn from a generic human error taxonomy.⁸ When a participant sought but did not find relevant sections available within the IMG, the relevant process step was assigned the error mode "information not obtained" (error mode R1).

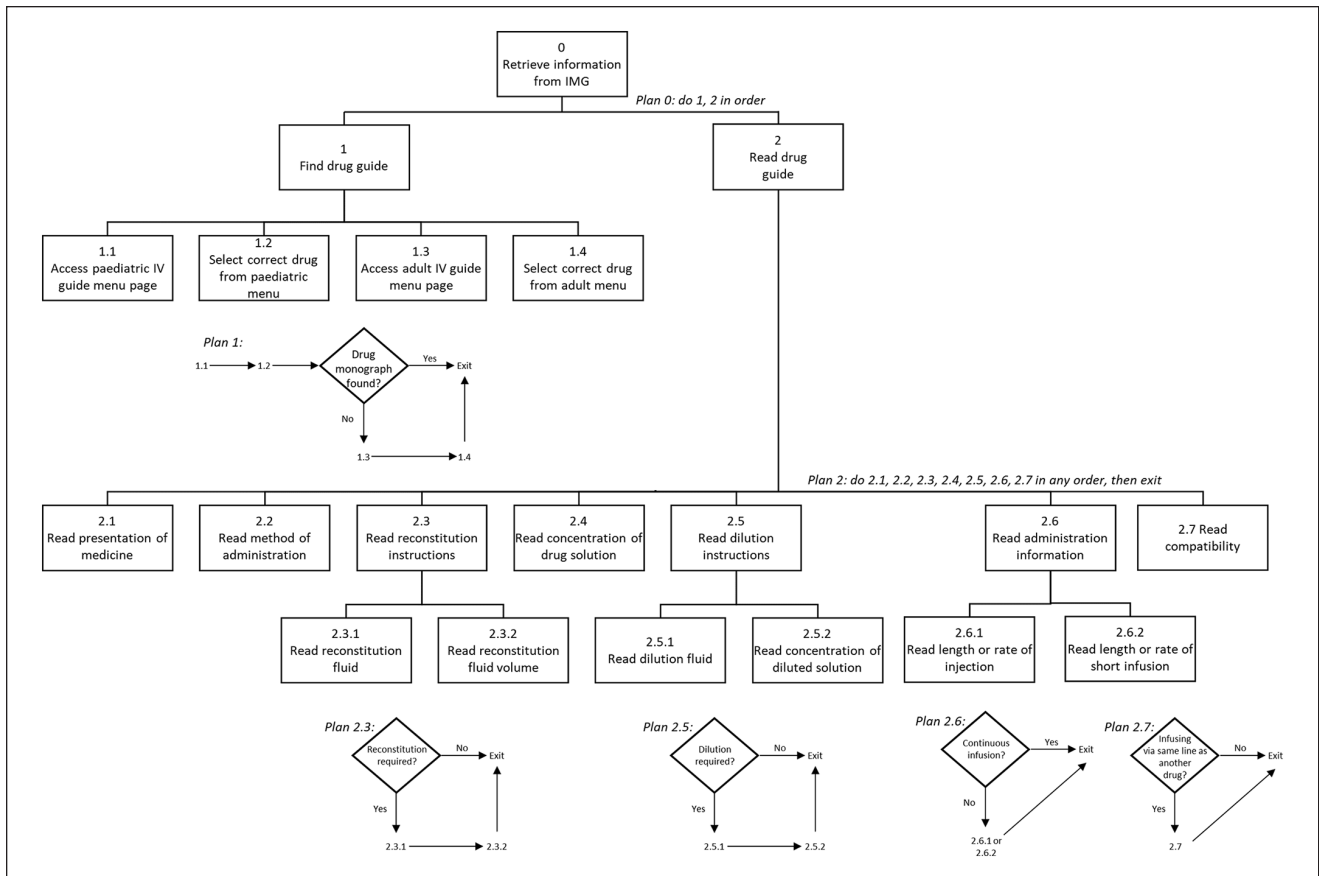


Figure 1. The hierarchical task analysis describing the process of retrieving all the information required for the preparation and administration of a pediatric intravenous medicine from the NHS IMG website. Abbreviations: IMG, Injectable Medicines Guide; IV, intravenous.

When a participant found relevant sections within the IMG but subsequently extracted incorrect information from them, the relevant process step was assigned the error mode “wrong information obtained” (error mode R2). When a participant found relevant sections within the IMG but subsequently correctly extracted only some of the necessary information, the relevant process step was assigned the error mode “information retrieval incomplete” (error mode R3). When a participant did not attempt to use the IMG to obtain necessary information, the relevant process step was assigned the error mode “information not sought” (error mode R4). Where a single process step took longer than 1 minute to complete, it was assigned the error mode “operation took too long” (error mode A1). To capture the “root cause” of system vulnerabilities, an action that was performed correctly but that perpetuated a discrepancy that had already been made earlier was not classed as a discrepancy.

Each discrepancy was also classified according to its contribution to a subsequent MAE using the following categories: “no contribution” (the discrepancy did not contribute to a MAE), “minor contribution” (some contribution

made to a MAE), and “major contribution” (the task discrepancy led directly to an MAE).

To determine the interobserver reliability, we agreed in advance that a minimum of 10% of videos should be analyzed in duplicate. Therefore, 5 videos (12%) were reanalyzed by an experienced pediatric nurse (CF), who considered observed discrepancies and assigned error modes and subsequent MAE contributions.

Data Analysis

Counts of discrepancies were grouped by HTA task, error mode, and their contribution to MAEs. Discrepancy rates were calculated as percentages for each of the 3 medication error contribution categories (“no contribution,” “minor contribution,” and “major contribution”), with the number of observed discrepancies for each unique combination of HTA step and error mode as the denominator. The percentage of major contribution discrepancies contributing to a clinically significant and/or a large-magnitude MAE was also calculated.

Results

The characteristics of the 60 participants in the 15 simulations are summarized in the original publication.⁸ Medicines were solely prepared and administered by the 30 nurses. Of these participants, 29 (97%) were female and 21 (70%) had fewer than 5 years' experience of both general and pediatric practice.

For the 5 medication administrations that were reanalyzed by 2 researchers, there was perfect agreement for discrepancies, errors modes, and contribution to MAEs.

In total, 44 HTA step discrepancies in 33 doses were observed during use of the IMG. Of these discrepancies, 21 (48%) were linked to an MAE (identified in the original study⁸), with 16 (36%) making a major contribution to an MAE. Table 1 summarizes the discrepancy count for each unique HTA step and error mode combination (Figure 1). There were more discrepancies (31 in total, 70%) in the steps required to find the correct drug guide (steps 1.1-1.4) than there were in the steps required to read a drug guide (steps 2.1-2.7; 13 in total, 30%).

Accessing the pediatric intravenous guide (step 1.1) was the step with the most discrepancies ($n = 19$) and the step most likely to contribute to MAEs, with 10 major contributions, including 4 that were clinically significant. These included 11 discrepancies resulting from participants using the adult IMG when a pediatric version was available. These 11 discrepancies were distributed between only 5 teams (2 teams with 1 discrepancy each, and 3 teams with 2, 3, and 4 discrepancies, respectively). Teams with multiple discrepancies of this type continued to use the adult IMG for medicines subsequent to the first discrepancy because use of the "back" button of their web browser meant the next drug guide selection was also made from the adult menu. Across all steps, the most common error modes were "information not sought" (R4, 19 discrepancies, 43%), "information not obtained" (R1, 12 discrepancies, 27%), and "operation took too long" (A1, 9 discrepancies, 20%).

Overall, there were 6 discrepancies that made a major contribution to a clinically significant MAE and 4 that made a major contribution to a large-magnitude MAE (Table 1). These are described in more detail in Table 2. This is equivalent to 27% and 15% of all clinically significant and large-magnitude medication errors observed in the original study, respectively. All discrepancies making a major contribution to a large-magnitude administration error arose at the step of accessing the pediatric intravenous guide (step 1.1). A further 2 clinically significant administration errors arose from misreading the method of administration of a medication (step 2.2).

Discussion

This study has identified the specific steps in the process of using the IMG that contributed to MAEs during simulated

pediatric resuscitations. Process discrepancies were most frequent in the steps required to find the correct drug guide but were also seen during the extraction of correct and complete information from individual guides. Many of these discrepancies were important because more than one-third made a major contribution to a subsequent MAE and the process of retrieving information from the IMG made a major contribution to more than a quarter of clinically significant errors observed in the simulation study. There were 3 process discrepancies that made a major contribution to clinically significant and/or large-magnitude MAEs: relying on memory rather than checking the IMG for information, using an adult guide instead of a pediatric guide, and misinterpreting method of administration information (Table 2). The design of the IMG also meant that a "use of an adult guide" discrepancy was likely to lead to subsequent similar administration errors. In addition, 9 discrepancies (20%) were coded with error mode A1: "operation took too long." This suggests that the IMG might be less suitable for use in time-critical scenarios, although this did not significantly contribute to MAEs in this study. Since the present study was completed, the design of the IMG has been revised to reduce the likelihood of similar discrepancies occurring.

A previous study applied user testing to the adult IMG and found that nurses had similar difficulties to those reported in the present study in extracting correct and complete information.¹² A subsequent ward-based simulation found that a new version of the IMG, revised via a user testing process, resulted in approximately 2.5 times more medication administrations being free of guideline-related errors.¹⁶ Nurses were also able to prepare intravenous medicines more quickly when using the user-tested guidelines. However, these studies did not consider use of the pediatric IMG nor the process of finding the correct drug guide, which most frequently contributed to MAEs in the present study. Nonetheless, the reduction in MAEs seen after application of a systematic approach to obtain and respond to feedback from users suggests that usability testing¹⁷ of the IMG website might be successful in preventing some of the errors observed. In addition, the results of this study provide another example of how difficulty in finding relevant, unambiguous information in any guideline can contribute to medication errors⁵⁻⁷ and to patient safety incidents more generally.^{18,19} By using HRA, the present study provides more information on which of the steps in using a particular guideline are associated with MAEs. More broadly, these findings fit with the wider literature on the use of electronic systems in health care, which shows that usability problems can contribute to medication errors and patient harm.²⁰⁻²⁴

Among the strengths of the present study are the use of HRA to link specific discrepancies to subsequent MAEs and the validation of the video analysis by a second researcher. However, several limitations are shared with the original study, including the use of a simulated environment at a

Table 1. Number, Frequency, and Relationship of Discrepancies and Error Modes to Resultant Administration Errors With Subanalysis of Discrepancies With a Major Contribution to Clinically Significant and Large-Magnitude Administration Errors.

| HTA step at which discrepancy occurred | Error mode ^a | Description of discrepancy | Total discrepancies (n) | Relationship to resultant medication administration errors | | | |
|------------------------------------------------------|-------------------------|------------------------------------------------------------------------------|-------------------------|------------------------------------------------------------|---------------------------------------|-----------------------------------------------|-----------------------------------------------------------------------------|
| | | | | No contribution n (%) ^b | Minor contribution n (%) ^b | Major contribution, total, n (%) ^b | Discrepancies that resulted in large-magnitude errors, n (%) ^{b,c} |
| Overall | | | 44 | 23 (52%) | 5 (11%) | 16 (36%) | 4 (9%) |
| Find drug guide | | | 31 | 17 (55%) | 4 (13%) | 10 (32%) | 4 (13%) |
| I.1: Access pediatric IV guide menu page | R1 | Used adult guide when pediatric guide available | 11 | 7 (64%) | — | 4 (36%) | 3 (27%) |
| I.2: Select correct drug from pediatric menu | R4 | Did not check IMG for guidance | 8 | 2 (25%) | — | 6 (75%) | 1 (13%) |
| I.3: Access adult IV guide menu page | A1 | > 1 minute searching for correct guide | 4 | 3 (75%) | 1 (25%) | — | — |
| I.4: Select correct drug from adult menu | R4 | Did not look for an all-age guide after finding no pediatric guide available | 7 | 4 (57%) | 3 (43%) | — | — |
| Read drug guide | | | 1 | 1 (100%) | — | — | — |
| 2.2: Read method of administration | R1 | Failed to open all-age guide | 1 | 1 (100%) | — | — | — |
| 2.2.2: Read reconstitution fluid volume | | | 13 | 6 (46%) | 1 (8%) | 6 (46%) | 2 (15%) |
| 2.2: Read method of administration | R2 | Misread method as inject aciclovir undiluted | 1 | — | — | 1 (100%) | 1 (100%) |
| | R3 | Did not read that diluted phenytoin is “preferred” | 1 | — | — | 1 (100%) | — |
| | R4 | Information not sought | 1 | — | — | 1 (100%) | — |
| | R4 | Information not sought | 1 | — | — | 1 (100%) | — |
| 2.2.2: Read concentration of drug solution | | | 1 | 1 (100%) | — | — | — |
| 2.4: Read concentration of drug solution | A1 | > 1 minute reading time | 1 | 1 (100%) | — | — | — |
| | R4 | Information not sought | 1 | — | — | 1 (100%) | — |
| 2.5.2: Read concentration of diluted solution | | | 2 | 2 (100%) | — | — | — |
| 2.5.2: Read concentration of diluted solution | A1 | > 1 minute reading time | 2 | 2 (100%) | — | — | — |
| | R3 | Did not notice it was “maximum” dopamine concentration to dilute to | 1 | — | — | 1 (100%) | — |
| | R4 | Information not sought | 1 | — | 1 (100%) | — | — |
| 2.6.1: Read length or rate of injection | | | 1 | 1 (100%) | — | — | — |
| 2.6.2: Read length or rate of short infusion | A1 | > 1 minute reading time | 1 | 1 (100%) | — | — | — |
| | R2 | Read neonatal ceftriaxone infusion time instead of infant time | 1 | 1 (100%) | — | — | — |
| 2.7: Read compatibility | | | 1 | 1 (100%) | — | — | — |
| | A1 | > 1 minute reading time | 1 | 1 (100%) | — | — | — |

Abbreviations: HTA, hierarchical task analysis; IMG, Injectable Medicines Guide; IV, intravenous.

^aError mode codes: A1, operation took too long; R1, information not obtained; R2, wrong information obtained; R3, information retrieval incomplete; R4, information not sought.

^bThe denominator for percentages is the total number of discrepancies in each row.

^cNumber and percentage of clinically significant administration errors (severity score > 3), with major contributory discrepancies made at each specific step, of a total of 22 clinically significant errors identified in the original study.⁸

^dNumber and percentage of large-magnitude administration errors (deviation from recommended dosing range or deviation from recommended dosing rate > 25%), with major contributory discrepancies made at each specific step, of a total of 27 large-magnitude errors identified in the original study.⁹

Bold faces represent totals and sub-totals of the figures which follow in subsequent rows.

Table 2. Description of the Discrepancies That Made a Major Contribution to a Clinically Significant or Large-Magnitude Medication Administration Error.

| Medicine | HTA step at which discrepancy occurred ^a | Error mode ^b | Mean severity score ^c | Deviation from recommended dosing range ^c | Deviation from recommended administration rate ^c | Description of related medication administration error | Description of contributory IMG-related discrepancy |
|------------------|-----------------------------------------------------|-------------------------|----------------------------------|------------------------------------------------------|-------------------------------------------------------------|-----------------------------------------------------------------------------------------------|----------------------------------------------------------------------------------------------------------------------------------------------------------------------------------------------------------------------------------------------------------------------------------------------------------------------|
| Calcium chloride | 1.1 | R1 | 8.6 | 789% | 67% | 8.8 mmol given undiluted over 3 minutes rather than 0.99 mmol given diluted over 5-10 minutes | Used the adult IMG, which suggested administration of undiluted injection over 5 minutes. Pediatric IMG would have suggested diluting the injection and giving over 5-10 minutes. (Incorrect dose was based on misreading of the BNF) |
| Phenytoin | 1.1 | R1 | 7.2 | — | 300% | Correct dose given undiluted at 4 mg/kg/min rather than diluted at 1 mg/kg/min | Used the adult IMG, which did not state that dilution was preferred and gave a maximum infusion rate of 50 mg/min. Pediatric IMG would have stated that dilution was preferred and gave a maximum infusion rate of 1 mg/kg/min |
| Phenytoin | 1.1 | R1 | 6.9 | — | -99% | Correct dose given too slowly (0.0078 mg/kg/min rather than 1 mg/kg/min) | Used the adult IMG, which suggested administration rate of 25 mg/min in "some patients." Decided to give at 25 mg/min but made a calculation error when setting rate on pump. Pediatric IMG would have suggested a maximum infusion rate of 1 mg/kg/min |
| Lorazepam | 1.1 | R4 | 5.4 | 300% | High | 3.2 mg given over a few seconds rather than 0.8 mg over 3-5 minutes | Did not use the IMG, which would have stated that dose should be given over 3-5 minutes |
| Aciclovir | 2.2 | R2 | 5.7 | — | High | Correct dose given undiluted over a few seconds, rather than diluted over 1 hour | Misinterpreted the "Method of administration" section as saying that aciclovir should be given undiluted by short injection, possibly as a result of misreading "Do not administer by IV injection." (Was also using the adult IMG, but pediatric IMG had the same wording, so this did not contribute to the error) |
| Phenytoin | 2.2 | R3 | 4.4 | — | — | Correct dose and rate given undiluted rather than diluted | Did not notice that the "Method of administration" section in the pediatric IMG stated that diluted infusion is preferred |

Abbreviations: BNF, British National Formulary; HTA, hierarchical task analysis; IMG, Injectable Medicines Guide; IV, intravenous.

^a1.1 = "Access pediatric IV guide menu page"; 2.2 = "Read method of administration."

^bError mode codes: R1 = information not obtained; R2 = wrong information obtained; R3 = information retrieval incomplete; R4 = information not sought.

^cDerived from the original study.⁹

single site with unblinded participants.⁸ Participation in a simulation may have changed nurses' behavior compared with actual practice, thus reducing external validity. However, this effect may also exist in observational studies of clinical practice because of the potential effects of an observer and participation in a research study.²⁵ In addition, although each simulation team included 1 senior nurse (defined by an appropriate UK salary band), the professional experience of the participants was less than might be expected, with 70% having fewer than 5 years' experience. There are also more specific limitations. The use of the IMG was only observed during pediatric resuscitation scenarios, so the findings may have limited generalizability to less urgent situations involving medicines that are more commonly used or less complex to prepare. In particular, discrepancies involving selection of a drug guide for the wrong patient age group are less likely to be seen when the IMG is used by nurses caring for adults.

Conclusion and Relevance

Process discrepancies in the use of an online injectable medicines guideline were often associated with subsequent MAEs, including those with potentially significant consequences. The most error-prone steps were those related to finding the guideline for the correct age group, but discrepancies were also seen during the subsequent extraction of correct and complete information from the guidelines.

These findings suggest that work to prevent MAEs related to the IMG should focus on encouraging nurses to use the IMG to find guidelines on intravenous medicines, ensuring that adult guides are not used when administering medicines to children (and that this discrepancy is not perpetuated by default), and improving the clarity of the method of administration guidance. Refinements to the design of the IMG (some of which have already been implemented) are likely to bring about robust improvements, but raising staff awareness of these common discrepancies may also help while design changes are implemented. In the longer term, the integration of the IMG into electronic prescribing and medicines administration systems could remove the need for staff to search for the correct information, thus removing the most problematic process steps observed in this study.

More widely, these findings and those of other studies suggest that the authors and designers of guidelines and other electronic tools should consider the usability of their products (including both navigation and interpretation) as well as their accuracy and comprehensiveness.^{12,16} Tools such as user testing may be helpful in achieving this aim. Quantitative HRA has been shown to be a valuable method by which to measure the vulnerability of clinical guidelines to misuse. Future research should examine the use of guidelines for other clinical applications and in other clinical areas to determine whether certain types of discrepancy are common between different guideline types and intended audiences. It should

also seek to clarify the contribution that tools such as user testing can make to the prevention of medication errors related to guidelines and other electronic systems.

Authors' Note

This article presents independent research funded by the National Institute for Health Research (NIHR), the NIHR Imperial Patient Safety Translational Research Centre, and the NIHR Health Protection Research Unit in Healthcare Associated Infections and Antimicrobial Resistance at Imperial College in partnership with Public Health England (PHE). The views expressed are those of the authors and not necessarily those of the NHS, the NIHR, PHE, or the Department of Health and Social Care.

There have been no prior postings or presentations of this work. The data created during the analysis carried out for this study are openly available from the University of Bath Research Data Archive at <https://doi.org/10.15125/BATH-00906>.

Acknowledgments

We would like to thank all clinical staff who participated in the simulations. We would also like to thank Carol Jackson and Amanda Skirrow (Royal United Hospitals Bath NHS Foundation Trust) for their invaluable assistance in checking the face validity of our hierarchical task analysis. It is our hope that the enthusiasm and extraordinary open-mindedness of our dedicated and deeply competent colleagues demonstrated in making this study possible will lead to safer systems and innovations in pediatric medication safety. This study was funded by the NIHR Imperial Patient Safety Translational Research Centre, with infrastructure support from the NIHR Imperial Biomedical Research Centre. Support was also received from the Resuscitation Council (UK). MDJ was funded by a National Institute for Health Research (NIHR) Transitional Research Fellowship for this research project.

Declaration of Conflicting Interests

The authors declared the following potential conflicts of interest with respect to the research, authorship, and/or publication of this article: The Helix Centre at Imperial College London is leading an effort in collaboration with the British National Formulary developing digital tools in an attempt to improve pediatric medication safety. MDJ has received an honorarium from B Braun Medical Ltd for speaking at an educational symposium on injectable medicines safety. NA has written 2 patents describing syringe labeling techniques and is a Director of Dosium Holdings Limited, a software company developing computerized decision support tools for medication safety. BDF has received honoraria from Pfizer for organizing and chairing 2 educational symposia on medication safety and recently supervised a PhD student who was part funded by Cerner, an electronic health record systems vendor. CF has received honoraria from Pfizer for speaking at a symposium. For the remaining authors, no conflicts of interest were declared.

Funding

The authors disclosed receipt of the following financial support for the research, authorship, and/or publication of this article: MDJ was funded by a National Institute for Health Research (NIHR), Transitional Research Fellowship for this research project (Grant

number TRF-2017-10-006). NA received funding from the Resuscitation Council (UK), which partially funded elements of the simulations and data extraction, with the majority of the funding received from the NIHR Imperial Patient Safety Translational Research Centre. Infrastructure support was provided by the NIHR Imperial Biomedical Research Centre (BRC). BDF is also supported by the NIHR Health Protection Research Unit in Healthcare Associated Infections and Antimicrobial Resistance at Imperial College London in partnership with Public Health England (PHE). The views expressed are those of the authors and not necessarily those of the NHS, PHE, the NIHR, or the Department of Health and Social Care.

ORCID iD

Matthew D. Jones  <https://orcid.org/0000-0002-2617-4098>

References

- World Health Organization. *Medication Without Harm—Global Patient Safety Challenge on Medication Safety*. World Health Organization; 2017.
- McLeod MC, Barber N, Franklin BD. Methodological variations and their effects on reported medication administration error rates. *BMJ Qual Saf*. 2013;22:278-289. doi:10.1136/bmjqs-2012-001330
- Keers RN, Williams SD, Cooke J, Ashcroft DM. Prevalence and nature of medication administration errors in health care settings: a systematic review of direct observational evidence. *Ann Pharmacother*. 2013;47:237-256. doi:10.1345/aph.1R147
- Lahue BJ, Pyenson B, Iwasaki K, Blumen HE, Forray S, Rothschild JM. National burden of preventable adverse drug events associated with inpatient injectable medications: healthcare and medical professional liability costs. *Am Health Drug Benefits*. 2012;5:1-10.
- Cousins DH, Sabatier B, Begue D, Schmitt C, Hoppe-Tichy T. Medication errors in intravenous drug preparation and administration: a multicentre audit in the UK, Germany and France. *Qual Saf Health Care*. 2005;14:190-195. doi:10.1136/qshc.2003.006676
- Taxis K, Barber N. Causes of intravenous medication errors: an ethnographic study. *Qual Saf Health Care*. 2003;12:343-347. doi:10.1136/qhc.12.5.343
- Keers RN, Williams SD, Cooke J, Ashcroft DM. Understanding the causes of intravenous medication administration errors in hospitals: a qualitative critical incident study. *BMJ Open*. 2015;5:e005948. doi:10.1136/bmjopen-2014-005948
- Appelbaum N, Clarke J, Feather C, et al. Medication errors during simulated paediatric resuscitations: a prospective, observational human reliability analysis. *BMJ Open*. 2019;9:e032686. doi:10.1136/bmjopen-2019-032686
- NHS Injectable Medicines Guide Group. NHS injectable medicines guide. Accessed February 17, 2021. https://www.ukmi.nhs.uk/filestore/img/img_presentations/golightlyp-img_2007-10.pdf
- Erskine D, Haylor J, Keeling S, Nicholls J. An assessment of the information provided to support healthcare staff to administer injectable medicines. Poster presented at: UK Medicines Information Practice Development Seminar; September 12, 2014; Birmingham, London, UK. <https://www.ukmi.nhs.uk/NonCMS/conferenceDB2014/Documents/postersandpresentations/19%20Erskin%20D%20Medusa%20poster%202014%20final.pdf>
- Skipp M, Templeman E. A survey to determine how the Medusa Injectable Medicines Guide is used within the South West. Poster presented at: UKMi Practice Development Seminar; September 2016; Birmingham, London, UK.
- Jones MD, Franklin BD, Watson MC, Raynor DK. User testing to improve retrieval and comprehension of information in guidelines to improve medicines safety. *J Patient Saf*. Published online June 19, 2020. doi:10.1097/PTS.0000000000000723
- Kirwan BAL. *A Guide to Task Analysis*. Taylor and Francis; 1992.
- National Offshore Petroleum Safety and Environmental Management Authority. *Human Reliability Analysis*. National Offshore Petroleum Safety and Environmental Management Authority; 2018.
- Dean BS, Barber ND. A validated, reliable method of scoring the severity of medication errors. *Am J Health Syst Pharm*. 1999;56:57-62. doi:10.1093/ajhp/56.1.57
- Jones MD, McGrogan A, Raynor DKT, Watson MW, Franklin BD. User-testing guidelines to improve the safety of intravenous medicines administration: a randomised in-situ simulation study. *BMJ Qual Saf*. 2021;30:17-26. doi:10.1136/bmjqs-2020-010884
- Bastien JMC. Usability testing: a review of some methodological and technical aspects of the method. *Int J Med Inform*. 2010;79:e18-e23. doi:10.1016/j.ijmedinf.2008.12.004
- Lawton R, McEachan RR, Giles SJ, Sirriyeh R, Watt IS, Wright J. Development of an evidence-based framework of factors contributing to patient safety incidents in hospital settings: a systematic review. *BMJ Qual Saf*. 2012;21:369-380. doi:10.1136/bmjqs-2011-000443
- Chang A, Schyve PM, Croteau RJ, O'Leary DS, Loeb JM. The JCAHO patient safety event taxonomy: a standardized terminology and classification schema for near misses and adverse events. *Int J Qual Health Care*. 2005;17:95-105. doi:10.1093/intqhc/mzi021
- Marcilly R, Ammenwerth E, Roehrer E, Pelayo S, Vasseur F, Beuscart-Zéphir MC. Usability flaws in medication alerting systems: impact on usage and work system. *Yearb Med Inform*. 2015;10:55-67. doi:10.15265/IY-2015-006
- Kushniruk AW, Triola MM, Borycki EM, Stein B, Kannry JL. Technology induced error and usability: the relationship between usability problems and prescription errors when using a handheld application. *Int J Med Inform*. 2005;74:519-526. doi:10.1016/j.ijmedinf.2005.01.003
- Koppel R, Metlay JP, Cohen A, et al. Role of computerized physician order entry systems in facilitating medication errors. *JAMA*. 2005;293:1197-1203.
- Howe JL, Adams KT, Hettinger AZ, Ratwani RM. Electronic health record usability issues and potential contribution to patient harm. *JAMA*. 2018;319:1276-1278.
- Ratwani RM, Savage E, Will A, et al. Identifying electronic health record usability and safety challenges in pediatric settings. *Health Aff (Millwood)*. 2018;37:1752-1759. doi:10.1377/hlthaff.2018.0699
- Lamé G, Dixon-Woods M. Using clinical simulation to study how to improve quality and safety in healthcare. *BMJ Simul Technol Enhanc Learn*. 2020;6:87-94. doi:10.1136/bmjstel-2018-000370