

ARTICLE TYPE

Original article

TITLE

Observational cohort study in older women with early breast cancer: use of radiation therapy and impact on health-related quality of life and mortality.

AUTHORS

Nicolò Matteo Luca Battisti¹, Matthew Q Hatton², Malcolm WR Reed³, Esther Herbert⁴, Jenna L Morgan⁵, Michael Bradburn⁴, Richard Simcock⁶, Stephen J Walters⁴, Karen A Collins⁷, Sue E Ward⁸, Geoffrey R Holmes⁸, Maria Burton⁷, Kate J Lifford⁹, Adrian Edwards⁹, Thompson G Robinson¹⁰, Charlene Martin⁵, Tim Chater⁴, Kirsty J Pemberton⁴, Alan Brennan⁸, Kwok Leung Cheung¹¹, Annaliza Todd⁵, Riccardo A Audisio¹², Juliet Wright³, Tracy Green¹³, Deirdre Revell¹³, Jacqui Gath¹³, Kieran Horgan¹⁴, Chris Holcombe¹⁵, Matthew C Winter¹⁶, Jay Naik¹⁷, Rishi Parmeshwar¹⁸, Margot A Gosney¹⁹, Alastair M Thompson²⁰, Lynda Wyld^{5#*}, Alistair Ring^{1#*} on behalf of the Bridging the Age Gap TMG.

* **These authors contributed equally to this work.**

Corresponding authors

Author affiliations

1. Department of Medicine, Breast Unit, The Royal Marsden Hospital NHS Foundation Trust, London, UK & Breast Cancer Research Division, The Institute of Cancer Research, London, UK
2. Weston Park Hospital, Sheffield Teaching Hospitals NHS Foundation Trust, UK.
3. Brighton and Sussex Medical School, Brighton, UK
4. Clinical Trials Research Unit, School for Health and Related Research, University of Sheffield, Sheffield, UK
5. Department of Oncology and Metabolism, University of Sheffield Medical School, Sheffield, UK
6. Brighton and Sussex University Hospitals NHS Trust, Brighton, UK
7. College of Health, Wellbeing and Life Sciences, Department of Allied Health Professions, Sheffield Hallam University, Sheffield, UK
8. Department of Health Economics and Decision Science, School for Health and Related Research (SchARR), University of Sheffield, Sheffield, UK

9. Division of Population Medicine, Cardiff University, Cardiff, UK
10. Department of Cardiovascular Sciences and NIHR Biomedical Research Centre, University of Leicester, Cardiovascular Research Centre, Leicester, UK
11. School of Medicine, University of Nottingham, Royal Derby Hospital, Derby, UK
12. University of Gothenberg, Sahlgrenska Universitetssjukhuset, Göteborg, Sweden
13. Yorkshire and Humber Consumer Research Panel, Sheffield, UK
14. Department of Breast Surgery, Bexley Cancer Centre, St James's University Hospital, Leeds, UK
15. Liverpool University Hospitals Foundation Trust, Liverpool, UK
16. Weston Park Hospital, Sheffield Teaching Hospitals NHS Foundation Trust, UK
17. Pinderfields Hospital, Mid Yorkshire NHS Foundation Trust, Wakefield, UK
18. University Hospitals of Morecambe Bay, Royal Lancashire Infirmary, Lancaster, Lancashire, UK
19. Royal Berkshire NHS Foundation Trust, Reading, UK.
20. Department of Surgery, Baylor College of Medicine, Houston, Texas, USA

Corresponding author

Professor Lynda Wyld

Department of Oncology and Metabolism, University of Sheffield Medical School, Beech Hill Road, Sheffield, S10 2RX. E mail: L.wyld@sheffield.ac.uk

ABSTRACT

Background

Radiotherapy reduces in-breast recurrence risk in early breast cancer (EBC) in older women. This benefit may be small and should be balanced against treatment effect and holistic patient assessment. This study described treatment patterns according to fitness and impact on health-related quality-of-life (HRQoL).

Methods

A multicentre, observational study of EBC patients aged ≥ 70 years, undergoing breast-conserving surgery (BCS) or mastectomy, was undertaken. Associations between radiotherapy use, surgery, clinico-pathological parameters, fitness based on geriatric parameters and treatment centre were determined. HRQoL was measured using the European Organisation for the Research and Treatment of Cancer (EORTC) questionnaires.

Results

In 2013-2018 2811 women in 56 UK study centres underwent surgery with a median follow-up of 52 months. On multivariable analysis, age and tumour risk predicted radiotherapy use. Among healthier patients (based on geriatric assessments) with high-risk tumours, 534/613 (87.1%) having BCS and 185/341 (54.2%) having mastectomy received radiotherapy. In less fit individuals with low-risk tumours undergoing BCS, 149/207 (72.0%) received radiotherapy. Radiotherapy effects on HRQoL domains, including breast symptoms and fatigue were seen, resolving by 18 months.

Conclusion

Radiotherapy use in EBC patients ≥ 70 years is affected by age and recurrence risk, whereas geriatric parameters have limited impact regardless of type of surgery. There was geographical variation in treatment, with some fit older women with high-risk tumours not receiving radiotherapy, and some older, low-risk, EBC patients receiving radiotherapy after BCS despite evidence of limited benefit. The impact on HRQoL is transient.

Keywords: Breast cancer, older, frailty, comorbidity, health-related quality of life, adjuvant radiotherapy.

Disclaimer

This paper presents independent research funded by the National Institute for Health Research (NIHR) under its Programme Grants for Applied Research Programme (Grant Reference Number RP-PG-1209-10071). The views expressed are those of the authors and not necessarily those of the NIHR or the Department of Health and Social Care.

Clinical Trial Registration: ISRCTN 46099296

MANUSCRIPT

INTRODUCTION

Half of breast cancer (BC) cases are diagnosed ≥ 65 years.[1] Nonetheless, outcomes are worse in older individuals[2, 3] who are underrepresented in trials.[4-6] In older patients outcomes may be influenced by competing risks, late presentation, and treatment variation:[7, 8] frailty data are crucial to aid decision-making.

Radiation therapy (RT) is generally well tolerated in older women after breast-conserving surgery (BCS) or mastectomy, although it may cause inconvenience.[9] Local recurrence rates after BCS are lower in older patients although RT benefits decline with age.[10, 11]

After BCS, the Cancer and Leukaemia Group B (CALGB) 9343 and PRIME-II trials showed that omitting RT in older women with small, node-negative, oestrogen receptor (ER)-positive tumours is associated with high loco-regional recurrence risk but no survival disadvantage.[12-14] An Early Breast Cancer Trialist's Collaborative Group (EBCTCG) meta-analysis found that whole breast RT reduced the 10-year absolute local recurrence risk and 15-year mortality, although the annual recurrence probability without RT inversely correlated with age.[15] However, survival effects may be less pronounced in older frail patients. RT omission may be appropriate in frail older women. Conversely, there is a risk of undertreating fit older patients at higher risk of recurrence and longer life expectancy.

Our study recruited older women with BC and included baseline geriatric assessments.[16-19] This analysis describes patients' characteristics undergoing RT and investigates the factors associated with RT use and impacts on health-related quality of life (HRQoL).

MATERIALS AND METHODS

Study design

The Bridging the Age Gap study was a multicentre, observational cohort study funded by the National Institute for Health Research (NIHR) under its Programme Grants for Applied Research Programme (grant reference number RP-PG-1209-10071). Ethics approval (IRAS: 12 LO 1808) and research governance approval were obtained. Patients were recruited from 56 centres in England and Wales (Supplementary Table 1). Women ≥ 70 years with operable invasive BC (TNM stages: T1-3 and operable T4b, N0-1, M0) were eligible. Staging investigations were performed if clinically indicated. Those unsuitable for surgery or with previous EBC within 5 years were not eligible.

Baseline data collection

Consenting patients were recruited at EBC diagnosis and could participate at three levels: full, partial (no requirement to complete HRQoL questionnaires) or by proxy (third-party data collection for those with significant cognitive impairment). Baseline tumour, surgical, RT and systemic therapy data were collected.

At baseline, patients underwent geriatric assessments: comorbidities (Charlson Comorbidity Index),^[20] nutrition (abridged Patient Generated Subjective Global Assessment),^[21, 22] functional status (Activities of Daily Living),^[23] advanced functional status (Instrumental Activities of Daily Living),^[24] cognitive capacity (Mini Mental State Examination),^[25] Eastern Cooperative Oncology Group Performance (ECOG) Status and medications.

HRQoL was assessed using the European Organisation for the Research and Treatment of Cancer (EORTC) HRQoL Questionnaires: EORTC-QLQ-C30;^[26] EORTC-QLQ-BR23;^[27] EORTC-QLQ-ELD15;^[28] EuroQol-5D-5L (EQ-5D-5L)^[29] (Supplementary Table 2).

Follow-up and outcomes

Patients were followed up at 6 weeks, 6, 12, 18 and 24 months after enrolment (at the time of diagnosis) and assessed for recurrence and HRQoL. Complications were categorised using the Common Terminology Criteria for Adverse Events (CTCAE v4.0).

Deaths were categorised as BC-related or other causes. Deaths were reviewed by the chief investigator blind to treatment decisions. Patients for whom the cause could not be established were excluded from cause-specific analyses.

Statistical methods

Analyses were performed in IBM SPSS version 24, R version 3.6.3[30] and Stata version 16.[31] A two-sided $p < 0.05$ was considered statistically significant.

The relationships between RT use, tumour and patient characteristics were evaluated using univariate and multivariable logistic regression for patients undergoing BCS or mastectomy.

Patients undergoing BCS were considered at high risk of recurrence if the tumour was ≥ 3 cm, ER-negative, human epidermal growth factor receptor 2 (HER2)-positive, node-positive, or grade 3 (Supplementary Table 3a).[13] Those undergoing mastectomy were considered high-risk if the tumour was T3, T4, or if ≥ 4 lymph nodes were involved (Supplementary Table 3a).[32, 33] Fitness was defined based on geriatric assessments in order to categorize women as fit, vulnerable or frail (Supplementary Table 3b). RT use was reported by recurrence risk and fitness.

Quality-of-life

The EORTC-QLQ questionnaires were scored according to the EORTC Scoring Manual (3rd Edition).[29] The pre-planned analysis was conducted separately for patients undergoing BCS or mastectomy. We also pre-planned to exclude from this analysis patients who received chemotherapy due to its significant effect on HRQoL.[18] The mean differences of the domain scores at each time point, adjusted for baseline, were calculated using linear regression models. The paper reports statistical significance. Clinically meaningful differences in global health status of 1, 7 and 13 for trivial, small and medium impacts respectively were inferred from the data.[34]

RESULTS

Between January 2013 and June 2018, 3456 women were recruited (Supplementary Table 1). This analysis included 2811 women undergoing surgery within 6 months of diagnosis (Figure 1).[35] Of these, 397 (14.1%) received chemotherapy. Overall, 2239/2354 (95.1%) ER-positive patients received endocrine therapy. Surgery was BCS in 1669 patients and mastectomy in 1087 patients (Table 1; Supplementary Tables 4-5).

Of the 1669 patients undergoing BCS, 1385 (83.0%) received RT within 12 months of surgery. Of 1383 patients undergoing BCS where the RT volume was known, 1372 (99.2%) received breast RT and 154 (11.2%) nodal RT (62 [4.5%] to axilla, 92 [6.7%] to supraclavicular fossa [SCF]). Internal mammary chain RT was not recorded. Of the 1087 patients undergoing a mastectomy, 341 (31.4%) received RT within 12 months. Of those 338 patients undergoing a mastectomy where the RT volume was known, 247 (73.1%) received chest wall RT and 221 (65.4%) nodal RT (68 [20.1%] to axilla, 153 [45.3%] to SCF) (Supplementary Table 4-6).

In the BCS cohort, younger patients with higher risk tumours (high grade, node positive) were more likely to receive RT (Table 2). In the mastectomy cohort, patients with larger tumours and higher nodal involvement were more likely to receive it.

In the BCS cohort, high-risk tumours were present in 820/1669 patients (49.1%); of these, 709/820 (86.5%) received RT compared with 676/849 (79.6%) of patients with low-risk tumours (Table 3a). Of those who were fit, 613 had high-risk tumours, and of these patients, 534/613 (87.1%) received RT (Table 3b). Of those 207 vulnerable individuals with low-risk tumours, 149/207 (72.0%) received RT.

In the mastectomy group, high-risk tumours were present in 479/1087 patients (44.1%) and 255/479 (53.2%) received RT compared with 86/608 (14.1%) of patients with non-high-risk tumours (Table 3c). Of those who were fit, 341 had high-risk tumours, and of these patients 185/341 (54.2%) received RT (Table 3d).

RT use varied from 17.6% to 90.9% between sites, although the number of patients recruited varied widely (Figure 3; Supplementary Table 7).

Among 2811 patients undergoing surgery, the HRQoL analysis was restricted to 1789/2811 (63.6%) who did not receive chemotherapy and who consented to full participation. Of the patients included, 1125/1789 (62.9%) underwent BCS and 628/1789 (35.1%) underwent a mastectomy. Out of those undergoing BCS, 927/1125 (82.4%) received RT; out of those undergoing a mastectomy, 177/628 (28.2%) received RT. Supplementary table 8 and figures 1-3 show HRQoL questionnaires completion rates.

Among those undergoing BCS, 1042/1125 patients (92.6%) completed some or all of the EORTC QLQ-BR23 questionnaire at baseline (Supplementary Table 8). No significant effects were observed at 6 weeks (after surgery but before RT). Patients undergoing RT reported worse breast symptoms at 6 months compared with those not receiving it (mean difference 6.27, 95% CI 3.34 to 9.19, $p < 0.001$) which persisted at 12 months (mean difference 3.89, 95% CI 1.13 to 6.64, $p = 0.006$) but not at 18 months or thereafter (Supplementary Table 9; Figure 2).

Among those undergoing a mastectomy, 588/628 patients (93.6%) completed some or all of the EORTC QLQ-BR23 questionnaire at baseline (Supplementary Table 8). No significant effects were seen at 6 weeks. At 6 months, a significant difference was observed in breast symptoms (5.52, 95% CI 2.67 to 8.37, $p < 0.001$). At 12 months, the effect persisted in breast symptoms (7.12, 95% CI 4.07 to 10.17, $p < 0.001$) and arm symptoms (6.34, 95% CI 2.99 to 9.70, $p < 0.001$). No differences were found at 18 months; at 24 months these were observed in arm symptoms (6.19, 95% CI 1.21 to 11.17, $p = 0.015$) (Supplementary Table 9; Figure 2).

1004/1125 patients (89.2%) undergoing BCS and 567/628 patients (90.3%) undergoing a mastectomy completed all questions included in the EORTC QLQ-C30 questionnaire at baseline (Supplementary Table 8). In the BCS cohort the RT effect on global health status was statistically (but not clinically) significant at 12 months (adjusted mean difference 3.19, 95% CI -0.08 to -6.29, $p = 0.044$) but not afterwards (Supplementary Tables 10-11; Supplementary Figure 4).

Patients undergoing mastectomy and given RT experienced global health decline at 6 weeks (-3.18, 95% CI -6.32 to -0.04, $p = 0.047$) which resolved subsequently (Supplementary Tables 10-11; Supplementary Figure 5). RT impacted fatigue at 6 months (adjusted mean difference 4.45, 95% CI 0.77 to 8.14, $p = 0.018$), 12 months (7.26, 95% CI 3.07 to 11.46, $p = 0.001$), 18 months (5.44, 95% CI 0.64 to 10.23, $p = 0.026$) and 24 months (6.56, 95% CI 1.76 to 11.37, $p = 0.008$), although this effect was clinically significant only at 12 months. No other effects were observed.

1002/1125 patients (89.1%) undergoing BCS and 559/628 patients (89.0%) undergoing a mastectomy completed all EORTC QLQ-ELD15 questions at baseline (Supplementary Table 8). In the BCS cohort, no significant impact was observed at 6 weeks in patients receiving RT compared with those not receiving it (usually pre-dating RT). At 6 months, RT impacted on illness burden (5.49, 95% CI 1.33 to 9.64, $p = 0.010$). At 12-18 months, no significant differences were observed; at 24 months, only on worries about others (-6.21, 95% CI -11.70 to -0.71, $p = 0.027$) (Supplementary Table 12; Supplementary Figure 4).

In the mastectomy cohort, illness burden was impacted in patients receiving RT versus not at 6 weeks (5.54, 95% CI 0.84 to 10.24, $p=0.021$), 6 months (9.66, 95% CI 4.67 to 14.66, $p<0.001$), 12 months (5.70, 95% CI 0.34 to 11.06, $p=0.037$), 18 months (8.19, 95% CI 2.64 to 13.74, $p=0.004$) and 24 months (8.34, 95% CI 1.25 to 15.43, $p=0.021$) (Supplementary Table 12; Supplementary Figure 5).

Baseline EQ-5D-5L score was calculated in 1060/1125 patients undergoing BCS (94.2%) and in 593/628 patients (94.4%) undergoing mastectomy. No significant differences were observed in the BCS cohort (Supplementary Table 12; Supplementary Figure 4).

In the mastectomy cohort, RT impacted the visual analogue scale at 18 months (adjusted mean difference -0.04, 95% CI -0.07 to -0.01, $p=0.029$) and 24 months (-0.05, 95% CI -0.08 to -0.02, $p=0.004$) (Supplementary Table 13; Supplementary Figure 5).

Supplementary Table 15 reports adverse events.

At a median of 52 months of follow-up, mortality data were available for 2757/2811 patients (98.1% of cohort) and cause of death for 2738/2811 (97.4% of cohort). Of 464/2757 (16.8%) deaths due to all causes, 193/464 (41.6%) were due to BC (Supplementary Table 16).

In patients undergoing BCS, mortality data were available for 1631/1669 (97.7%) and death cause data for 1624/1669 (97.3%). Of those receiving RT with mortality data available, 149/1354 (11.0%) died from any cause; among those receiving RT for whom a death cause was known, 51/1348 (3.8%) died from BC. For those not receiving RT with mortality data available, 48/277 (17.3%) died from any cause; among those receiving RT for whom a death cause was known, 9/276 (3.3%) died from BC.

In patients undergoing a mastectomy, mortality data were available for 1073/1087 (98.7%) and cause of death data for 1062/1087 (97.7%). Of those receiving RT with mortality data available, 93/336 (27.7%) died from any cause; among those receiving RT for whom a death cause was known, 63/332 (19.0%) died from BC. For those not receiving RT with mortality data available, 163/737 (22.1%) died from any cause; among those receiving RT for whom a death cause was known, 65/730 (8.9%) died from BC.

DISCUSSION

This analysis is the largest prospective cohort study describing RT use patterns and its impact on HRQoL, adverse events and mortality in older EBC patients, which integrates tumour characteristics and geriatric assessments data.

Life expectancy is increasing in Western countries[36] and older patients may experience disease relapse within their lifetime. Recurrence has symptomatic, adverse psychological and cost implications even without influencing survival.[11] Therefore, ensuring that older patients are adequately treated is a priority.

RT following BCS is standard-of-care for all EBC patients not at low risk. However, the definition of recurrence risk differs among national[32] and international guidelines[37, 38] and might explain RT uptake variations. Guidelines support omitting RT in low-risk patients ≥ 70 years assuming that they remain on endocrine therapy. However, compliance cannot be guaranteed when RT is omitted.[39] A meta-analysis did not document any differential benefit of post-mastectomy RT (PMRT) on locoregional recurrence in patients ≥ 60 years.[40]. The SUPREMO study excluded patients defined as high-risk in this analysis.[41] RT use after BCS or mastectomy declines with age[42] although it might relate to age, comorbidities, frailty, patient reluctance, or HRQoL impact.

In our analysis almost 13% of fit, high-risk patients undergoing BCS and more than 45% of fit, high-risk patients undergoing mastectomy did not receive RT. This may relate to patient, clinician and geographical factors. Recently 5 RT fractions over one week were found non-inferior to the previous standard for local control in patients with pT1-3 N0-1 tumours after BCS or mastectomy.[43] This may facilitate compliance with RT schedules.

In low-risk older patients, there is a low additional ipsilateral recurrence risk and no survival or breast preservation benefits without RT.[12, 13, 44, 45] In the PRIME II study, at 10 years 93.4% of mortality was not due to BC,[14] despite the rate of ipsilateral breast recurrence (1.3% with RT versus 4.1% with no RT) observed also in this specific age group. In our analysis, in the BCS cohort only one third of mortality was due to BC and RT might be safely omitted in low-risk older patients with a shorter life expectancy.[46] In our study, despite 849/1669 patients (50.9%) having a low risk of recurrence after BCS (some of whom were vulnerable/frail), 82.1% received RT. This suggests a degree of over-treatment which reflects the lack of concordance between national and international guidelines for the omission of RT after BCS and underlines the importance of considering risk profile and health status in decision-making.

Previous trials did not include fitness data which may impact life expectancy and mitigate local recurrence benefits. This study overcomes these limitations, by defining risk of recurrence and fitness, and still demonstrates a low impact of fitness considerations on RT uptake. Some clinicians overestimate the benefits of RT[47] although this does not always correspond with patients' perceived risks, lack of benefit and inconvenience.[48] Geriatric assessments are standard-of-care to evaluate fitness and guide anticancer treatment decisions in older adults with cancer based on international consensus.[49-51] This may also prove valuable for to radiotherapy decision-making and reduce treatment variation. Our findings demonstrate significant RT use variation as previously confirmed,[42, 52, 53] although caution is required in view of case-mix and geography bias.

This analysis demonstrates that RT has limited and temporary impact on toxicities and HRQoL, a meaningful endpoint due to the lack of survival benefits and increased toxicity risk on standard treatments in this population. The most significant impact occurred on breast symptoms, although this resolved by 18 months. Our findings are consistent with the PRIME study documenting no effect of RT on overall HRQoL in patients ≥ 65 years at low risk of recurrence after BCS[54] and with the SUPREMO trial showing an effect of PMRT on chest wall symptoms up to 2 years in patients undergoing a mastectomy.[34] The recent UK IMPORT LOW study demonstrated that partial breast RT could be employed with a reduction in breast effects and a non-inferior impact on local recurrence.[55] Trials investigating the role of biomarkers to select patients at low recurrence risk who may be spared RT, such as PRIMETIME (ISRCTN41579286), PRECISION (NCT02653755), LUMINA (NCT01791829), NATURAL (NCT03646955) and EUROPA (NCT04134598) will be highly relevant to older BC patients.

This analysis also has some limitations. The study criteria to define high-risk EBC did not include data on lymphovascular invasion, which is considered for radiotherapy decision-making after a mastectomy and an eligibility criterion for the adjuvant RT trials.[56, 57] The definitions of recurrence risk, whilst based on published data and justifiable, would no doubt be debated between clinicians. Similarly, the definitions of fitness could be challenged. Nonetheless, there are no universally agreed definitions in the published literature, these definitions were predefined and have been used consistently across our analyses.[17, 18] Despite broad eligibility criteria and a pragmatic design selection bias was possible due to clinician issues, staffing resources, patients' lack of interest and trial burden.[58] Missing data on longitudinal HRQoL assessments may have influenced our findings. The impact of endocrine therapy was not factored in the HRQoL analysis although this can be prolonged.[59] We could not investigate the impact of RT dose and nodal RT on HRQoL as those data were not routinely collected within the study and only 13.7% of patients received it to the regional

nodes. Our findings may not be applicable to other countries, although previous data appear comparable.[60] Some statistically significant effects of RT on HRQoL might not be clinically relevant, whereas small effects may still substantially influence patients' perceived well-being. Finally, we have not evaluated the impact of RT on ipsilateral recurrence risk as data on relapse laterality were not captured.

In summary, this study demonstrates that fitness is not a major determinant of RT decisions for older EBC patients undergoing BCS or mastectomy and a significant number of vulnerable older women with both high-risk and low-risk EBC receive adjuvant RT. Some may derive little benefit from RT. There was also a low PMRT rate of in women at high-risk suggesting some undertreatment. Potential risks and benefits require discussion in view of the toxicity risk and the transient negative impact on breast symptoms. Nonetheless, individualised treatment decisions and discussions should be made to ensure the best outcomes. These findings argue for the routine measurement of fitness in older patients to be included in radiotherapy practice guidelines for older patients with operable breast cancer.

ADDITIONAL INFORMATION

Acknowledgements

This paper presents independent research funded by the National Institute for Health Research (NIHR) under its Programme Grants for Applied Research Programme (grant reference number RP-PG-1209-10071). In addition, NB and AR would like to acknowledge the support of the Cridlan Ross Smith Charitable Trust and the NIHR Biomedical Research Centre at The Royal Marsden NHS Foundation Trust and the Institute of Cancer Research, London.

The views expressed are those of the authors and not necessarily those of the National Health Service, the NIHR or the Department of Health.

Authors' contributions

All the authors conceived and designed the work that led to the submission, drafted and revised the manuscript and approved the final version.

Ethics approval and consent to participate

Ethics approval (IRAS: 12 LO 1808) and research governance approval were obtained. All patients (or their proxies, if cognitively impaired) gave written informed consent.

Consent for publication

Not applicable.

Data availability

The datasets generated during and/or analysed during the current study are available from the corresponding author on reasonable request.

Competing interests

The authors declare no conflict of interest. Professors Stephen Walters and Thompson Robinson are National Institute for Health Research (NIHR) Senior Investigators, Jenna Morgan is a NIHR Clinical Lecturer and Kate Lifford was funded by the NIHR as part of this project. The views expressed in this article are those of the author(s) and not necessarily those of the NIHR, or the Department of Health and Social Care.

Funding information

The study was sponsored by Doncaster and Bassetlaw Teaching Hospitals NHS Foundation Trust. Clinical Research Office, First Floor 'C' Block, Doncaster Royal Infirmary, Armthorpe Road, Doncaster, DN2 5LT, UK.

This paper presents independent research funded by the National Institute for Health Research (NIHR) under its Programme Grants for Applied Research Programme (Grant Reference Number RP-PG-1209-10071). The views expressed are those of the authors and not necessarily those of the NIHR or the Department of Health and Social Care.

REFERENCES

- [1] Ferlay J, Ervik M, Lam F, Colombet M, Mery L, Piñeros M, et al. Global Cancer Observatory: Cancer Today. Lyon, France 2018.
- [2] Statistics OfN. Cancer survival in England: Patients diagnosed between 2010 and 2014 and followed up to 2015. Newport, UK 2016.
- [3] Moller H, Flatt G, Moran A. High cancer mortality rates in the elderly in the UK. *Cancer Epidemiol.* 2011;35:407-12.
- [4] Hutchins LF, Unger JM, Crowley JJ, Coltman CA, Jr., Albain KS. Underrepresentation of patients 65 years of age or older in cancer-treatment trials. *N Engl J Med.* 1999;341:2061-7.
- [5] Al-Refaie WB, Vickers SM, Zhong W, Parsons H, Rothenberger D, Habermann EB. Cancer trials versus the real world in the United States. *Ann Surg.* 2011;254:438-42; discussion 42-3.
- [6] Sedrak MS, Freedman RA, Cohen HJ, Muss HB, Jatoi A, Klepin HD, et al. Older adult participation in cancer clinical trials: A systematic review of barriers and interventions. *CA: A Cancer Journal for Clinicians.* n/a.
- [7] Battisti NML, Wallington M, Ring A, Payne S, Birch R, Bomb M, et al. Is age a barrier to chemotherapy? Rates of treatment in older patients treated with breast, colon and lung cancer in England in 2014: a national registry study. *Annals of Oncology.* 2018;29:viii562-viii75.
- [8] Derks MGM, Bastiaannet E, Kiderlen M, Hilling DE, Boelens PG, Walsh PM, et al. Variation in treatment and survival of older patients with non-metastatic breast cancer in five European countries: a population-based cohort study from the EURECCA Breast Cancer Group. *Br J Cancer.* 2018;119:121-9.
- [9] Cree A, O'Donovan A, O'Hanlon S. New horizons in radiotherapy for older people. *Age and Ageing.* 2019;48:605-12.
- [10] Veronesi U, Luini A, Del Vecchio M, Greco M, Galimberti V, Merson M, et al. Radiotherapy after breast-preserving surgery in women with localized cancer of the breast. *N Engl J Med.* 1993;328:1587-91.
- [11] Smith BD, Gross CP, Smith GL, Galusha DH, Bekelman JE, Haffty BG. Effectiveness of radiation therapy for older women with early breast cancer. *J Natl Cancer Inst.* 2006;98:681-90.
- [12] Hughes KS, Schnaper LA, Bellon JR, Cirrincione CT, Berry DA, McCormick B, et al. Lumpectomy plus tamoxifen with or without irradiation in women age 70 years or older with early breast cancer: long-term follow-up of CALGB 9343. *J Clin Oncol.* 2013;31:2382-7.
- [13] Kunkler IH, Williams LJ, Jack WJ, Cameron DA, Dixon JM. Breast-conserving surgery with or without irradiation in women aged 65 years or older with early breast cancer (PRIME II): a randomised controlled trial. *Lancet Oncol.* 2015;16:266-73.
- [14] Kunkler IH, Williams LJ, Jack WJL, Cameron D, Dixon JM. PRIME 2 randomized trial (Postoperative Radiotherapy in Minimum-Risk Elderly): wide local excision and adjuvant hormonal therapy +/- whole breast irradiation in women ≥ 65 years with early invasive breast cancer: 10 year results [GS2-03]. 2020 San Antonio Breast Cancer Symposium. Virtual 2020.
- [15] Darby S, McGale P, Correa C, Taylor C, Arriagada R, Clarke M, et al. Effect of radiotherapy after breast-conserving surgery on 10-year recurrence and 15-year breast cancer death: meta-analysis of individual patient data for 10,801 women in 17 randomised trials. *Lancet.* 2011;378:1707-16.
- [16] Wyld L, Reed MWR, Morgan J, Collins K, Ward S, Holmes GR, et al. Bridging the age gap in breast cancer. Impacts of omission of breast cancer surgery in older women with oestrogen receptor positive early breast cancer. A risk stratified analysis of survival outcomes and quality of life. *Eur J Cancer.* 2021;142:48-62.
- [17] Battisti NML, Ring A, Bradburn M, Wyld L. Abstract P2-14-08: Use of systemic therapy for early stage breast cancer in older adults: Results from the Bridging the Age Gap study. *Cancer Research.* 2020;80:P2-14-08-P2-14-08.
- [18] Battisti NML, Herbert E, Bradburn M, Morgan J, Wyld L, Ring A. Impact of chemotherapy for early stage breast cancer on quality of life in older adults: results from 2811 women enrolled

in the Bridging the Age Gap study (#2586). European Society for Medical Oncology (ESMO) Virtual Congress2020.

[19] Morgan JL, Holmes G, Ward S, Martin C, Burton M, Walters SJ, et al. Observational cohort study to determine the degree and causes of variation in the rate of surgery or primary endocrine therapy in older women with operable breast cancer. *Eur J Surg Oncol*. 2020.

[20] Charlson ME, Pompei P, Ales KL, MacKenzie CR. A new method of classifying prognostic comorbidity in longitudinal studies: development and validation. *J Chronic Dis*. 1987;40:373-83.

[21] Ottery FD. Definition of standardized nutritional assessment and interventional pathways in oncology. *Nutrition*. 1996;12:S15-9.

[22] Viganò AL, di Tomasso J, Kilgour RD, Trutschnigg B, Lucar E, Morais JA, et al. The abridged patient-generated subjective global assessment is a useful tool for early detection and characterization of cancer cachexia. *J Acad Nutr Diet*. 2014;114:1088-98.

[23] Mahoney FI, Barthel DW. FUNCTIONAL EVALUATION: THE BARTHEL INDEX. *Md State Med J*. 1965;14:61-5.

[24] Lawton MP, Brody EM. Assessment of older people: self-maintaining and instrumental activities of daily living. *Gerontologist*. 1969;9:179-86.

[25] Folstein MF, Folstein SE, McHugh PR. "Mini-mental state". A practical method for grading the cognitive state of patients for the clinician. *J Psychiatr Res*. 1975;12:189-98.

[26] Aaronson NK, Ahmedzai S, Bergman B, Bullinger M, Cull A, Duez NJ, et al. The European Organization for Research and Treatment of Cancer QLQ-C30: a quality-of-life instrument for use in international clinical trials in oncology. *J Natl Cancer Inst*. 1993;85:365-76.

[27] Sprangers MA, Groenvold M, Arraras JI, Franklin J, te Velde A, Muller M, et al. The European Organization for Research and Treatment of Cancer breast cancer-specific quality-of-life questionnaire module: first results from a three-country field study. *J Clin Oncol*. 1996;14:2756-68.

[28] Johnson C, Fitzsimmons D, Gilbert J, Arraras JI, Hammerlid E, Bredart A, et al. Development of the European Organisation for Research and Treatment of Cancer quality of life questionnaire module for older people with cancer: The EORTC QLQ-ELD15. *Eur J Cancer*. 2010;46:2242-52.

[29] Fayers PM, Aaronson NK, Bjordal K, Groenvold M, Curran D, Bottomley A. The EORTC QLQ-C30 Scoring Manual (3rd Edition)2001.

[30] R: A language and environment for statistical computing. R Foundation for Statistical Computing. Vienna, Austria: R Core Team 2020.

[31] Stata Statistical Software: Release 16. College Station, TX: StataCorp LLC; 2019.

[32] (NICE) NifHaCE. Early and locally advanced breast cancer: diagnosis and management. 2018.

[33] Mukesh MB, Duke S, Parashar D, Wishart G, Coles CE, Wilson C. The Cambridge post-mastectomy radiotherapy (C-PMRT) index: a practical tool for patient selection. *Radiother Oncol*. 2014;110:461-6.

[34] Velikova G, Williams LJ, Willis S, Dixon JM, Loncaster J, Hatton M, et al. Quality of life after postmastectomy radiotherapy in patients with intermediate-risk breast cancer (SUPREMO): 2-year follow-up results of a randomised controlled trial. *Lancet Oncol*. 2018;19:1516-29.

[35] von Elm E, Altman DG, Egger M, Pocock SJ, Gøtzsche PC, Vandenbroucke JP. The Strengthening the Reporting of Observational Studies in Epidemiology (STROBE) statement: guidelines for reporting observational studies. *J Clin Epidemiol*. 2008;61:344-9.

[36] World Population Aging. United Nations: Department of Economic and Social Affairs; 2019.

[37] Breast Cancer. Version 2.2021 (12/03/2021). NCCN Clinical Practice Guidelines in Oncology: National Comprehensive Cancer Network; 2021.

[38] Burstein HJ, Curigliano G, Loibl S, Dubsy P, Gnani M, Poortmans P, et al. Estimating the benefits of therapy for early-stage breast cancer: the St. Gallen International Consensus Guidelines for the primary therapy of early breast cancer 2019. *Ann Oncol*. 2019;30:1541-57.

- [39] Postoperative radiotherapy for breast cancer: UK consensus statements. The Royal College of Radiologists: Faculty of Clinical Oncology; 2016.
- [40] McGale P, Taylor C, Correa C, Cutter D, Duane F, Ewertz M, et al. Effect of radiotherapy after mastectomy and axillary surgery on 10-year recurrence and 20-year breast cancer mortality: meta-analysis of individual patient data for 8135 women in 22 randomised trials. *Lancet*. 2014;383:2127-35.
- [41] Kunkler IH, Canney P, van Tienhoven G, Russell NS. Elucidating the Role of Chest Wall Irradiation in Intermediate-risk Breast Cancer: the MRC/EORTC SUPREMO Trial. *Clinical Oncology*. 2008;20:31-4.
- [42] National Audit of Breast Cancer in Older Patients. 2020 Annual Report: Results of the prospective audit in England and Wales for women diagnosed between January 2014 and December 2018.: NABCOP project team; 2020.
- [43] Murray Brunt A, Haviland JS, Wheatley DA, Sydenham MA, Alhasso A, Bloomfield DJ, et al. Hypofractionated breast radiotherapy for 1 week versus 3 weeks (FAST-Forward): 5-year efficacy and late normal tissue effects results from a multicentre, non-inferiority, randomised, phase 3 trial. *The Lancet*. 2020;395:1613-26.
- [44] de Boer AZ, Bastiaannet E, de Glas NA, Marang-van de Mheen PJ, Dekkers OM, Siesling S, et al. Effectiveness of radiotherapy after breast-conserving surgery in older patients with T1-2N0 breast cancer. *Breast Cancer Res Treat*. 2019;178:637-45.
- [45] Hughes KS, Schnapper LA, Berry D, Cirincione C, McCormick B, Shank B. Lumpectomy plus tamoxifen with or without irradiation in women 70 years of age or older with early breast cancer. 2004;351:971-7.
- [46] van de Water W, Bastiaannet E, Scholten AN, Kiderlen M, de Craen AJ, Westendorp RG, et al. Breast-conserving surgery with or without radiotherapy in older breast patients with early stage breast cancer: a systematic review and meta-analysis. *Ann Surg Oncol*. 2014;21:786-94.
- [47] Shumway DA, Griffith KA, Sabel MS, Jones RD, Forstner JM, Bott-Kothari TL, et al. Surgeon and Radiation Oncologist Views on Omission of Adjuvant Radiotherapy for Older Women with Early-Stage Breast Cancer. *Ann Surg Oncol*. 2017;24:3518-26.
- [48] Wang T, Mott N, Miller J, Berlin NL, Hawley S, Jagsi R, et al. Patient Perspectives on Treatment Options for Older Women With Hormone Receptor-Positive Breast Cancer: A Qualitative Study. *JAMA Netw Open*. 2020;3:e2017129.
- [49] Older Adult Oncology. Version 1.2020 (07/02/2020). NCCN Clinical Practice Guidelines in Oncology: National Comprehensive Cancer Network; 2020.
- [50] Decoster L, Van Puyvelde K, Mohile S, Wedding U, Basso U, Colloca G, et al. Screening tools for multidimensional health problems warranting a geriatric assessment in older cancer patients: an update on SIOG recommendations†. *Ann Oncol*. 2015;26:288-300.
- [51] Wildiers H, Heeren P, Puts M, Topinkova E, Janssen-Heijnen ML, Extermann M, et al. International Society of Geriatric Oncology consensus on geriatric assessment in older patients with cancer. *J Clin Oncol*. 2014;32:2595-603.
- [52] McCormick B, Ottesen RA, Hughes ME, Javid SH, Khan SA, Mortimer J, et al. Impact of Guideline Changes on Use or Omission of Radiation in the Elderly with Early Breast Cancer: Practice Patterns at National Comprehensive Cancer Network Institutions. *Journal of the American College of Surgeons*. 2014;219:796-802.
- [53] Chu QD, Zhou M, Medeiros KL, Peddi P, Wu XC. Impact of CALGB 9343 Trial and Sociodemographic Variation on Patterns of Adjuvant Radiation Therapy Practice for Elderly Women (≥70 Years) with Stage I, Estrogen Receptor-positive Breast Cancer: Analysis of the National Cancer Data Base. *Anticancer Res*. 2017;37:5585-94.
- [54] Williams LJ, Kunkler IH, King CC, Jack W, van der Pol M. A randomised controlled trial of post-operative radiotherapy following breast-conserving surgery in a minimum-risk population. Quality of life at 5 years in the PRIME trial. 2011;15:12.
- [55] Coles CE, Griffin CL, Kirby AM, Titley J, Agrawal RK, Alhasso A, et al. Partial-breast radiotherapy after breast conservation surgery for patients with early breast cancer (UK IMPORT LOW trial): 5-year results from a multicentre, randomised, controlled, phase 3, non-inferiority trial. *The Lancet*. 2017;390:1048-60.

- [56] Truong PT, Olivetto IA, Speers CH, Wai ES, Berthelet E, Kader HA. A positive margin is not always an indication for radiotherapy after mastectomy in early breast cancer. *Int J Radiat Oncol Biol Phys.* 2004;58:797-804.
- [57] Smitt MC, Nowels KW, Zdeblick MJ, Jeffrey S, Carlson RW, Stockdale FE, et al. The importance of the lumpectomy surgical margin status in long-term results of breast conservation. *Cancer.* 1995;76:259-67.
- [58] Todd A, Martin C, Morgan J, Herbert E, Bradburn M, Burton M, et al. Age specific recruitment and retention to a large multicentre observational breast cancer trial in older women: The Age Gap Trial. *Journal of Geriatric Oncology.* 2020.
- [59] Ferreira AR, Di Meglio A, Pistilli B, Gbenou AS, El-Mouhebb M, Dauchy S, et al. Differential impact of endocrine therapy and chemotherapy on quality of life of breast cancer survivors: a prospective patient-reported outcomes analysis. *Ann Oncol.* 2019;30:1784-95.
- [60] Bastiaannet E, Liefers GJ, de Craen AJ, Kuppen PJ, van de Water W, Portielje JE, et al. Breast cancer in elderly compared to younger patients in the Netherlands: stage at diagnosis, treatment and survival in 127,805 unselected patients. *Breast Cancer Res Treat.* 2010;124:801-7.

FIGURE AND TABLE CAPTIONS

- Figure 1 - STROBE flow diagram for the radiotherapy vs no radiotherapy analyses.
- Table 1 - Postoperative tumour, patient and treatment characteristics by surgery type.
- Table 2 - Relationship between radiotherapy use and patient characteristics: univariate (Table 2a) and multivariable (Table 2b) analyses.
 - Table 2a - Results for univariate logistic regression models.
 - Table 2b - Results from the multivariable logistic regression model.
- Table 3 - Radiotherapy use according to risk of recurrence and fitness.
 - Table 3a - Use of radiotherapy after breast-conserving surgery by risk of recurrence and fitness.
 - Table 3b - Use of radiotherapy after breast-conserving surgery by combined risk of recurrence and fitness.
 - Table 3c - Use of radiotherapy after mastectomy by risk of recurrence and fitness.
 - Table 3d - Use of radiotherapy after mastectomy by combined risk of recurrence and fitness.
- Figure 2 – Mean (95% CI) scores over time points for the radiotherapy versus no radiotherapy population measured on the EORTC-QLQ-BR23 in patients undergoing breast-conserving surgery (A) and a mastectomy (B).
- Figure 3 – Funnel plot of radiotherapy use by site (N=56). Proportion of patients enrolled in cohort study receiving radiotherapy against number of patients enrolled.

Figure 1 - STROBE flow diagram for the radiotherapy vs no radiotherapy analyses.

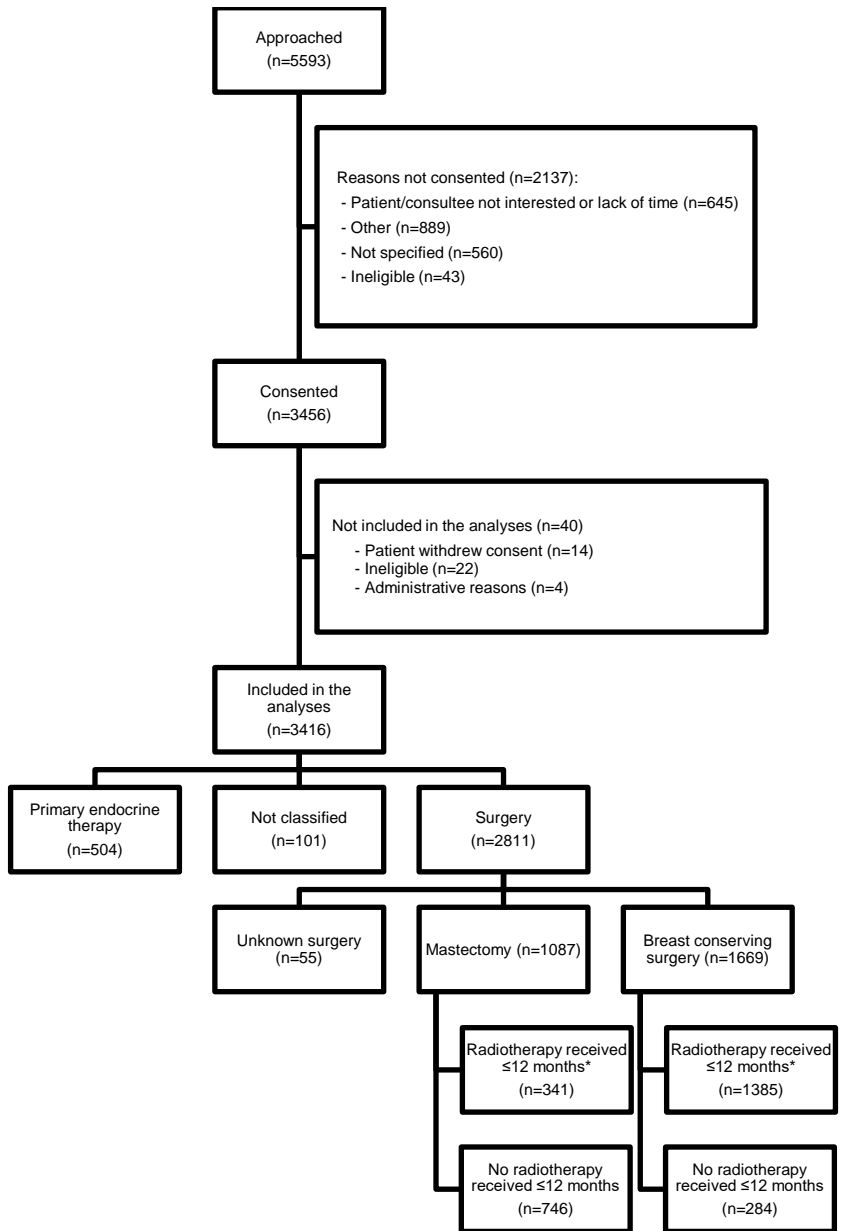


Table 1 - Postoperative tumour, patient and treatment characteristics by surgery type.

| | | BCS | Mastectomy | Unknown | Total |
|----------------------------|------------------|-----------------|-------------------|----------------|-----------------|
| | | N = 1669 | N = 1087 | N = 55 | N = 2811 |
| Age (years) | 70-74 | 813 (48.7%) | 342 (31.5%) | 18 (32.7%) | 1173 (41.7%) |
| | 75-79 | 521 (31.2%) | 356 (32.7%) | 22 (40.0%) | 899 (32.0%) |
| | 80-84 | 243 (14.5%) | 253 (23.3%) | 10 (18.2%) | 506 (18.0%) |
| | ≥85 | 92 (5.6%) | 136 (12.5%) | 5 (9.1%) | 233 (8.3%) |
| Participation level | Full | 1277 (76.5%) | 792 (72.9%) | 42 (76.4%) | 2111 (75.1%) |
| | Partial | 356 (21.3%) | 253 (23.3%) | 12 (21.8%) | 621 (22.1%) |
| | Consultee | 36 (2.2%) | 42 (3.9%) | 1 (1.8%) | 79 (2.8%) |
| Laterality | Right | 776 (46.5%) | 501 (46.1%) | 28 (50.9%) | 1305 (46.4%) |
| | Left | 893 (53.5%) | 586 (53.9%) | 27 (49.1%) | 1506 (53.6%) |
| Tumour size (mm) | ≤ 20 | 1001 (60.0%) | 278 (25.6%) | 0 (0.0%) | 1279 (45.5%) |
| | 21-50 | 641 (38.4%) | 644 (59.2%) | 0 (0.0%) | 1285 (45.7%) |
| | > 50 | 24 (1.4%) | 163 (15.0%) | 1 (1.8%) | 188 (6.7%) |
| | Unknown | 3 (0.2%) | 2 (0.2%) | 54 (98.2%) | 59 (2.1%) |
| Nodal status | pN0 | 1302 (78.0%) | 610 (56.1%) | 1 (1.8%) | 1913 (68.1%) |
| | pN1 | 302 (18.1%) | 310 (28.5%) | 0 (0.0%) | 612 (21.8%) |
| | pN2 | 48 (2.9%) | 99 (9.1%) | 0 (0.0%) | 147 (5.2%) |
| | pN3 | 13 (0.8%) | 64 (5.9%) | 0 (0.0%) | 77 (2.7%) |
| | Unknown | 4 (0.2%) | 4 (0.4%) | 54 (98.2%) | 62 (2.2%) |

| | | BCS | Mastectomy | Unknown | Total |
|---------------------|---------------------------|-----------------|-------------------|----------------|-----------------|
| | | N = 1669 | N = 1087 | N = 55 | N = 2811 |
| Grade | 1 | 306 (18.3%) | 75 (6.9%) | 0 (0.0%) | 381 (13.6%) |
| | 2 | 920 (55.1%) | 565 (52.0%) | 0 (0.0%) | 1485 (52.8%) |
| | 3 | 427 (25.6%) | 437 (40.2%) | 1 (1.8%) | 865 (30.8%) |
| | Unknown | 16 (1.0%) | 10 (0.9%) | 54 (98.2%) | 80 (2.8%) |
| Histology | Ductal carcinoma | 1133 (67.9%) | 658 (60.5%) | 24 (43.6%) | 1815 (64.6%) |
| | Lobular carcinoma | 163 (9.8%) | 202 (18.6%) | 10 (18.2%) | 375 (13.3%) |
| | Tubular carcinoma | 27 (1.6%) | 2 (0.2%) | 0 (0.0%) | 29 (1.0%) |
| | Mucinous carcinoma | 47 (2.8%) | 23 (2.1%) | 1 (1.8%) | 71 (2.5%) |
| | Other | 162 (9.7%) | 103 (9.5%) | 1 (1.8%) | 266 (9.5%) |
| | Unknown | 137 (8.2%) | 99 (9.1%) | 19 (34.5%) | 255 (9.1%) |
| ER status | Negative | 167 (10.0%) | 205 (18.9%) | 0 (0.0%) | 372 (13.2%) |
| | Positive | 1487 (89.1%) | 866 (79.7%) | 1 (1.8%) | 2354 (83.7%) |
| | Unknown | 15 (0.9%) | 16 (1.5%) | 54 (98.2%) | 85 (3.0%) |
| HER2 status | Negative | 1424 (85.3%) | 847 (77.9%) | 1 (1.8%) | 2272 (80.8%) |
| | Positive | 146 (8.7%) | 186 (17.1%) | 0 (0.0%) | 332 (11.8%) |
| | Inconclusive | 16 (1.0%) | 6 (0.6%) | 0 (0.0%) | 22 (0.8%) |
| | Unknown | 83 (5.0%) | 48 (4.4%) | 54 (98.2%) | 185 (6.6%) |
| ADL category | No dependency | 1203 (72.1%) | 759 (69.8%) | 42 (76.4%) | 2004 (71.3%) |
| | Mild dependency | 184 (11.0%) | 122 (11.2%) | 2 (3.6%) | 308 (11.0%) |

| | BCS | Mastectomy | Unknown | Total | |
|--------------------------------|-----------------------------------|-------------------|----------------|-----------------|--------------|
| | N = 1669 | N = 1087 | N = 55 | N = 2811 | |
| | Moderate/severe dependency | 152 (9.1%) | 123 (11.3%) | 3 (5.5%) | 278 (9.9%) |
| | Unknown | 130 (7.8%) | 83 (7.6%) | 8 (14.5%) | 221 (7.9%) |
| IADL category | No dependency | 1269 (76.0%) | 767 (70.6%) | 33 (60.0%) | 2069 (73.6%) |
| | Mild dependency | 134 (8.0%) | 108 (9.9%) | 7 (12.7%) | 249 (8.9%) |
| | Moderate/severe dependency | 128 (7.7%) | 122 (11.2%) | 8 (14.5%) | 258 (9.2%) |
| | Unknown | 138 (8.3%) | 90 (8.3%) | 7 (12.7%) | 235 (8.4%) |
| MMSE category | Normal function | 1498 (89.8%) | 945 (86.9%) | 51 (92.7%) | 2494 (88.7%) |
| | Mild impairment | 135 (8.1%) | 111 (10.2%) | 2 (3.6%) | 248 (8.8%) |
| | Moderate impairment | 19 (1.1%) | 16 (1.5%) | 1 (1.8%) | 36 (1.3%) |
| | Severe impairment | 17 (1.0%) | 15 (1.4%) | 1 (1.8%) | 33 (1.2%) |
| AGP SGA category | Low | 1310 (78.5%) | 834 (76.7%) | 36 (65.5%) | 2180 (77.6%) |
| | Moderate | 159 (9.5%) | 122 (11.2%) | 7 (12.7%) | 288 (10.2%) |
| | High | 27 (1.6%) | 13 (1.2%) | 0 (0.0%) | 40 (1.4%) |
| | Unknown | 173 (10.4%) | 118 (10.9%) | 12 (21.8%) | 303 (10.8%) |
| ECOG performance status | 0 | 1197 (71.7%) | 717 (66.0%) | 30 (54.5%) | 1944 (69.2%) |
| | 1 | 332 (19.9%) | 259 (23.8%) | 16 (29.1%) | 607 (21.6%) |
| | 2 | 39 (2.3%) | 38 (3.5%) | 3 (5.5%) | 80 (2.8%) |
| | 3 | 15 (0.9%) | 21 (1.9%) | 0 (0.0%) | 36 (1.3%) |
| | 4 | 0 (0.0%) | 1 (0.1%) | 0 (0.0%) | 1 (0.0%) |

| | | BCS | Mastectomy | Unknown | Total |
|--------------------------------------------|-------------------------------------|-------------------|-------------------|-------------------|-------------------|
| | | N = 1669 | N = 1087 | N = 55 | N = 2811 |
| | Unknown | 86 (5.2%) | 51 (4.7%) | 6 (10.9%) | 143 (5.1%) |
| Charlson comorbidity index (no age) | n | 1607 | 1052 | 48 | 2707 |
| | Mean (SD) | 1.00 (1.26) | 1.05 (1.36) | 1.58 (1.32) | 1.03 (1.30) |
| | Median (IQR) | 1.00 (0.00, 2.00) | 0.00 (0.00, 2.00) | 2.00 (1.00, 2.00) | 1.00 (0.00, 2.00) |
| | Min, Max | 0, 9 | 0, 9 | 0, 6 | 0, 9 |
| Number of concurrent medications | n | 1447 | 961 | 38 | 2446 |
| | Mean (SD) | 4.02 (2.63) | 4.11 (2.66) | 4.37 (2.55) | 4.06 (2.64) |
| | Median (IQR) | 4.00 (2.00, 6.00) | 4.00 (2.00, 5.00) | 4.00 (3.00, 5.75) | 4.00 (2.00, 5.75) |
| | Min, Max | 0, 15 | 0, 18 | 1, 13 | 0, 18 |
| Axillary surgery | Axillary sampling | 49 (2.9%) | 37 (3.4%) | 2 (3.6%) | 88 (3.1%) |
| | Axillary clearance | 113 (6.8%) | 292 (26.9%) | 9 (16.4%) | 414 (14.7%) |
| | Sentinel lymph node biopsy | 1329 (79.6%) | 628 (57.8%) | 23 (41.8%) | 1980 (70.4%) |
| | Internal mammary node biopsy | 0 (0.0%) | 1 (0.1%) | 0 (0.0%) | 1 (0.0%) |
| | No axillary surgery | 44 (2.6%) | 34 (3.1%) | 2 (3.6%) | 80 (2.8%) |
| | Unknown | 134 (8.0%) | 95 (8.7%) | 19 (34.5%) | 248 (8.8%) |
| Chemotherapy use | Yes | 186 (11.1%) | 202 (18.6%) | 9 (16.4%) | 397 (14.1%) |
| | No | 1483 (88.9%) | 885 (81.4%) | 46 (83.6%) | 2414 (85.9%) |
| Radiotherapy use | Yes | 1385 (83.0%) | 341 (31.4%) | 27 (49.1%) | 1753 (62.4%) |
| | No | 284 (17.0%) | 746 (68.6%) | 28 (50.9%) | 1058 (37.6%) |

Table 2 - Relationship between radiotherapy use and patient characteristics: univariate (Table 2a) and multivariable (Table 2b) analyses.

Table 2a - Results for univariate logistic regression models.

| Variable | Level | OR (95% CI) | P-value |
|-----------------------------------------|---------------------|-------------------|---------|
| Breast conserving surgery cohort | | | |
| Increasing age | | 0.94 (0.92, 0.97) | <0.001 |
| Increasing ADL score | | 1.02 (1.00, 1.05) | 0.070 |
| Increasing IADL score | | 1.34 (1.17, 1.53) | <0.001 |
| Increasing CCI (not age-adjusted) | | 0.93 (0.84, 1.03) | 0.163 |
| Increasing APG SGA score | | 0.94 (0.89, 1.00) | 0.051 |
| MMSE category | Normal function | - | - |
| | Mild impairment | 0.64 (0.42, 0.99) | 0.039 |
| | Moderate impairment | 0.72 (0.26, 2.53) | 0.555 |
| | Severe impairment | 0.17 (0.06, 0.45) | <0.001 |
| Tumour grade | Grade 1 | - | - |
| | Grade 2 | 1.97 (1.44, 2.69) | <0.001 |
| | Grade 3 | 2.49 (1.70, 3.66) | <0.001 |
| ER-positive status | | 1.10 (0.71, 1.65) | 0.657 |
| HER2 status* | Negative | - | - |
| | Positive | 0.87 (0.57, 1.38) | 0.539 |
| Nodal status** | pN0 | - | - |
| | pN1 | 2.50 (1.66, 3.95) | <0.001 |
| | pN2 | 0.86 (0.44, 1.84) | 0.674 |
| | pN3 | 0.26 (0.09, 0.83) | 0.017 |
| Mastectomy cohort | | | |
| Increasing age | | 0.99 (0.97, 1.02) | 0.519 |
| Increasing ADL score | | 1.00 (0.98, 1.02) | 0.906 |
| Increasing IADL score | | 1.01 (0.90, 1.15) | 0.831 |
| Increasing CCI (not age-adjusted) | | 1.07 (0.97, 1.17) | 0.184 |
| Increasing APG SGA score | | 1.01 (0.93, 1.09) | 0.800 |
| MMSE category | Normal function | - | - |

| Variable | Level | OR (95% CI) | P-value |
|---------------------------|----------------------------|----------------------|---------|
| | Mild impairment | 0.82 (0.52, 1.25) | 0.364 |
| | Moderate impairment | 0.96 (0.30, 2.66) | 0.938 |
| | Severe | 0.15 (0.01, 0.75) | 0.068 |
| Tumour grade | Grade 1 | - | - |
| | Grade 2 | 3.08 (1.58, 6.75) | 0.002 |
| | Grade 3 | 4.24 (2.16, 9.33) | <0.001 |
| ER-positive status | | 0.89 (0.64, 1.23) | 0.472 |
| HER2 status* | Negative | - | - |
| | Positive | 1.04 (0.74, 1.46) | 0.821 |
| T stage | T1 | - | - |
| | T2 | 3.38 (2.30, 5.08) | <0.001 |
| | T3 | 11.39 (7.14, 18.58) | <0.001 |
| Nodal status** | pN0 | - | - |
| | pN1 | 4.46 (3.24, 6.16) | <0.001 |
| | pN2 | 17.11 (10.48, 28.71) | <0.001 |
| | pN3 | 19.90 (10.94, 38.21) | <0.001 |

* Tests marked as 'Inconclusive' were removed from this analysis.

** Those with nodal status pNx were removed from this analysis

Table 2b - Results from the multivariable logistic regression model.

| Variable | Level | OR (95% CI) | P-value |
|-----------------------------------------|------------------------------------|-------------------|---------|
| Breast conserving surgery cohort | | | |
| Increasing age | | 0.95 (0.92, 0.99) | 0.008 |
| Increasing IADL score | | 1.14 (0.93, 1.38) | 0.208 |
| Increasing APG SGA score | | 0.96 (0.90, 1.03) | 0.212 |
| Tumour grade | Grade 1 | - | - |
| | Grade 2 | 1.87 (1.23, 2.83) | 0.003 |
| | Grade 3 | 3.68 (2.14, 6.46) | <0.001 |
| MMSE category | Normal function | - | - |
| | Mild impairment | 0.64 (0.37, 1.11) | 0.103 |
| | Moderate/severe impairment* | 1.14 (0.34, 5.30) | 0.851 |

| Variable | Level | OR (95% CI) | P-value |
|--------------------------|----------------|---------------------|---------|
| Nodal status** | pN0 | - | - |
| | pN1 | 2.55 (1.45, 4.87) | 0.002 |
| | pN2 | 0.90 (0.38, 2.50) | 0.825 |
| | pN3 | 1.03 (0.16, 20.43) | 0.976 |
| Mastectomy cohort | | | |
| Tumour grade | Grade 1 | - | - |
| | Grade 2 | 1.55 (0.74, 3.58) | 0.269 |
| | Grade 3 | 1.73 (0.82, 4.02) | 0.172 |
| T stage | T1 | - | - |
| | T2 | 2.27 (1.47, 3.58) | <0.001 |
| | T3 | 7.52 (4.42, 13.06) | <0.001 |
| Nodal status* | pN0 | - | - |
| | pN1 | 4.37 (3.12, 6.16) | <0.001 |
| | pN2 | 14.19 (8.48, 24.38) | <0.001 |
| | pN3 | 14.22 (7.59, 27.98) | <0.001 |

* Moderate and severe categories have been combined due to small numbers in the severe category.

** Those with nodal status pNx were removed from this analysis

Table 3 - Radiotherapy use according to risk of recurrence and fitness.*

Table 3a - Use of radiotherapy after breast-conserving surgery by risk of recurrence and fitness.

| Risk | Radiotherapy | No radiotherapy | Total |
|---------------------------|---------------------|--------------------|----------------------|
| Risk of recurrence | | | |
| Higher risk | 709 (86.5%) | 111 (13.5%) | 820 (100.0%) |
| Lower risk | 676 (79.6%) | 173 (20.4%) | 849 (100.0%) |
| Total | 1385 (14.1%) | 284 (85.9%) | 1669 (100.0%) |
| Fitness | | | |
| Fit | 1061 (84.5%) | 194 (15.4%) | 1255 (100.0%) |
| Vulnerable | 323 (78.2%) | 90 (21.8%) | 413 (100.0%) |
| Frail | 1 (100.0%) | 0 (0.0%) | 1 (100.0%) |
| Total | 1385 (83.0%) | 284 (17.0%) | 1669 (100.0%) |

Table 3b - Use of radiotherapy after breast-conserving surgery by combined risk of recurrence and fitness.

| Fitness | Higher risk | | Lower risk | | Total |
|--------------|--------------------|-------------------|--------------------|--------------------|-----------------------|
| | Radiotherapy | No radiotherapy | Radiotherapy | No radiotherapy | |
| Fit | 534 (42.55%) | 79 (6.29%) | 527 (41.99%) | 115 (9.16%) | 1255 (100.00%) |
| Vulnerable | 174 (42.1%) | 32 (7.7%) | 149 (36.1%) | 58 (14.0%) | 413 (100.0%) |
| Frail | 1 (100%) | 0 (0.0%) | 0 (0.0%) | 0 (0.0%) | 1 (100%) |
| Total | 709 (42.5%) | 111 (6.7%) | 676 (40.5%) | 173 (10.4%) | 1669 (100.0%) |

Table 3c - Use of radiotherapy after mastectomy by risk of recurrence and fitness.

| Risk | Radiotherapy | No radiotherapy | Total |
|---------------------------|--------------------|--------------------|----------------------|
| Risk of recurrence | | | |
| Higher risk | 255 (53.2%) | 224 (46.8%) | 479 (100.0%) |
| Lower risk | 86 (14.1%) | 522 (85.9%) | 608 (100.0%) |
| Total | 341 (31.4%) | 746 (68.6%) | 1087 (100.0%) |
| Fitness | | | |
| Fit | 242 (31.6%) | 524 (68.4%) | 766 (100.0%) |
| Vulnerable | 98 (30.6%) | 222 (69.4%) | 320 (100.0%) |

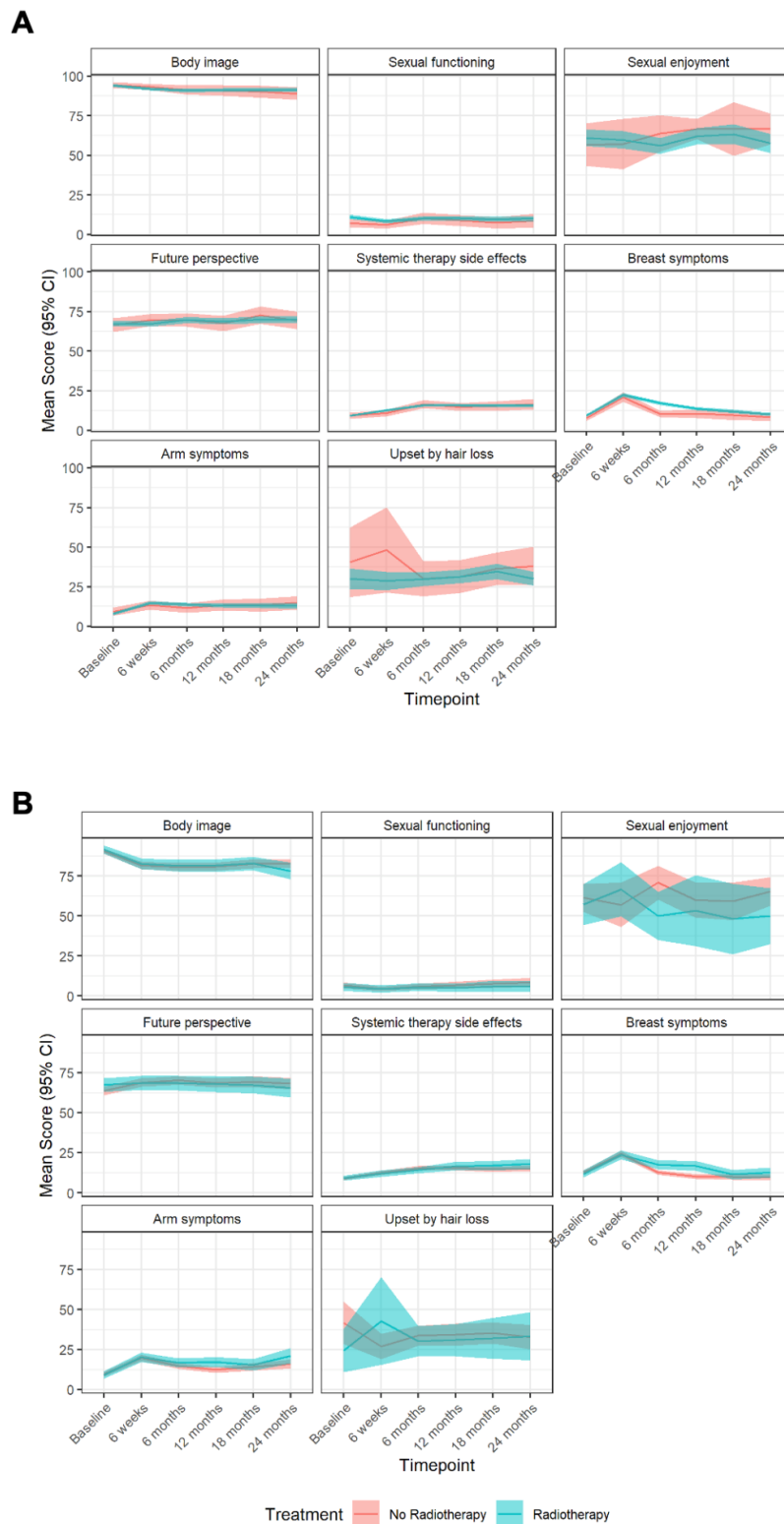
| | | | |
|--------------|--------------------|--------------------|----------------------|
| Frail | 1 (100.0%) | 0 (0.0%) | 1 (100.0%) |
| Total | 341 (31.4%) | 746 (68.6%) | 1087 (100.0%) |

Table 3d - Use of radiotherapy after mastectomy by combined risk of recurrence and fitness.

| Fitness | Higher risk | | Lower risk | | Total |
|-------------------|---------------------|------------------------|---------------------|------------------------|---------------|
| | Radiotherapy | No Radiotherapy | Radiotherapy | No Radiotherapy | |
| Fit | 185 (24.2%) | 156 (20.4%) | 57 (7.4%) | 368 (48.0%) | 766 (100.0%) |
| Vulnerable | 70 (21.88%) | 68 (21.25%) | 28 (8.75%) | 154 (48.12%) | 320 (100.00%) |
| Frail | 0 (0.0%) | 0 (0.0%) | 1 (100%) | 0 (0.0%) | 1 (100%) |
| Total | 255 (23.5%) | 224 (20.6%) | 86 (7.9%) | 522 (48.0%) | 1087 (100.0%) |

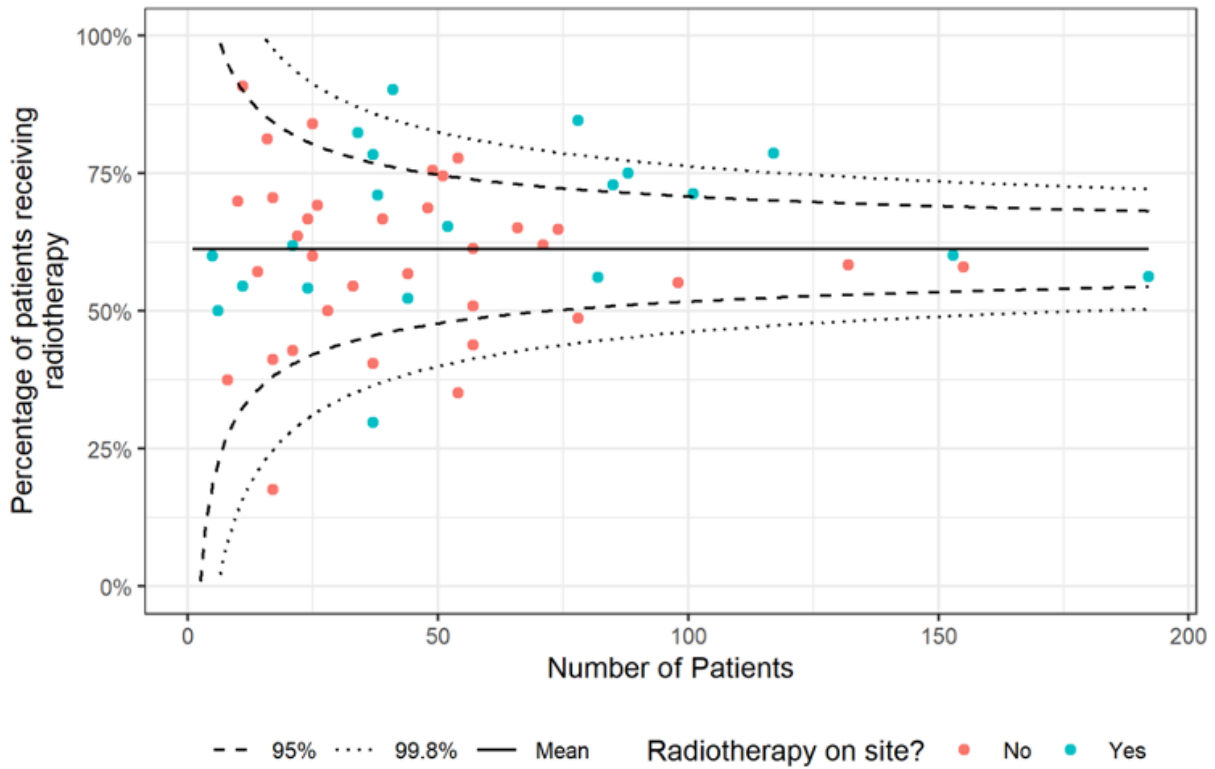
**Risk of recurrence and fitness defined as shown in Supplementary Table 3.*

Figure 2 – Mean (95% CI) scores over time points for the radiotherapy versus no radiotherapy population measured on the EORTC-QLQ-BR23 in patients undergoing breast-conserving surgery (A) and a mastectomy (B).*



*A high score for a functional scale represents a high/healthy level of functioning; a high score for the global health status/QoL represents a high QoL, whilst a high score for a symptom scale represents a high level of symptomology/problems.

Figure 3 – Funnel plot of radiotherapy use by site (N=56). Proportion of patients enrolled in cohort study receiving radiotherapy against number of patients enrolled.



Supplementary materials

Supplementary Table 1 - List of participating sites.

| | Site Name | Local PI |
|----|------------------------|-------------------------------------------------|
| 1 | Sheffield | Lynda Wyld and Matt Winter |
| 2 | Barnsley | Julia Dicks |
| 3 | Doncaster | Clare Rogers |
| 4 | Milton Keynes | Amanda Taylor |
| 5 | Scunthorpe and Grimsby | Rajesh Vijn (Scunthorpe), Jenny Smith (Grimsby) |
| 6 | Leicester | Monika Kaushik |
| 7 | Derby | Kwok Leung Cheung |
| 8 | East Lancashire | Julie Iddon |
| 9 | Harrogate | Matthew Adelekan |
| 10 | St Helens and Knowsley | Riccardo Audisio |
| 11 | York | Rana Nasr (York and Scarborough) |

| | | |
|----|----------------------------|--------------------------------------------------------|
| 12 | Liverpool | Chris Holcombe |
| 13 | Airedale | Claire Murphy |
| 14 | Leeds | Kieran Horgan |
| 15 | Bradford | Rick Linforth |
| 16 | Cardiff | Helen Sweetland |
| 17 | Aneurin Bevan Health Board | Simon Waters (Royal Gwent), Theresa Howe (Nevill Hall) |
| 18 | Royal Lancaster | Rishi Parmeshwar |
| 19 | Coventry | Abigail Tomlins |
| 20 | Grantham | Anzors Gvaramadze |
| 21 | Lincoln | Anzors Gvaramadze |
| 22 | Pilgrim | Anzors Gvaramadze |
| 23 | Hull | Peter Kneeshaw |
| 24 | Nottingham | Lisa Whisker |
| 25 | Southport | Anwar Haq |
| 26 | Leighton | Vanessa Pope |
| 27 | Royal Marsden | Jenny Rusby |
| 28 | Cheltenham General | Sarah Vestey |
| 29 | Guys and St Thomas | Michael Douek |
| 30 | Dorset County | Caroline Osborne |
| 31 | Mid Essex | Sascha Miles-Dua |
| 32 | Mid Yorkshire | Jay Naik |
| 33 | Bristol | Zoe Winters |
| 34 | Chesterfield | Iman Azmy |
| 35 | Rotherham | Inder Kumar |
| 36 | Darent Valley | Seema Seetharam |
| 37 | Kingston | Karyn Shenton |
| 38 | Colchester | Mukesh Mukesh |
| 39 | Yeovil | Caroline Osborne |
| 40 | Croydon | Sanjay Joshi |
| 41 | North Tees | Colm Hennessy |
| 42 | South Tees | Imtiaz Cheema |
| 43 | Luton and Dunstable | Mei-Lin Ah-See |
| 44 | Weston General | Rachel Ainsworth |

| | | |
|-----------|-------------------------------|--------------------------------------------|
| 45 | Tameside | Stephanie Ridgway |
| 46 | Macclesfield | Lisa Barraclough |
| 47 | Wrightington, Wigan and Leigh | Angela Power |
| 48 | Birmingham | Fiona Hoar |
| 49 | Kings Mill | Rebecca Boulton |
| 50 | Wythenshawe | Nigel Bundred |
| 51 | Aintree | Peter Robson |
| 52 | Brighton | Gargi Patel |
| 53 | St Margaret's | Ashraf Patel |
| 54 | St Marys | Steve Parker |
| 55 | Oxford | Asha Adwani |
| 56 | Frimley and Wexham | Ruth Davis (Wexham), Raouf Daoud (Frimley) |

Supplementary Table 2 – Summary of the Quality-of-Life instruments used in the Age Gap study and their meaning.

| Instrument | Question number | Domain number | Domains | No. items | Score positive or negative | |
|----------------------------------------------|------------------------|--------------------------------|----------------------------------|------------------|--------------------------------------------|--------------------------------------------|
| Generic cancer EORTC QLQ C30 | 30 | 2 visual analogue scales, | Health status | 1 | High score means higher level of function | |
| | | | Quality of life | 1 | | |
| | | 5 multi-item functional scales | Physical | 5 | | |
| | | | Role | 2 | | |
| | | | Emotional | 4 | | |
| | | | Cognitive | 2 | | |
| | | | Social | 2 | | |
| | | 9 symptom scales | Fatigue | 3 | | Higher score means higher symptom severity |
| | | | Nausea and vomiting | 2 | | |
| | | | Pain | 2 | | |
| | | | Dyspnoea | 1 | | |
| | | | Insomnia | 1 | | |
| | | | Appetite loss | 1 | | |
| | | | Constipation | 1 | | |
| Diarrhoea | 1 | | | | | |
| Financial difficulties | 1 | | | | | |
| Breast cancer specific EORTC QLQ BR23 | 23 | 5 multi-item scales | Body image | 4 | High score means higher level of function | |
| | | | Sexual function | 2 | | |
| | | | Sexual enjoyment | 1 | | |
| | | | Future perspectives | 1 | | |
| | | 4 single item symptom scales | Systemic therapy side effects | 7 | Higher score means higher symptom severity | |
| | | | Breast symptoms | 4 | | |
| | | | Arm symptoms | 3 | | |
| | | | Upset by hair loss | 1 | | |
| Older person specific EORTC ELD-14 | 14 | 2 functional scales | Family support | 2 | High score means higher level of function | |
| | | | Maintaining autonomy and purpose | 2 | | |
| | | 3 symptom scales | Mobility | 3 | Higher score means higher symptom severity | |
| | | | Future worries | 5 | | |
| | | | Burden of illness | 2 | | |

| | | | | | |
|------------------------|--------------------------------|------------------------------|------------------|----------------------------------------------------|-------------------------------------------------------------------------|
| Generic EQ5D-5L | 5 plus a visual analogue scale | 3 functional scales | Mobility | 5 | All scored from 1-5 with score of 1 being the best outcome, 5 the worst |
| | | | Self-care | 5 | |
| | | | Usual activities | 5 | |
| | 2 symptom scales | Pain/discomfort | 5 | | |
| | | Anxiety/depression | 5 | | |
| | 1 visual analogue scale | How good/bad is health today | 1 | Scored 1-100 with 100 meaning best health possible | |

Supplementary Table 3 – Definitions of risk of recurrence and fitness.

Supplementary Table 3a – Definition of risk of recurrence categories.

| Tumour characteristics | Risk of recurrence | |
|---------------------------------|--------------------|----------|
| | High* | Low |
| BREAST CONSERVING COHORT | | |
| Tumour size | ≥3cm | <3cm |
| ER | Negative | Positive |
| HER2 | Positive | Negative |
| Grade | 3 | 1-2 |
| Nodal involvement | Yes | No |
| MASTECTOMY COHORT | | |
| Tumour size | ≥5cm | <5cm |
| Lymph nodes involved | ≥4 | <4 |

**high risk is defined by the presence of ≥1 of the features enlisted.*

Supplementary Table 3b – Definition of fitness categories. Overall scores: Fit: 0-2; Vulnerable: 3-8. Frail: ≥9.

| Domain | Range | Score | | |
|------------------------------------------------------|-------|-------|-------|-----|
| | | 0 | 1 | 2 |
| ECOG PS | 0-4 | 0-1 | 2 | 3-4 |
| ADL | 0-10 | 20 | 19 | ≤18 |
| IADL | 0-8 | 8 | 7 | ≤6 |
| Charlson comorbidity index | - | 0-1 | - | ≥2 |
| Prescribed medications (excluding vitamins/minerals) | - | ≤3 | ≥4 | - |
| APSGA | | 0-3 | 4-8 | ≥9 |
| MMSE | 0-30 | ≥24 | 20-24 | <20 |

Supplementary Table 4 - Postoperative tumour, patient and treatment characteristics by receipt of radiotherapy.

| | | No radiotherapy N = 1058 | Radiotherapy N = 1753 | Total N = 2811 |
|----------------------------|---------------------------|--------------------------------|--------------------------|-------------------|
| Age (years) | 70-74 | 374 (35.3%) | 799 (45.6%) | 1173 (41.7%) |
| | 75-79 | 318 (30.1%) | 581 (33.1%) | 899 (32.0%) |
| | 80-84 | 225 (21.3%) | 281 (16.1%) | 506 (18.0%) |
| | ≥85 | 141 (13.3%) | 92 (5.2%) | 233 (8.3%) |
| Participation level | Full | 784 (74.1%) | 1327 (75.7%) | 2111 (75.1%) |
| | Partial | 232 (21.9%) | 389 (22.2%) | 621 (22.1%) |
| | Consultee | 42 (4.0%) | 37 (2.1%) | 79 (2.8%) |
| Main side | Right | 487 (46.0%) | 818 (46.7%) | 1305 (46.4%) |
| | Left | 571 (54.0%) | 935 (53.3%) | 1506 (53.6%) |
| Tumour size (mm) | ≤ 20 | 432 (40.8%) | 847 (48.3%) | 1279 (45.5%) |
| | 21-50 | 530 (50.1%) | 755 (43.1%) | 1285 (45.7%) |
| | > 50 | 66 (6.2%) | 122 (7.0%) | 188 (6.7%) |
| | Unknown | 30 (2.8%) | 29 (1.7%) | 59 (2.1%) |
| Nodal status | pN0 | 764 (72.2%) | 1149 (65.5%) | 1913 (68.1%) |
| | pN1 | 204 (19.3%) | 408 (23.3%) | 612 (21.8%) |
| | pN2 | 36 (3.4%) | 111 (6.3%) | 147 (5.2%) |
| | pN3 | 21 (2.0%) | 56 (3.2%) | 77 (2.7%) |
| | Unknown | 33 (3.1%) | 29 (1.7%) | 62 (2.2%) |
| Grade | Grade 1 | 147 (13.9%) | 234 (13.3%) | 381 (13.6%) |
| | Grade 2 | 540 (51.0%) | 945 (53.9%) | 1485 (52.8%) |
| | Grade 3 | 331 (31.3%) | 534 (30.5%) | 865 (30.8%) |
| | Unknown | 40 (3.8%) | 40 (2.3%) | 80 (2.8%) |
| Histology | Ductal carcinoma | 685 (64.7%) | 1130 (64.5%) | 1815 (64.6%) |
| | Lobular carcinoma | 143 (13.5%) | 232 (13.2%) | 375 (13.3%) |
| | Tubular carcinoma | 5 (0.5%) | 24 (1.4%) | 29 (1.0%) |
| | Mucinous carcinoma | 34 (3.2%) | 37 (2.1%) | 71 (2.5%) |
| | Other | 107 (10.1%) | 159 (9.1%) | 266 (9.5%) |
| | Unknown | 84 (7.9%) | 171 (9.8%) | 255 (9.1%) |
| ER status | Negative | 166 (15.7%) | 206 (11.8%) | 372 (13.2%) |

| | No radiotherapy N = 1058 | Radiotherapy N = 1753 | Total N = 2811 | |
|--------------------------------|---------------------------------------|------------------------------|-----------------------|--------------|
| | Positive | 844 (79.8%) | 1510 (86.1%) | 2354 (83.7%) |
| | Unknown | 48 (4.5%) | 37 (2.1%) | 85 (3.0%) |
| HER2 status | Negative | 816 (77.1%) | 1456 (83.1%) | 2272 (80.8%) |
| | Inconclusive | 9 (0.9%) | 13 (0.7%) | 22 (0.8%) |
| | Positive | 153 (14.5%) | 179 (10.2%) | 332 (11.8%) |
| | Unknown | 80 (7.6%) | 105 (6.0%) | 185 (6.6%) |
| ADL category | No dependency | 729 (68.9%) | 1275 (72.7%) | 2004 (71.3%) |
| | Mild dependency | 125 (11.8%) | 183 (10.4%) | 308 (11.0%) |
| | Moderate/severe dependency | 120 (11.3%) | 158 (9.0%) | 278 (9.9%) |
| | Unknown | 84 (7.9%) | 137 (7.8%) | 221 (7.9%) |
| IADL category | No dependency | 739 (69.8%) | 1330 (75.9%) | 2069 (73.6%) |
| | Mild dependency | 104 (9.8%) | 145 (8.3%) | 249 (8.9%) |
| | Moderate/severe dependency | 126 (11.9%) | 132 (7.5%) | 258 (9.2%) |
| | Unknown | 89 (8.4%) | 146 (8.3%) | 235 (8.4%) |
| MMSE category | Normal function | 907 (85.7%) | 1587 (90.5%) | 2494 (88.7%) |
| | Mild impairment | 112 (10.6%) | 136 (7.8%) | 248 (8.8%) |
| | Moderate impairment | 15 (1.4%) | 21 (1.2%) | 36 (1.3%) |
| | Severe impairment | 24 (2.3%) | 9 (0.5%) | 33 (1.2%) |
| AGP SGA category | Low | 805 (76.1%) | 1375 (78.4%) | 2180 (77.6%) |
| | Moderate | 122 (11.5%) | 166 (9.5%) | 288 (10.2%) |
| | High | 12 (1.1%) | 28 (1.6%) | 40 (1.4%) |
| | Unknown | 119 (11.2%) | 184 (10.5%) | 303 (10.8%) |
| ECOG performance status | 0 | 675 (63.8%) | 1269 (72.4%) | 1944 (69.2%) |
| | 1 | 270 (25.5%) | 337 (19.2%) | 607 (21.6%) |
| | 2 | 42 (4.0%) | 38 (2.2%) | 80 (2.8%) |
| | 3 | 18 (1.7%) | 18 (1.0%) | 36 (1.3%) |
| | 4 | 1 (0.1%) | 0 (0.0%) | 1 (0.0%) |
| | Unknown | 52 (4.9%) | 91 (5.2%) | 143 (5.1%) |
| | n | 1021 | 1686 | 2707 |

| | | No radiotherapy N = 1058 | Radiotherapy N = 1753 | Total N = 2811 |
|--------------------------------------------|-------------------------------------|------------------------------------|------------------------------|-----------------------|
| Charlson comorbidity index (no age) | Mean (SD) | 1.06 (1.29) | 1.02 (1.31) | 1.03 (1.30) |
| | Median (IQR) | 1.00 (0.00, 2.00) | 0.00 (0.00, 2.00) | 1.00 (0.00, 2.00) |
| | Min, Max | 0, 9 | 0, 9 | 0, 9 |
| Number of concurrent medications | n | 926 | 1520 | 2446 |
| | Mean (SD) | 4.12 (2.70) | 4.03 (2.60) | 4.06 (2.64) |
| | Median (IQR) | 4.00 (2.00, 6.00) | 4.00 (2.00, 5.00) | 4.00 (2.00, 5.75) |
| | Min, Max | 0, 18 | 0, 15 | 0, 18 |
| Breast surgery | Breast conserving surgery | 284 (26.8%) | 1385 (79.1%) | 1669 (59.4%) |
| | Mastectomy | 746 (70.5%) | 341 (19.4%) | 1087 (38.7%) |
| | Unknown | 28 (2.7%) | 27 (1.5%) | 55 (1.9%) |
| Axillary surgery | Axillary sample | 32 (3.0%) | 56 (3.2%) | 88 (3.1%) |
| | Axillary clearance | 166 (15.7%) | 248 (14.1%) | 414 (14.7%) |
| | Sentinel lymph node biopsy | 724 (68.4%) | 1256 (71.6%) | 1980 (70.4%) |
| | Internal mammary node biopsy | 0 (0.0%) | 1 (0.1%) | 1 (0.0%) |
| | No axillary surgery | 55 (5.2%) | 25 (1.4%) | 80 (2.8%) |
| | Unknown | 81 (7.7%) | 167 (9.5%) | 248 (8.8%) |
| Chemotherapy | Chemotherapy | 146 (13.8%) | 251 (14.3%) | 397 (14.1%) |
| | No Chemotherapy | 912 (86.2%) | 1502 (85.7%) | 2414 (85.9%) |

Supplementary Table 5 - Postoperative tumour, patient and treatment characteristics by age.

| | | 70-74 | 75-79 | 80-84 | >=85 | Total |
|----------------------------|--------------------------|----------------------------|----------------------------|----------------------------|----------------------------|----------------------------|
| | | N = 1173 | N = 899 | N = 506 | N = 233 | N = 2811 |
| Participation level | Full | 926 (78.9%) | 674 (75.0%) | 368 (72.7%) | 143 (61.4%) | 2111 (75.1%) |
| | Partial | 225 (19.2%) | 209 (23.2%) | 123 (24.3%) | 64 (27.5%) | 621 (22.1%) |
| | Consultee | 22 (1.9%) | 16 (1.8%) | 15 (3.0%) | 26 (11.2%) | 79 (2.8%) |
| Main side | Right | 535 (45.6%) | 418 (46.5%) | 247 (48.8%) | 105 (45.1%) | 1305 (46.4%) |
| | Left | 638 (54.4%) | 481 (53.5%) | 259 (51.2%) | 128 (54.9%) | 1506 (53.6%) |
| Tumour size (mm) | ≤ 20 | 649 (55.3%) | 371 (41.3%) | 184 (36.4%) | 75 (32.2%) | 1279 (45.5%) |
| | 21-50 | 439 (37.4%) | 439 (48.8%) | 271 (53.6%) | 136 (58.4%) | 1285 (45.7%) |
| | > 50 | 66 (5.6%) | 66 (7.3%) | 40 (7.9%) | 16 (6.9%) | 188 (6.7%) |
| | Unknown | 19 (1.6%) | 23 (2.6%) | 11 (2.2%) | 6 (2.6%) | 59 (2.1%) |
| Tumour size (mm) | N | 1154 | 876 | 495 | 227 | 2752 |
| | Mean (SD) | 23.07 (17.68) | 26.53 (16.19) | 27.55 (15.40) | 28.75 (15.74) | 25.45 (16.79) |
| | Median (IQR) | 19.00 (12.00, 28.00) | 22.00 (16.00, 32.00) | 25.00 (17.00, 35.00) | 25.00 (19.00, 35.00) | 21.00 (15.00, 31.00) |
| | Min, Max | 0, 210 | 0, 155 | 0, 120 | 7, 120 | 0, 210 |
| Nodal involvement | pN0 | 867 (73.9%) | 573 (63.7%) | 326 (64.4%) | 147 (63.1%) | 1913 (68.1%) |
| | pN1 | 212 (18.1%) | 223 (24.8%) | 117 (23.1%) | 60 (25.8%) | 612 (21.8%) |
| | pN2 | 46 (3.9%) | 54 (6.0%) | 36 (7.1%) | 11 (4.7%) | 147 (5.2%) |
| | pN3 | 29 (2.5%) | 24 (2.7%) | 16 (3.2%) | 8 (3.4%) | 77 (2.7%) |
| | Unknown | 19 (1.6%) | 25 (2.8%) | 11 (2.2%) | 7 (3.0%) | 62 (2.2%) |
| Grade | 1 | 199 (17.0%) | 110 (12.2%) | 47 (9.3%) | 25 (10.7%) | 381 (13.6%) |
| | 2 | 635 (54.1%) | 482 (53.6%) | 255 (50.4%) | 113 (48.5%) | 1485 (52.8%) |
| | 3 | 311 (26.5%) | 278 (30.9%) | 190 (37.5%) | 86 (36.9%) | 865 (30.8%) |
| | Unknown | 28 (2.4%) | 29 (3.2%) | 14 (2.8%) | 9 (3.9%) | 80 (2.8%) |
| Histology | Ductal carcinoma | 761 (64.9%) | 567 (63.1%) | 341 (67.4%) | 146 (62.7%) | 1815 (64.6%) |
| | Lobular carcinoma | 164 (14.0%) | 128 (14.2%) | 58 (11.5%) | 25 (10.7%) | 375 (13.3%) |
| | Tubular carcinoma | 21 (1.8%) | 5 (0.6%) | 3 (0.6%) | 0 (0.0%) | 29 (1.0%) |

| | 70-74 | 75-79 | 80-84 | >=85 | Total | |
|-------------------------|-----------------------------------|----------------|----------------|----------------|-----------------|--------------|
| | N = 1173 | N = 899 | N = 506 | N = 233 | N = 2811 | |
| | Mucinous carcinoma | 18 (1.5%) | 28 (3.1%) | 12 (2.4%) | 13 (5.6%) | 71 (2.5%) |
| | Other | 110 (9.4%) | 83 (9.2%) | 53 (10.5%) | 20 (8.6%) | 266 (9.5%) |
| | Unknown | 99 (8.4%) | 88 (9.8%) | 39 (7.7%) | 29 (12.4%) | 255 (9.1%) |
| ER status | Negative | 141 (12.0%) | 117 (13.0%) | 74 (14.6%) | 40 (17.2%) | 372 (13.2%) |
| | Positive | 1002 (85.4%) | 753 (83.8%) | 414 (81.8%) | 185 (79.4%) | 2354 (83.7%) |
| | Unknown | 30 (2.6%) | 29 (3.2%) | 18 (3.6%) | 8 (3.4%) | 85 (3.0%) |
| HER2 status | Negative | 981 (83.6%) | 724 (80.5%) | 375 (74.1%) | 192 (82.4%) | 2272 (80.8%) |
| | Positive | 136 (11.6%) | 115 (12.8%) | 63 (12.5%) | 18 (7.7%) | 332 (11.8%) |
| | Inconclusive | 9 (0.8%) | 7 (0.8%) | 4 (0.8%) | 2 (0.9%) | 22 (0.8%) |
| | Unknown | 47 (4.0%) | 53 (5.9%) | 64 (12.6%) | 21 (9.0%) | 185 (6.6%) |
| ADL category | No dependency | 924 (78.8%) | 623 (69.3%) | 331 (65.4%) | 126 (54.1%) | 2004 (71.3%) |
| | Mild dependency | 89 (7.6%) | 109 (12.1%) | 67 (13.2%) | 43 (18.5%) | 308 (11.0%) |
| | Moderate/severe dependency | 70 (6.0%) | 101 (11.2%) | 60 (11.9%) | 47 (20.2%) | 278 (9.9%) |
| | Unknown | 90 (7.7%) | 66 (7.3%) | 48 (9.5%) | 17 (7.3%) | 221 (7.9%) |
| IADL category | No dependency | 955 (81.4%) | 679 (75.5%) | 332 (65.6%) | 103 (44.2%) | 2069 (73.6%) |
| | Mild dependency | 54 (4.6%) | 78 (8.7%) | 70 (13.8%) | 47 (20.2%) | 249 (8.9%) |
| | Moderate/severe dependency | 67 (5.7%) | 70 (7.8%) | 55 (10.9%) | 66 (28.3%) | 258 (9.2%) |
| | Unknown | 97 (8.3%) | 72 (8.0%) | 49 (9.7%) | 17 (7.3%) | 235 (8.4%) |
| MMSE category | Normal function | 1059 (90.3%) | 805 (89.5%) | 444 (87.7%) | 186 (79.8%) | 2494 (88.7%) |
| | Mild impairment | 91 (7.8%) | 74 (8.2%) | 50 (9.9%) | 33 (14.2%) | 248 (8.8%) |
| | Moderate impairment | 11 (0.9%) | 12 (1.3%) | 5 (1.0%) | 8 (3.4%) | 36 (1.3%) |
| | Severe | 12 (1.0%) | 8 (0.9%) | 7 (1.4%) | 6 (2.6%) | 33 (1.2%) |
| AGP SGA category | Low | 929 (79.2%) | 709 (78.9%) | 370 (73.1%) | 172 (73.8%) | 2180 (77.6%) |
| | Moderate | 111 (9.5%) | 88 (9.8%) | 62 (12.3%) | 27 (11.6%) | 288 (10.2%) |
| | High | 15 (1.3%) | 13 (1.4%) | 10 (2.0%) | 2 (0.9%) | 40 (1.4%) |
| | Unknown | 118 (10.1%) | 89 (9.9%) | 64 (12.6%) | 32 (13.7%) | 303 (10.8%) |

| | | 70-74 | 75-79 | 80-84 | >=85 | Total |
|--------------------------------------------|-------------------------------------|-------------------|-------------------|-------------------|-------------------|-------------------|
| | | N = 1173 | N = 899 | N = 506 | N = 233 | N = 2811 |
| ECOG performance status | 0 | 930 (79.3%) | 619 (68.9%) | 305 (60.3%) | 90 (38.6%) | 1944 (69.2%) |
| | 1 | 151 (12.9%) | 205 (22.8%) | 142 (28.1%) | 109 (46.8%) | 607 (21.6%) |
| | 2 | 21 (1.8%) | 24 (2.7%) | 23 (4.5%) | 12 (5.2%) | 80 (2.8%) |
| | 3 | 10 (0.9%) | 9 (1.0%) | 8 (1.6%) | 9 (3.9%) | 36 (1.3%) |
| | 4 | 1 (0.1%) | 0 (0.0%) | 0 (0.0%) | 0 (0.0%) | 1 (0.0%) |
| | Unknown | 60 (5.1%) | 42 (4.7%) | 28 (5.5%) | 13 (5.6%) | 143 (5.1%) |
| Charlson comorbidity index (no age) | N | 1133 | 869 | 481 | 224 | 2707 |
| | Mean (SD) | 0.90 (1.21) | 1.10 (1.36) | 1.19 (1.37) | 1.09 (1.30) | 1.03 (1.30) |
| | Median (IQR) | 0.00 (0.00, 2.00) | 1.00 (0.00, 2.00) | 1.00 (0.00, 2.00) | 1.00 (0.00, 2.00) | 1.00 (0.00, 2.00) |
| | Min, Max | 0, 6 | 0, 9 | 0, 9 | 0, 6 | 0, 9 |
| Number of concurrent medications | N | 973 | 801 | 462 | 210 | 2446 |
| | Mean (SD) | 3.85 (2.66) | 4.16 (2.63) | 4.26 (2.63) | 4.21 (2.53) | 4.06 (2.64) |
| | Median (IQR) | 3.00 (2.00, 5.00) | 4.00 (2.00, 6.00) | 4.00 (2.00, 6.00) | 4.00 (2.00, 6.00) | 4.00 (2.00, 5.75) |
| | Min, Max | 0, 14 | 0, 18 | 0, 14 | 0, 14 | 0, 18 |
| Surgery type | Mastectomy | 342 (29.2%) | 356 (39.6%) | 253 (50.0%) | 136 (58.4%) | 1087 (38.7%) |
| | Breast conservation | 813 (69.3%) | 521 (58.0%) | 243 (48.0%) | 92 (39.5%) | 1669 (59.4%) |
| | Unknown | 18 (1.5%) | 22 (2.4%) | 10 (2.0%) | 5 (2.1%) | 55 (2.0%) |
| Axillary surgery | Axillary sampling | 38 (3.2%) | 30 (3.3%) | 11 (2.2%) | 9 (3.9%) | 88 (3.1%) |
| | Axillary clearance | 134 (11.4%) | 134 (14.9%) | 99 (19.6%) | 47 (20.2%) | 414 (14.7%) |
| | Sentinel lymph node biopsy | 881 (75.1%) | 633 (70.4%) | 336 (66.4%) | 130 (55.8%) | 1980 (70.4%) |
| | Internal mammary node biopsy | 0 (0.0%) | 1 (0.1%) | 0 (0.0%) | 0 (0.0%) | 1 (0.0%) |
| | No axillary surgery | 23 (2.0%) | 16 (1.8%) | 22 (4.3%) | 19 (8.2%) | 80 (2.8%) |
| | Unknown | 97 (8.3%) | 85 (9.5%) | 38 (7.5%) | 28 (12.0%) | 248 (8.8%) |
| Chemotherapy use | Yes | 256 (21.8%) | 120 (13.3%) | 20 (4.0%) | 1 (0.4%) | 397 (14.1%) |
| | No | 917 (78.2%) | 779 (86.7%) | 486 (96.0%) | 232 (99.6%) | 2414 (85.9%) |
| Radiotherapy use | Yes | 799 (68.1%) | 581 (64.6%) | 281 (55.5%) | 92 (39.5%) | 1753 (62.4%) |

| | 70-74 | 75-79 | 80-84 | >=85 | Total |
|----|-------------|-------------|-------------|-------------|-----------------|
| | N = 1173 | N = 899 | N = 506 | N = 233 | N = 2811 |
| No | 374 (31.9%) | 318 (35.4%) | 225 (44.5%) | 141 (60.5%) | 1058 (37.6%) |

Supplementary Table 6 – Radiotherapy details by treatment side for all women whose primary treatment was breast conserving surgery.

| BREAST CONSERVING SURGERY COHORT | | | | | |
|----------------------------------|--------------|----------------------|--|----------------------|--|
| | | Left | | Right | |
| | | N = 741 | | N = 666 | |
| Breast | | 733 (98.9%) | | 663 (99.5%) | |
| Breast fractions | n | 728 | | 658 | |
| | Mean (SD) | 14.99 (2.39) | | 14.99 (2.74) | |
| | Median (IQR) | 15.00 (15.00, 15.00) | | 15.00 (15.00, 15.00) | |
| | Min, Max | 1, 40 | | 1, 40 | |
| Axilla | Ticked | 38 (5.1%) | | 24 (3.6%) | |
| Axilla fractions | n | 37 | | 24 | |
| | Mean (SD) | 14.54 (2.73) | | 14.08 (3.16) | |
| | Median (IQR) | 15.00 (15.00, 15.00) | | 15.00 (15.00, 15.00) | |
| | Min, Max | 5, 20 | | 2, 15 | |
| Supraclavicular fossa | | 54 (7.3%) | | 38 (5.7%) | |
| Supraclavicular fossa fractions | n | 53 | | 37 | |
| | Mean (SD) | 14.81 (2.54) | | 14.35 (2.57) | |
| | Median (IQR) | 15.00 (15.00, 15.00) | | 15.00 (15.00, 15.00) | |
| | Min, Max | 5, 25 | | 2, 15 | |
| Chest wall | | 6 (0.8%) | | 5 (0.8%) | |
| Chest wall fractions | n | 5 | | 5 | |
| | Mean (SD) | 11.00 (5.48) | | 11.00 (5.48) | |
| | Median (IQR) | 15.00 (5.00, 15.00) | | 15.00 (5.00, 15.00) | |
| | Min, Max | 5, 15 | | 5, 15 | |
| Other | | 18 (2.4%) | | 15 (2.3%) | |
| Other fractions | n | 18 | | 15 | |
| | Mean (SD) | 6.78 (3.66) | | 7.20 (3.55) | |
| | Median (IQR) | 5.00 (5.00, 7.25) | | 5.00 (5.00, 8.00) | |
| | Min, Max | 3, 16 | | 3, 15 | |

| MASTECTOMY COHORT | | | |
|----------------------------------------|---------------------|----------------------|----------------------|
| | | Left | Right |
| | | N = 192 | N = 148 |
| Breast | | 48 (25.0%) | 43 (29.1%) |
| Breast fractions* | n | 48 | 43 |
| | Mean (SD) | 15.33 (1.23) | 15.58 (2.49) |
| | Median (IQR) | 15.00 (15.00, 15.00) | 15.00 (15.00, 15.00) |
| | Min, Max | 15, 20 | 15, 30 |
| Axilla | Ticked | 41 (21.4%) | 27 (18.2%) |
| Axilla fractions | n | 41 | 27 |
| | Mean (SD) | 15.51 (1.87) | 15.52 (2.14) |
| | Median (IQR) | 15.00 (15.00, 15.00) | 15.00 (15.00, 15.00) |
| | Min, Max | 15, 25 | 14, 25 |
| Supraclavicular fossa | | 83 (43.2%) | 70 (47.3%) |
| Supraclavicular fossa fractions | n | 83 | 67 |
| | Mean (SD) | 15.31 (2.57) | 15.51 (1.78) |
| | Median (IQR) | 15.00 (15.00, 15.00) | 15.00 (15.00, 15.00) |
| | Min, Max | 4, 25 | 14, 25 |
| Chest wall | | 145 (75.5%) | 102 (68.9%) |
| Chest wall fractions | n | 145 | 100 |
| | Mean (SD) | 15.14 (2.60) | 15.35 (2.24) |
| | Median (IQR) | 15.00 (15.00, 15.00) | 15.00 (15.00, 15.00) |
| | Min, Max | 2, 30 | 5, 25 |
| Other | | 6 (3.1%) | 6 (4.1%) |
| Other fractions | n | 6 | 6 |
| | Mean (SD) | 15.67 (6.98) | 15.00 (6.32) |
| | Median (IQR) | 15.00 (15.00, 18.75) | 15.00 (15.00, 15.00) |
| | Min, Max | 4, 25 | 5, 25 |

**This category in the mastectomy cohort includes radiotherapy given to contralateral breast for patients with bilateral breast cancer.*

Supplementary Table 7 – Radiotherapy use by site.

| Site ID | Availability of radiotherapy on site | n/N (%) |
|----------------|---------------------------------------------|----------------|
| 1 | No | 10/11 (90.9%) |
| 2 | Yes | 37/41 (90.2%) |

| Site ID | Availability of radiotherapy on site | n/N (%) |
|---------|--------------------------------------|----------------|
| 3 | Yes | 66/78 (84.6%) |
| 4 | No | 21/25 (84.0%) |
| 5 | Yes | 28/34 (82.4%) |
| 6 | No | 13/16 (81.2%) |
| 7 | Yes | 92/117 (78.6%) |
| 8 | Yes | 29/37 (78.4%) |
| 9 | No | 42/54 (77.8%) |
| 10 | No | 37/49 (75.5%) |
| 11 | Yes | 66/88 (75.0%) |
| 12 | No | 38/51 (74.5%) |
| 13 | Yes | 62/85 (72.9%) |
| 14 | Yes | 72/101 (71.3%) |
| 15 | Yes | 27/38 (71.1%) |
| 16 | No | 12/17 (70.6%) |
| 17 | No | 7/10 (70.0%) |
| 18 | No | 18/26 (69.2%) |
| 19 | No | 33/48 (68.8%) |
| 20 | No | 16/24 (66.7%) |
| 21 | No | 26/39 (66.7%) |
| 22 | No | 34/52 (65.4%) |
| 23 | No | 43/66 (65.2%) |
| 24 | No | 48/74 (64.9%) |
| 25 | No | 14/22 (63.6%) |
| 26 | No | 44/71 (62.0%) |
| 27 | Yes | 13/21 (61.9%) |
| 28 | No | 35/57 (61.4%) |
| 29 | Yes | 92/153 (60.1%) |
| 30 | No | 15/25 (60.0%) |
| 31 | Yes | 3/5 (60.0%) |
| 32 | No | 77/132 (58.3%) |
| 33 | No | 90/155 (58.1%) |
| 34 | No | 8/14 (57.1%) |

| Site ID | Availability of radiotherapy on site | n/N (%) |
|---------|--------------------------------------|-----------------|
| 35 | No | 25/44 (56.8%) |
| 36 | Yes | 108/192 (56.2%) |
| 37 | Yes | 46/82 (56.1%) |
| 38 | No | 54/98 (55.1%) |
| 39 | No | 18/33 (54.5%) |
| 40 | Yes | 6/11 (54.5%) |
| 41 | Yes | 13/24 (54.2%) |
| 42 | Yes | 13/24 (54.2%) |
| 43 | Yes | 23/44 (52.3%) |
| 44 | No | 29/57 (50.9%) |
| 45 | No | 3/6 (50.0%) |
| 46 | Yes | 3/6 (50.0%) |
| 47 | No | 14/28 (50.0%) |
| 48 | No | 38/78 (48.7%) |
| 49 | No | 25/57 (43.9%) |
| 50 | No | 9/21 (42.9%) |
| 51 | No | 7/17 (41.2%) |
| 52 | No | 15/37 (40.5%) |
| 53 | No | 3/8 (37.5%) |
| 54 | No | 19/54 (35.2%) |
| 55 | Yes | 11/37 (29.7%) |
| 56 | No | 3/17 (17.6%) |

Supplementary Table 8 – Completion of the QoL questionnaires at each time point for patients undergoing BCS or mastectomy.

| | | BREAST CONSERVING SURGERY COHORT | | |
|-----------------------|-------------|----------------------------------|--------------|--------------|
| | | No radiotherapy | Radiotherapy | Total |
| | | N = 210 | N = 915 | N = 1125 |
| EORTC-QLQ-C30 | | | | |
| Baseline | All | 181 (86.2%) | 823 (89.9%) | 1004 (89.2%) |
| | Some | 8 (3.8%) | 40 (4.4%) | 48 (4.3%) |
| | None | 21 (10.0%) | 52 (5.7%) | 73 (6.5%) |
| 6 weeks | All | 157 (74.8%) | 758 (82.8%) | 915 (81.3%) |
| | Some | 7 (3.3%) | 44 (4.8%) | 51 (4.5%) |
| | None | 46 (21.9%) | 113 (12.3%) | 159 (14.1%) |
| 6 months | All | 134 (63.8%) | 728 (79.6%) | 862 (76.6%) |
| | Some | 8 (3.8%) | 33 (3.6%) | 41 (3.6%) |
| | None | 68 (32.4%) | 154 (16.8%) | 222 (19.7%) |
| 12 months | All | 114 (54.3%) | 646 (70.6%) | 760 (67.6%) |
| | Some | 11 (5.2%) | 33 (3.6%) | 44 (3.9%) |
| | None | 85 (40.5%) | 236 (25.8%) | 321 (28.5%) |
| 18 months | All | 101 (48.1%) | 531 (58.0%) | 632 (56.2%) |
| | Some | 7 (3.3%) | 35 (3.8%) | 42 (3.7%) |
| | None | 102 (48.6%) | 349 (38.1%) | 451 (40.1%) |
| 24 months | All | 83 (39.5%) | 472 (51.6%) | 555 (49.3%) |
| | Some | 6 (2.9%) | 24 (2.6%) | 30 (2.7%) |
| | None | 121 (57.6%) | 419 (45.8%) | 540 (48.0%) |
| EORTC-QLQ-BR23 | | | | |
| Baseline | All | 0 (0.0%) | 8 (0.9%) | 8 (0.7%) |
| | Some | 188 (89.5%) | 854 (93.3%) | 1042 (92.6%) |
| | None | 22 (10.5%) | 53 (5.8%) | 75 (6.7%) |
| 6 weeks | All | 0 (0.0%) | 8 (0.9%) | 8 (0.7%) |
| | Some | 164 (78.1%) | 789 (86.2%) | 953 (84.7%) |
| | None | 46 (21.9%) | 118 (12.9%) | 164 (14.6%) |
| 6 months | All | 7 (3.3%) | 22 (2.4%) | 29 (2.6%) |
| | Some | 133 (63.3%) | 733 (80.1%) | 866 (77.0%) |
| | None | 70 (33.3%) | 160 (17.5%) | 230 (20.4%) |

| | | | | |
|--------------------------|-------------|------------------------|---------------------|----------------|
| 12 months | All | 7 (3.3%) | 27 (3.0%) | 34 (3.0%) |
| | Some | 118 (56.2%) | 650 (71.0%) | 768 (68.3%) |
| | None | 85 (40.5%) | 238 (26.0%) | 323 (28.7%) |
| 18 months | All | 5 (2.4%) | 16 (1.7%) | 21 (1.9%) |
| | Some | 102 (48.6%) | 548 (59.9%) | 650 (57.8%) |
| | None | 103 (49.0%) | 351 (38.4%) | 454 (40.4%) |
| 24 months | All | 2 (1.0%) | 26 (2.8%) | 28 (2.5%) |
| | Some | 87 (41.4%) | 472 (51.6%) | 559 (49.7%) |
| | None | 121 (57.6%) | 417 (45.6%) | 538 (47.8%) |
| EORTC-QLQ-ELD15 | | | | |
| Baseline | All | 182 (86.7%) | 820 (89.6%) | 1002 (89.1%) |
| | Some | 6 (2.9%) | 36 (3.9%) | 42 (3.7%) |
| | None | 22 (10.5%) | 59 (6.4%) | 81 (7.2%) |
| 6 weeks | All | 161 (76.7%) | 777 (84.9%) | 938 (83.4%) |
| | Some | 1 (0.5%) | 16 (1.7%) | 17 (1.5%) |
| | None | 48 (22.9%) | 122 (13.3%) | 170 (15.1%) |
| 6 months | All | 134 (63.8%) | 715 (78.1%) | 849 (75.5%) |
| | Some | 7 (3.3%) | 29 (3.2%) | 36 (3.2%) |
| | None | 69 (32.9%) | 171 (18.7%) | 240 (21.3%) |
| 12 months | All | 119 (56.7%) | 646 (70.6%) | 765 (68.0%) |
| | Some | 5 (2.4%) | 27 (3.0%) | 32 (2.8%) |
| | None | 86 (41.0%) | 242 (26.4%) | 328 (29.2%) |
| 18 months | All | 101 (48.1%) | 531 (58.0%) | 632 (56.2%) |
| | Some | 5 (2.4%) | 23 (2.5%) | 28 (2.5%) |
| | None | 104 (49.5%) | 361 (39.5%) | 465 (41.3%) |
| 24 months | All | 88 (41.9%) | 473 (51.7%) | 561 (49.9%) |
| | Some | 0 (0.0%) | 18 (2.0%) | 18 (1.6%) |
| | None | 122 (58.1%) | 424 (46.3%) | 546 (48.5%) |
| MASTECTOMY COHORT | | | | |
| | | No radiotherapy | Radiotherapy | Total |
| | | N = 459 | N = 169 | N = 628 |
| EORTC-QLQ-C30 | | | | |
| Baseline | All | 416 (90.6%) | 151 (89.3%) | 567 (90.3%) |

| | | | | |
|-----------------------|-------------|-------------|-------------|-------------|
| | Some | 19 (4.1%) | 7 (4.1%) | 26 (4.1%) |
| | None | 24 (5.2%) | 11 (6.5%) | 35 (5.6%) |
| 6 weeks | All | 384 (83.7%) | 130 (76.9%) | 514 (81.8%) |
| | Some | 18 (3.9%) | 5 (3.0%) | 23 (3.7%) |
| | None | 57 (12.4%) | 34 (20.1%) | 91 (14.5%) |
| 6 months | All | 354 (77.1%) | 129 (76.3%) | 483 (76.9%) |
| | Some | 19 (4.1%) | 7 (4.1%) | 26 (4.1%) |
| | None | 86 (18.7%) | 33 (19.5%) | 119 (18.9%) |
| 12 months | All | 285 (62.1%) | 98 (58.0%) | 383 (61.0%) |
| | Some | 22 (4.8%) | 9 (5.3%) | 31 (4.9%) |
| | None | 152 (33.1%) | 62 (36.7%) | 214 (34.1%) |
| 18 months | All | 237 (51.6%) | 78 (46.2%) | 315 (50.2%) |
| | Some | 13 (2.8%) | 11 (6.5%) | 24 (3.8%) |
| | None | 209 (45.5%) | 80 (47.3%) | 289 (46.0%) |
| 24 months | All | 204 (44.4%) | 80 (47.3%) | 284 (45.2%) |
| | Some | 10 (2.2%) | 6 (3.6%) | 16 (2.5%) |
| | None | 245 (53.4%) | 83 (49.1%) | 328 (52.2%) |
| EORTC-QLQ-BR23 | | | | |
| Baseline | All | 2 (0.4%) | 1 (0.6%) | 3 (0.5%) |
| | Some | 430 (93.7%) | 158 (93.5%) | 588 (93.6%) |
| | None | 27 (5.9%) | 10 (5.9%) | 37 (5.9%) |
| 6 weeks | All | 0 (0.0%) | 0 (0.0%) | 0 (0.0%) |
| | Some | 403 (87.8%) | 134 (79.3%) | 537 (85.5%) |
| | None | 56 (12.2%) | 35 (20.7%) | 91 (14.5%) |
| 6 months | All | 3 (0.7%) | 3 (1.8%) | 6 (1.0%) |
| | Some | 368 (80.2%) | 132 (78.1%) | 500 (79.6%) |
| | None | 88 (19.2%) | 34 (20.1%) | 122 (19.4%) |
| 12 months | All | 10 (2.2%) | 1 (0.6%) | 11 (1.8%) |
| | Some | 296 (64.5%) | 106 (62.7%) | 402 (64.0%) |
| | None | 153 (33.3%) | 62 (36.7%) | 215 (34.2%) |
| 18 months | All | 6 (1.3%) | 1 (0.6%) | 7 (1.1%) |
| | Some | 245 (53.4%) | 88 (52.1%) | 333 (53.0%) |
| | None | 208 (45.3%) | 80 (47.3%) | 288 (45.9%) |

| | | | | |
|------------------------|-------------|-------------|-------------|-------------|
| 24 months | All | 7 (1.5%) | 2 (1.2%) | 9 (1.4%) |
| | Some | 207 (45.1%) | 84 (49.7%) | 291 (46.3%) |
| | None | 245 (53.4%) | 83 (49.1%) | 328 (52.2%) |
| EORTC-QLQ-ELD15 | | | | |
| Baseline | All | 408 (88.9%) | 151 (89.3%) | 559 (89.0%) |
| | Some | 16 (3.5%) | 7 (4.1%) | 23 (3.7%) |
| | None | 35 (7.6%) | 11 (6.5%) | 46 (7.3%) |
| 6 weeks | All | 391 (85.2%) | 130 (76.9%) | 521 (83.0%) |
| | Some | 11 (2.4%) | 3 (1.8%) | 14 (2.2%) |
| | None | 57 (12.4%) | 36 (21.3%) | 93 (14.8%) |
| 6 months | All | 356 (77.6%) | 131 (77.5%) | 487 (77.5%) |
| | Some | 14 (3.1%) | 3 (1.8%) | 17 (2.7%) |
| | None | 89 (19.4%) | 35 (20.7%) | 124 (19.7%) |
| 12 months | All | 291 (63.4%) | 99 (58.6%) | 390 (62.1%) |
| | Some | 12 (2.6%) | 8 (4.7%) | 20 (3.2%) |
| | None | 156 (34.0%) | 62 (36.7%) | 218 (34.7%) |
| 18 months | All | 234 (51.0%) | 84 (49.7%) | 318 (50.6%) |
| | Some | 12 (2.6%) | 4 (2.4%) | 16 (2.5%) |
| | None | 213 (46.4%) | 81 (47.9%) | 294 (46.8%) |
| 24 months | All | 200 (43.6%) | 80 (47.3%) | 280 (44.6%) |
| | Some | 13 (2.8%) | 6 (3.6%) | 19 (3.0%) |
| | None | 246 (53.6%) | 83 (49.1%) | 329 (52.4%) |

Supplementary Table 9 - Mean (SD) scores for the EORTC QLQ-BR23 scale at each time point in the radiotherapy versus no radiotherapy cohorts with adjusted mean difference (95% CI) and p-value.

| BREAST-CONSERVING SURGERY COHORT (N=1042)* | | | | | |
|--------------------------------------------|-------------------------------|----------------------|----------------------|-----------------------|---------|
| Time point | Domain | No radiotherapy | Radiotherapy | Treatment Effect | P value |
| 6 weeks | Body image | 92.81 (90.84, 94.78) | 92.08 (91.24, 92.92) | -0.73 (-2.88, 1.41) | 0.502 |
| | Sexual functioning | 7.79 (5.22, 10.35) | 8.08 (7.01, 9.14) | 0.29 (-2.49, 3.07) | 0.837 |
| | Sexual enjoyment | 60.30 (46.13, 74.46) | 60.35 (54.38, 66.32) | 0.06 (-15.33, 15.44) | 0.994 |
| | Future perspective | 70.17 (66.42, 73.92) | 67.01 (65.42, 68.61) | -3.16 (-7.24, 0.92) | 0.128 |
| | Systemic therapy side effects | 11.14 (9.54, 12.73) | 12.61 (11.93, 13.28) | 1.47 (-0.26, 3.20) | 0.095 |
| | Breast symptoms | 21.12 (18.15, 24.10) | 22.26 (20.97, 23.54) | 1.13 (-2.11, 4.38) | 0.493 |
| | Arm symptoms | 13.03 (10.47, 15.60) | 14.75 (13.64, 15.85) | 1.71 (-1.08, 4.51) | 0.229 |
| | Upset by hair loss | 49.27 (28.22, 70.32) | 29.56 (20.71, 38.40) | -19.71 (-42.52, 3.10) | 0.088 |
| 6 months | Body image | 90.93 (88.36, 93.50) | 91.29 (90.25, 92.32) | 0.36 (-2.41, 3.14) | 0.798 |
| | Sexual functioning | 11.30 (8.40, 14.20) | 9.09 (7.95, 10.23) | -2.21 (-5.33, 0.90) | 0.163 |
| | Sexual enjoyment | 59.01 (46.32, 71.71) | 53.04 (47.74, 58.34) | -5.97 (-19.68, 7.74) | 0.389 |
| | Future perspective | 69.73 (65.45, 74.01) | 69.77 (68.05, 71.50) | 0.04 (-4.57, 4.66) | 0.985 |
| | Systemic therapy side effects | 16.88 (14.82, 18.95) | 15.87 (15.03, 16.71) | -1.01 (-3.24, 1.21) | 0.373 |
| | Breast symptoms | 11.00 (8.30, 13.71) | 17.27 (16.16, 18.38) | 6.27 (3.34, 9.19) | <0.001 |
| | Arm symptoms | 11.73 (8.83, 14.62) | 13.71 (12.53, 14.89) | 1.98 (-1.14, 5.11) | 0.213 |
| | Upset by hair loss | 43.90 (16.78, 71.03) | 36.32 (26.65, 45.99) | -7.58 (-36.43, 21.26) | 0.598 |
| 12 months | Body image | 90.06 (87.31, 92.80) | 91.38 (90.27, 92.48) | 1.32 (-1.64, 4.28) | 0.382 |
| | Sexual functioning | 9.54 (6.60, 12.49) | 9.53 (8.35, 10.71) | -0.02 (-3.20, 3.16) | 0.992 |
| | Sexual enjoyment | 53.44 (35.79, 71.10) | 59.54 (53.53, 65.56) | 6.10 (-12.30, 24.49) | 0.510 |

| | | | | | |
|-----------------------------------|--------------------------------------|-----------------------|----------------------|------------------------|-----------|
| | Future perspective | 66.61 (62.18, 71.04) | 69.27 (67.48, 71.05) | 2.65 (-2.12, 7.43) | 0.27 6 |
| | Systemic therapy side effects | 16.06 (13.94, 18.18) | 15.75 (14.90, 16.61) | -0.31 (-2.60, 1.98) | 0.79 3 |
| | Breast symptoms | 9.90 (7.35, 12.45) | 13.79 (12.74, 14.83) | 3.89 (1.13, 6.64) | 0.00 6 |
| | Arm symptoms | 14.05 (10.92, 17.19) | 13.29 (12.00, 14.57) | -0.77 (-4.16, 2.62) | 0.65 7 |
| | Upset by hair loss | 54.96 (32.04, 77.87) | 41.52 (31.63, 51.41) | -13.44 (-38.42, 11.55) | 0.28 3 |
| 18 months | Body image | 89.80 (86.73, 92.88) | 90.84 (89.55, 92.13) | 1.04 (-2.30, 4.37) | 0.54 2 |
| | Sexual functioning | 9.85 (6.36, 13.34) | 8.81 (7.39, 10.24) | -1.03 (-4.81, 2.74) | 0.59 1 |
| | Sexual enjoyment | 52.47 (31.38, 73.55) | 56.69 (49.52, 63.86) | 4.22 (-17.76, 26.21) | 0.70 1 |
| | Future perspective | 72.24 (67.25, 77.23) | 69.73 (67.63, 71.83) | -2.51 (-7.92, 2.90) | 0.36 3 |
| | Systemic therapy side effects | 16.28 (13.94, 18.61) | 15.89 (14.91, 16.87) | -0.39 (-2.92, 2.14) | 0.76 4 |
| | Breast symptoms | 9.96 (7.24, 12.67) | 12.18 (11.02, 13.34) | 2.22 (-0.73, 5.18) | 0.14 0 |
| | Arm symptoms | 13.92 (10.67, 17.18) | 13.08 (11.69, 14.46) | -0.85 (-4.38, 2.69) | 0.63 8 |
| | Upset by hair loss | 43.14 (14.33, 71.96) | 40.63 (27.30, 53.96) | -2.52 (-34.27, 29.24) | 0.87 2 |
| 24 months | Body image | 88.24 (84.98, 91.51) | 91.15 (89.83, 92.47) | 2.91 (-0.61, 6.43) | 0.10 5 |
| | Sexual functioning | 9.43 (5.78, 13.07) | 9.48 (8.00, 10.96) | 0.05 (-3.88, 3.99) | 0.97 9 |
| | Sexual enjoyment | 60.67 (41.22, 80.11) | 52.27 (45.36, 59.18) | -8.40 (-28.85, 12.05) | 0.41 4 |
| | Future perspective | 69.22 (63.96, 74.49) | 70.25 (68.10, 72.40) | 1.02 (-4.66, 6.71) | 0.72 4 |
| | Systemic therapy side effects | 17.06 (14.59, 19.52) | 15.80 (14.80, 16.79) | -1.26 (-3.92, 1.39) | 0.35 1 |
| | Breast symptoms | 8.63 (6.08, 11.17) | 10.01 (8.95, 11.06) | 1.38 (-1.38, 4.14) | 0.32 5 |
| | Arm symptoms | 15.01 (11.18, 18.84) | 12.84 (11.25, 14.43) | -2.17 (-6.32, 1.97) | 0.30 4 |
| | Upset by hair loss | 73.42 (40.92, 105.93) | 38.16 (26.93, 49.38) | -35.27 (-69.79, -0.75) | 0.04 6 |
| MASTECTOMY COHORT (N=588)* | | | | | |

| Time point | Domain | No radiotherapy | Radiotherapy | Treatment Effect | P value |
|------------|-------------------------------|----------------------|----------------------|-----------------------|---------|
| 6 weeks | Body image | 81.92 (79.78, 84.05) | 81.76 (78.19, 85.32) | -0.16 (-4.31, 4.00) | 0.940 |
| | Sexual functioning | 4.04 (2.96, 5.11) | 4.39 (2.53, 6.26) | 0.36 (-1.79, 2.51) | 0.745 |
| | Sexual enjoyment | 46.17 (31.77, 60.57) | 61.86 (35.67, 88.05) | 15.69 (-13.94, 45.31) | 0.282 |
| | Future perspective | 69.71 (67.19, 72.23) | 67.91 (63.70, 72.12) | -1.81 (-6.72, 3.10) | 0.470 |
| | Systemic therapy side effects | 12.45 (11.44, 13.45) | 12.05 (10.35, 13.74) | -0.40 (-2.37, 1.57) | 0.689 |
| | Breast symptoms | 23.49 (21.65, 25.32) | 23.84 (20.75, 26.94) | 0.36 (-3.24, 3.96) | 0.845 |
| | Arm symptoms | 19.46 (17.57, 21.36) | 20.15 (16.95, 23.34) | 0.68 (-3.03, 4.39) | 0.718 |
| | Upset by hair loss | 37.37 (22.14, 52.61) | 64.87 (36.01, 93.73) | 27.50 (-4.90, 59.90) | 0.091 |
| 6 months | Body image | 80.37 (78.01, 82.74) | 79.99 (76.21, 83.77) | -0.38 (-4.84, 4.08) | 0.866 |
| | Sexual functioning | 5.38 (4.06, 6.70) | 6.01 (3.96, 8.06) | 0.63 (-1.81, 3.07) | 0.611 |
| | Sexual enjoyment | 67.61 (57.31, 77.90) | 55.31 (39.45, 71.17) | -12.30 (-30.57, 5.98) | 0.176 |
| | Future perspective | 70.59 (68.04, 73.13) | 67.71 (63.62, 71.80) | -2.87 (-7.70, 1.95) | 0.242 |
| | Systemic therapy side effects | 15.51 (14.43, 16.60) | 14.46 (12.72, 16.21) | -1.05 (-3.10, 1.00) | 0.316 |
| | Breast symptoms | 12.19 (10.66, 13.71) | 17.71 (15.30, 20.12) | 5.52 (2.67, 8.37) | <0.001 |
| | Arm symptoms | 14.80 (13.05, 16.56) | 16.87 (14.10, 19.64) | 2.07 (-1.21, 5.35) | 0.215 |
| | Upset by hair loss | 37.36 (22.01, 52.71) | 51.20 (28.92, 73.48) | 13.84 (-13.42, 41.10) | 0.300 |
| 12 months | Body image | 81.27 (78.79, 83.75) | 81.28 (77.24, 85.32) | 0.01 (-4.73, 4.75) | 0.997 |
| | Sexual functioning | 5.85 (4.37, 7.33) | 5.27 (2.86, 7.69) | -0.57 (-3.41, 2.26) | 0.690 |
| | Sexual enjoyment | 53.70 (41.21, 66.19) | 45.79 (24.53, 67.05) | -7.91 (-33.12, 17.30) | 0.521 |
| | Future perspective | 69.82 (66.89, 72.75) | 67.04 (62.23, 71.86) | -2.78 (-8.42, 2.86) | 0.333 |
| | Systemic therapy side effects | 15.94 (14.61, 17.27) | 17.05 (14.84, 19.25) | 1.11 (-1.46, 3.69) | 0.396 |

| | | | | | |
|------------------|--------------------------------------|----------------------|-----------------------|------------------------|--------|
| | Breast symptoms | 10.04 (8.43, 11.65) | 17.16 (14.57, 19.75) | 7.12 (4.07, 10.17) | <0.001 |
| | Arm symptoms | 12.00 (10.24, 13.77) | 18.35 (15.49, 21.20) | 6.34 (2.99, 9.70) | <0.001 |
| | Upset by hair loss | 40.20 (23.58, 56.83) | 51.73 (28.06, 75.40) | 11.53 (-17.27, 40.33) | 0.415 |
| 18 months | Body image | 82.33 (79.68, 84.97) | 81.68 (77.43, 85.93) | -0.65 (-5.65, 4.36) | 0.800 |
| | Sexual functioning | 6.07 (4.28, 7.86) | 5.74 (2.82, 8.65) | -0.33 (-3.75, 3.08) | 0.848 |
| | Sexual enjoyment | 54.24 (37.66, 70.81) | 41.98 (19.11, 64.86) | -12.26 (-40.34, 15.83) | 0.372 |
| | Future perspective | 71.04 (67.85, 74.23) | 65.22 (60.07, 70.38) | -5.82 (-11.88, 0.25) | 0.060 |
| | Systemic therapy side effects | 15.69 (14.19, 17.18) | 17.85 (15.43, 20.28) | 2.16 (-0.68, 5.01) | 0.135 |
| | Breast symptoms | 9.81 (8.08, 11.55) | 11.29 (8.45, 14.13) | 1.48 (-1.85, 4.80) | 0.383 |
| | Arm symptoms | 13.98 (11.84, 16.13) | 17.02 (13.47, 20.58) | 3.04 (-1.11, 7.18) | 0.150 |
| | Upset by hair loss | 48.18 (29.58, 66.77) | 72.33 (49.30, 95.35) | 24.15 (-5.31, 53.61) | 0.099 |
| 24 months | Body image | 81.84 (78.85, 84.83) | 78.66 (74.08, 83.23) | -3.19 (-8.66, 2.28) | 0.253 |
| | Sexual functioning | 6.15 (4.14, 8.16) | 5.40 (2.51, 8.29) | -0.75 (-4.27, 2.77) | 0.674 |
| | Sexual enjoyment | 59.71 (46.62, 72.80) | 46.58 (28.38, 64.78) | -13.13 (-36.10, 9.83) | 0.245 |
| | Future perspective | 69.58 (66.03, 73.13) | 64.91 (59.49, 70.34) | -4.66 (-11.15, 1.82) | 0.158 |
| | Systemic therapy side effects | 16.40 (14.78, 18.02) | 17.67 (15.18, 20.16) | 1.27 (-1.71, 4.24) | 0.402 |
| | Breast symptoms | 10.17 (8.24, 12.10) | 12.87 (9.95, 15.79) | 2.70 (-0.79, 6.20) | 0.129 |
| | Arm symptoms | 15.31 (12.58, 18.05) | 21.50 (17.35, 25.66) | 6.19 (1.21, 11.17) | 0.015 |
| | Upset by hair loss | 33.81 (11.03, 56.59) | 88.36 (56.49, 120.22) | 54.55 (14.54, 94.55) | 0.016 |

*patients with questionnaires available at baseline.

Supplementary Table 10 - Mean (SD) scores for the EORTC QLQ-C30 scale at each time point in the radiotherapy versus no radiotherapy cohorts with adjusted mean difference (95% CI) and p-value.

BREAST-CONSERVING SURGERY COHORT

| Time point | Domain | No radiotherapy | Radiotherapy | Treatment Effect | P value |
|------------|----------------------------|----------------------|----------------------|----------------------|---------|
| 6 weeks | Global health status / QoL | 71.50 (68.98, 74.01) | 71.58 (70.49, 72.67) | 0.09 (-2.66, 2.83) | 0.951 |
| | Physical functioning | 79.75 (78.01, 81.49) | 79.01 (78.26, 79.76) | -0.74 (-2.64, 1.16) | 0.445 |
| | Role functioning | 76.53 (72.79, 80.27) | 74.47 (72.85, 76.09) | -2.06 (-6.14, 2.02) | 0.322 |
| | Emotional functioning | 79.89 (77.28, 82.51) | 79.39 (78.24, 80.54) | -0.50 (-3.36, 2.35) | 0.729 |
| | Cognitive functioning | 86.97 (84.58, 89.36) | 87.35 (86.31, 88.38) | 0.38 (-2.22, 2.98) | 0.775 |
| | Social functioning | 85.98 (82.79, 89.17) | 82.46 (81.08, 83.85) | -3.51 (-7.00, -0.03) | 0.048 |
| | Fatigue | 28.84 (26.02, 31.66) | 30.85 (29.63, 32.07) | 2.01 (-1.06, 5.08) | 0.199 |
| | Nausea / Vomiting | 4.51 (2.90, 6.11) | 4.27 (3.58, 4.96) | -0.24 (-1.98, 1.51) | 0.791 |
| | Pain | 20.14 (16.98, 23.30) | 21.99 (20.62, 23.37) | 1.85 (-1.60, 5.29) | 0.293 |
| | Dyspnoea | 14.09 (11.13, 17.04) | 14.66 (13.38, 15.95) | 0.58 (-2.64, 3.80) | 0.725 |
| | Insomnia | 29.22 (25.21, 33.23) | 30.26 (28.53, 31.99) | 1.04 (-3.33, 5.40) | 0.641 |
| | Appetite loss | 11.76 (8.84, 14.68) | 11.29 (10.03, 12.56) | -0.47 (-3.65, 2.72) | 0.773 |
| | Constipation | 14.11 (10.99, 17.23) | 13.53 (12.18, 14.89) | -0.58 (-3.97, 2.82) | 0.739 |
| | Diarrhoea | 3.34 (1.16, 5.52) | 5.14 (4.20, 6.08) | 1.80 (-0.58, 4.18) | 0.138 |
| | Financial Problems | 4.49 (2.68, 6.31) | 4.06 (3.26, 4.85) | -0.44 (-2.42, 1.55) | 0.665 |
| 6 months | Global health status / QoL | 71.64 (68.92, 74.36) | 72.06 (70.93, 73.18) | 0.41 (-2.53, 3.36) | 0.783 |
| | Physical functioning | 78.52 (76.39, 80.65) | 78.55 (77.67, 79.43) | 0.03 (-2.28, 2.34) | 0.978 |
| | Role functioning | 77.19 (73.38, 80.99) | 79.46 (77.90, 81.01) | 2.27 (-1.84, 6.38) | 0.279 |
| | Emotional functioning | 79.80 (76.82, 82.77) | 79.99 (78.75, 81.23) | 0.19 (-3.03, 3.42) | 0.906 |
| | Cognitive functioning | 83.92 (81.23, 86.62) | 85.25 (84.14, 86.36) | 1.33 (-1.59, 4.25) | 0.373 |
| | Social functioning | 86.43 (83.07, 89.79) | 86.23 (84.86, 87.60) | -0.20 (-3.83, 3.43) | 0.913 |
| | Fatigue | 30.43 (27.02, 33.84) | 31.28 (29.88, 32.67) | 0.85 (-2.84, 4.54) | 0.652 |
| | Nausea / Vomiting | 5.79 (3.91, 7.67) | 3.76 (3.00, 4.53) | -2.03 (-4.06, 0.00) | 0.050 |
| | Pain | 22.20 (18.57, 25.84) | 22.73 (21.24, 24.22) | 0.52 (-3.40, 4.45) | 0.794 |
| | Dyspnoea | 22.60 (18.89, 26.31) | 18.98 (17.47, 20.50) | -3.62 (-7.63, 0.39) | 0.077 |
| | Insomnia | 28.06 (23.47, 32.64) | 30.24 (28.36, 32.12) | 2.18 (-2.77, 7.14) | 0.388 |
| | Appetite loss | 14.63 (11.19, 18.07) | 10.28 (8.87, 11.69) | -4.35 (-8.06, -0.63) | 0.022 |
| | Constipation | 14.33 (10.41, 18.25) | 14.76 (13.16, 16.36) | 0.43 (-3.80, 4.66) | 0.842 |
| | Diarrhoea | 6.80 (4.16, 9.43) | 5.05 (3.98, 6.12) | -1.75 (-4.59, 1.10) | 0.229 |
| | Financial Problems | 4.12 (2.20, 6.05) | 3.52 (2.72, 4.31) | -0.61 (-2.69, 1.47) | 0.567 |
| 12 months | Global health status / QoL | 68.21 (65.33, 71.09) | 71.40 (70.24, 72.55) | 3.19 (0.08, 6.29) | 0.044 |
| | Physical functioning | 77.82 (75.45, 80.19) | 77.85 (76.89, 78.82) | 0.03 (-2.53, 2.60) | 0.980 |

| | | | | | |
|------------------|-----------------------------------|----------------------|----------------------|----------------------|-------|
| | Role functioning | 75.44 (71.10, 79.78) | 78.62 (76.86, 80.38) | 3.18 (-1.51, 7.87) | 0.183 |
| | Emotional functioning | 76.91 (73.60, 80.23) | 80.00 (78.65, 81.36) | 3.09 (-0.49, 6.67) | 0.090 |
| | Cognitive functioning | 83.85 (80.93, 86.77) | 84.45 (83.26, 85.64) | 0.60 (-2.55, 3.76) | 0.707 |
| | Social functioning | 84.54 (80.87, 88.21) | 86.95 (85.46, 88.43) | 2.41 (-1.56, 6.37) | 0.233 |
| | Fatigue | 32.29 (28.83, 35.74) | 29.33 (27.93, 30.73) | -2.96 (-6.69, 0.77) | 0.120 |
| | Nausea / Vomiting | 2.70 (1.11, 4.28) | 3.60 (2.96, 4.24) | 0.91 (-0.80, 2.61) | 0.298 |
| | Pain | 24.68 (20.35, 29.01) | 23.85 (22.10, 25.61) | -0.83 (-5.50, 3.84) | 0.728 |
| | Dyspnoea | 22.28 (18.09, 26.46) | 19.86 (18.16, 21.56) | -2.42 (-6.94, 2.11) | 0.295 |
| | Insomnia | 29.58 (24.72, 34.45) | 32.52 (30.55, 34.49) | 2.94 (-2.31, 8.19) | 0.272 |
| | Appetite loss | 11.71 (7.81, 15.61) | 11.05 (9.47, 12.64) | -0.66 (-4.88, 3.56) | 0.759 |
| | Constipation | 15.12 (10.99, 19.25) | 14.52 (12.84, 16.19) | -0.61 (-5.07, 3.85) | 0.789 |
| | Diarrhoea | 5.52 (2.81, 8.23) | 4.98 (3.89, 6.06) | -0.55 (-3.47, 2.37) | 0.713 |
| | Financial Problems | 5.43 (3.31, 7.55) | 3.05 (2.19, 3.91) | -2.38 (-4.67, -0.09) | 0.041 |
| 18 months | Global health status / QoL | 69.00 (65.77, 72.24) | 71.01 (69.63, 72.40) | 2.01 (-1.52, 5.54) | 0.264 |
| | Physical functioning | 76.87 (74.28, 79.45) | 76.20 (75.09, 77.30) | -0.67 (-3.50, 2.16) | 0.642 |
| | Role functioning | 72.91 (68.03, 77.80) | 78.22 (76.14, 80.29) | 5.30 (-0.02, 10.63) | 0.051 |
| | Emotional functioning | 79.09 (75.71, 82.47) | 80.81 (79.36, 82.27) | 1.73 (-1.96, 5.41) | 0.358 |
| | Cognitive functioning | 82.36 (79.08, 85.63) | 84.68 (83.29, 86.07) | 2.33 (-1.23, 5.89) | 0.199 |
| | Social functioning | 84.40 (80.39, 88.41) | 88.01 (86.30, 89.72) | 3.61 (-0.75, 7.98) | 0.105 |
| | Fatigue | 31.27 (27.45, 35.09) | 29.70 (28.07, 31.33) | -1.57 (-5.73, 2.60) | 0.460 |
| | Nausea / Vomiting | 6.86 (4.66, 9.07) | 3.33 (2.40, 4.27) | -3.53 (-5.93, -1.14) | 0.004 |
| | Pain | 28.18 (23.55, 32.80) | 24.06 (22.09, 26.03) | -4.11 (-9.14, 0.91) | 0.109 |
| | Dyspnoea | 21.09 (16.65, 25.54) | 19.36 (17.47, 21.24) | -1.74 (-6.57, 3.10) | 0.481 |
| | Insomnia | 31.91 (26.63, 37.20) | 30.65 (28.43, 32.87) | -1.26 (-6.99, 4.47) | 0.666 |
| | Appetite loss | 13.60 (9.70, 17.49) | 9.86 (8.22, 11.51) | -3.73 (-7.97, 0.50) | 0.084 |
| | Constipation | 16.70 (12.11, 21.28) | 14.18 (12.26, 16.11) | -2.51 (-7.49, 2.46) | 0.322 |
| | Diarrhoea | 4.69 (1.69, 7.69) | 5.94 (4.69, 7.19) | 1.25 (-2.00, 4.49) | 0.451 |
| | Financial Problems | 5.43 (3.24, 7.62) | 2.41 (1.48, 3.35) | -3.02 (-5.40, -0.63) | 0.013 |
| 24 months | Global health status / QoL | 69.80 (66.08, 73.52) | 69.76 (68.24, 71.28) | -0.04 (-4.07, 3.98) | 0.983 |
| | Physical functioning | 74.42 (71.33, 77.51) | 75.69 (74.42, 76.97) | 1.27 (-2.08, 4.63) | 0.456 |
| | Role functioning | 72.87 (67.68, 78.07) | 77.88 (75.74, 80.03) | 5.01 (-0.62, 10.64) | 0.081 |
| | Emotional functioning | 80.77 (77.20, 84.34) | 79.95 (78.49, 81.41) | -0.82 (-4.68, 3.04) | 0.676 |
| | Cognitive functioning | 80.64 (77.18, 84.10) | 85.15 (83.74, 86.56) | 4.51 (0.78, 8.25) | 0.018 |

| | | | | |
|---------------------------|----------------------|----------------------|----------------------|-------|
| Social functioning | 84.45 (79.68, 89.23) | 86.73 (84.81, 88.65) | 2.28 (-2.87, 7.42) | 0.385 |
| Fatigue | 32.48 (28.40, 36.56) | 29.32 (27.65, 30.99) | -3.16 (-7.58, 1.25) | 0.160 |
| Nausea / Vomiting | 5.84 (3.69, 7.99) | 3.41 (2.52, 4.30) | -2.43 (-4.76, -0.10) | 0.041 |
| Pain | 25.25 (20.20, 30.30) | 23.88 (21.79, 25.96) | -1.37 (-6.84, 4.09) | 0.622 |
| Dyspnoea | 24.79 (19.88, 29.70) | 20.17 (18.16, 22.19) | -4.62 (-9.93, 0.69) | 0.088 |
| Insomnia | 33.09 (27.39, 38.79) | 30.48 (28.14, 32.83) | -2.61 (-8.77, 3.55) | 0.406 |
| Appetite loss | 13.70 (9.44, 17.96) | 10.27 (8.50, 12.04) | -3.43 (-8.05, 1.18) | 0.145 |
| Constipation | 17.54 (12.65, 22.43) | 13.67 (11.64, 15.70) | -3.87 (-9.16, 1.42) | 0.152 |
| Diarrhoea | 7.27 (3.62, 10.92) | 6.08 (4.58, 7.58) | -1.19 (-5.13, 2.75) | 0.554 |
| Financial Problems | 4.31 (1.95, 6.67) | 3.18 (2.23, 4.14) | -1.13 (-3.67, 1.42) | 0.386 |

MASTECTOMY COHORT

| Time point | Domain | No radiotherapy | Radiotherapy | Treatment Effect | P value |
|-----------------|-----------------------------------|----------------------|----------------------|----------------------|---------|
| 6 weeks | Global health status / QoL | 69.78 (68.19, 71.37) | 66.60 (63.90, 69.31) | -3.18 (-6.32, -0.04) | 0.047 |
| | Physical functioning | 75.75 (74.47, 77.02) | 71.82 (69.67, 73.98) | -3.93 (-6.43, -1.42) | 0.002 |
| | Role functioning | 68.38 (65.80, 70.96) | 67.58 (63.25, 71.91) | -0.80 (-5.84, 4.24) | 0.756 |
| | Emotional functioning | 80.93 (79.28, 82.59) | 79.85 (77.03, 82.66) | -1.09 (-4.35, 2.18) | 0.514 |
| | Cognitive functioning | 85.98 (84.47, 87.48) | 84.79 (82.23, 87.34) | -1.19 (-4.16, 1.77) | 0.429 |
| | Social functioning | 80.38 (78.17, 82.59) | 77.11 (73.35, 80.87) | -3.27 (-7.63, 1.09) | 0.141 |
| | Fatigue | 33.22 (31.44, 34.99) | 34.78 (31.78, 37.78) | 1.56 (-1.92, 5.05) | 0.379 |
| | Nausea / Vomiting | 3.80 (2.85, 4.76) | 4.25 (2.64, 5.86) | 0.45 (-1.42, 2.32) | 0.637 |
| | Pain | 23.53 (21.40, 25.66) | 22.13 (18.54, 25.71) | -1.40 (-5.57, 2.77) | 0.510 |
| | Dyspnoea | 14.74 (13.15, 16.33) | 14.14 (11.47, 16.81) | -0.59 (-3.70, 2.52) | 0.709 |
| | Insomnia | 27.54 (24.95, 30.12) | 27.45 (23.09, 31.82) | -0.08 (-5.16, 4.99) | 0.974 |
| | Appetite loss | 13.99 (11.88, 16.11) | 14.98 (11.42, 18.55) | 0.99 (-3.15, 5.14) | 0.638 |
| | Constipation | 14.05 (11.87, 16.24) | 15.66 (12.00, 19.33) | 1.61 (-2.66, 5.88) | 0.459 |
| | Diarrhoea | 4.60 (3.22, 5.99) | 4.39 (2.03, 6.74) | -0.21 (-2.94, 2.52) | 0.878 |
| | Financial Problems | 3.60 (2.44, 4.75) | 4.54 (2.57, 6.51) | 0.94 (-1.34, 3.22) | 0.416 |
| 6 months | Global health status / QoL | 69.95 (68.14, 71.76) | 69.31 (66.40, 72.21) | -0.64 (-4.06, 2.78) | 0.714 |
| | Physical functioning | 75.42 (74.05, 76.78) | 73.82 (71.60, 76.03) | -1.60 (-4.20, 1.00) | 0.227 |
| | Role functioning | 77.98 (75.59, 80.37) | 77.33 (73.45, 81.20) | -0.65 (-5.20, 3.90) | 0.779 |
| | Emotional functioning | 82.45 (80.71, 84.20) | 81.47 (78.65, 84.28) | -0.99 (-4.30, 2.33) | 0.558 |
| | Cognitive functioning | 83.72 (82.09, 85.34) | 84.23 (81.60, 86.87) | 0.52 (-2.58, 3.61) | 0.743 |
| | Social functioning | 86.23 (84.04, 88.42) | 83.77 (80.23, 87.30) | -2.46 (-6.62, 1.70) | 0.245 |

| | | | | | |
|------------------|-----------------------------------|----------------------|----------------------|----------------------|-------|
| | Fatigue | 30.40 (28.45, 32.35) | 34.85 (31.72, 37.98) | 4.45 (0.77, 8.14) | 0.018 |
| | Nausea / Vomiting | 3.91 (2.91, 4.91) | 4.36 (2.76, 5.97) | 0.45 (-1.44, 2.34) | 0.639 |
| | Pain | 20.22 (18.17, 22.27) | 18.51 (15.22, 21.80) | -1.71 (-5.58, 2.16) | 0.386 |
| | Dyspnoea | 19.57 (17.39, 21.76) | 20.81 (17.28, 24.34) | 1.23 (-2.92, 5.39) | 0.559 |
| | Insomnia | 26.85 (24.28, 29.42) | 26.74 (22.59, 30.88) | -0.12 (-5.00, 4.77) | 0.963 |
| | Appetite loss | 10.56 (8.41, 12.71) | 13.00 (9.56, 16.45) | 2.44 (-1.62, 6.50) | 0.238 |
| | Constipation | 12.12 (10.06, 14.18) | 15.81 (12.51, 19.11) | 3.69 (-0.20, 7.58) | 0.063 |
| | Diarrhoea | 5.88 (4.50, 7.27) | 2.88 (0.65, 5.12) | -3.00 (-5.63, -0.37) | 0.026 |
| | Financial Problems | 4.64 (3.27, 6.00) | 2.99 (0.78, 5.20) | -1.65 (-4.24, 0.95) | 0.213 |
| 12 months | Global health status / QoL | 71.13 (69.26, 73.00) | 71.04 (67.92, 74.15) | -0.09 (-3.72, 3.53) | 0.960 |
| | Physical functioning | 73.50 (71.97, 75.02) | 71.89 (69.39, 74.40) | -1.60 (-4.54, 1.33) | 0.284 |
| | Role functioning | 76.24 (73.50, 78.97) | 74.72 (70.29, 79.16) | -1.52 (-6.73, 3.69) | 0.567 |
| | Emotional functioning | 82.44 (80.40, 84.49) | 76.75 (73.34, 80.15) | -5.70 (-9.67, -1.73) | 0.005 |
| | Cognitive functioning | 82.50 (80.64, 84.35) | 82.44 (79.36, 85.52) | -0.06 (-3.65, 3.54) | 0.975 |
| | Social functioning | 86.22 (84.00, 88.43) | 83.55 (79.89, 87.21) | -2.67 (-6.94, 1.60) | 0.220 |
| | Fatigue | 29.95 (27.76, 32.15) | 37.22 (33.63, 40.80) | 7.26 (3.07, 11.46) | 0.001 |
| | Nausea / Vomiting | 2.87 (1.80, 3.94) | 4.57 (2.81, 6.33) | 1.70 (-0.36, 3.76) | 0.105 |
| | Pain | 21.42 (18.92, 23.93) | 24.90 (20.80, 29.01) | 3.48 (-1.32, 8.28) | 0.154 |
| | Dyspnoea | 19.22 (16.60, 21.84) | 27.35 (23.07, 31.63) | 8.13 (3.11, 13.14) | 0.002 |
| | Insomnia | 27.21 (24.40, 30.02) | 29.26 (24.61, 33.90) | 2.04 (-3.38, 7.47) | 0.459 |
| | Appetite loss | 11.99 (9.54, 14.44) | 17.00 (12.98, 21.03) | 5.01 (0.31, 9.72) | 0.037 |
| | Constipation | 12.18 (9.87, 14.49) | 14.65 (10.87, 18.42) | 2.47 (-1.96, 6.89) | 0.273 |
| | Diarrhoea | 6.06 (4.22, 7.90) | 5.56 (2.51, 8.62) | -0.49 (-4.06, 3.08) | 0.786 |
| | Financial Problems | 3.63 (2.16, 5.10) | 6.72 (4.29, 9.15) | 3.09 (0.26, 5.93) | 0.033 |
| 18 months | Global health status / QoL | 70.24 (67.95, 72.54) | 66.05 (62.23, 69.86) | -4.20 (-8.63, 0.24) | 0.064 |
| | Physical functioning | 72.15 (70.44, 73.87) | 69.62 (66.85, 72.39) | -2.54 (-5.80, 0.72) | 0.127 |
| | Role functioning | 75.63 (72.48, 78.79) | 70.46 (65.30, 75.62) | -5.17 (-11.23, 0.89) | 0.094 |
| | Emotional functioning | 82.82 (80.73, 84.91) | 78.79 (75.36, 82.22) | -4.03 (-8.04, -0.02) | 0.049 |
| | Cognitive functioning | 84.09 (82.01, 86.16) | 79.87 (76.48, 83.25) | -4.22 (-8.19, -0.26) | 0.037 |
| | Social functioning | 86.97 (84.40, 89.54) | 83.50 (79.31, 87.69) | -3.47 (-8.38, 1.44) | 0.165 |
| | Fatigue | 31.71 (29.22, 34.21) | 37.15 (33.05, 41.24) | 5.44 (0.64, 10.23) | 0.026 |
| | Nausea / Vomiting | 3.51 (2.20, 4.81) | 5.25 (3.11, 7.38) | 1.74 (-0.76, 4.24) | 0.173 |
| | Pain | 21.95 (18.93, 24.98) | 26.00 (21.08, 30.92) | 4.05 (-1.72, 9.81) | 0.168 |

| | | | | | |
|------------------|-----------------------------------|----------------------|----------------------|----------------------|-------|
| | Dyspnoea | 21.96 (19.26, 24.67) | 22.45 (18.04, 26.85) | 0.48 (-4.67, 5.64) | 0.853 |
| | Insomnia | 27.20 (24.30, 30.10) | 30.54 (25.78, 35.30) | 3.35 (-2.20, 8.89) | 0.236 |
| | Appetite loss | 10.86 (8.17, 13.55) | 17.05 (12.65, 21.45) | 6.19 (1.04, 11.34) | 0.019 |
| | Constipation | 14.65 (11.93, 17.38) | 14.99 (10.52, 19.45) | 0.33 (-4.90, 5.56) | 0.900 |
| | Diarrhoea | 4.71 (2.94, 6.48) | 5.91 (3.03, 8.78) | 1.19 (-2.18, 4.57) | 0.487 |
| | Financial Problems | 3.35 (1.97, 4.72) | 3.81 (1.52, 6.10) | 0.46 (-2.20, 3.13) | 0.734 |
| 24 months | Global health status / QoL | 69.61 (67.13, 72.09) | 65.45 (61.58, 69.31) | -4.17 (-8.75, 0.42) | 0.075 |
| | Physical functioning | 70.82 (68.63, 73.02) | 69.03 (65.67, 72.39) | -1.79 (-5.80, 2.22) | 0.380 |
| | Role functioning | 71.81 (68.11, 75.51) | 70.44 (64.73, 76.16) | -1.37 (-8.17, 5.44) | 0.693 |
| | Emotional functioning | 82.60 (80.38, 84.81) | 78.03 (74.59, 81.47) | -4.57 (-8.66, -0.47) | 0.029 |
| | Cognitive functioning | 83.03 (80.90, 85.17) | 80.46 (77.14, 83.79) | -2.57 (-6.52, 1.38) | 0.201 |
| | Social functioning | 82.67 (79.60, 85.74) | 82.35 (77.56, 87.14) | -0.32 (-6.00, 5.36) | 0.912 |
| | Fatigue | 32.31 (29.71, 34.92) | 38.88 (34.85, 42.91) | 6.56 (1.76, 11.37) | 0.008 |
| | Nausea / Vomiting | 4.11 (2.74, 5.48) | 4.44 (2.31, 6.57) | 0.33 (-2.20, 2.87) | 0.796 |
| | Pain | 25.39 (22.14, 28.64) | 28.59 (23.54, 33.64) | 3.20 (-2.80, 9.20) | 0.295 |
| | Dyspnoea | 21.52 (18.41, 24.63) | 22.84 (17.99, 27.68) | 1.31 (-4.45, 7.08) | 0.654 |
| | Insomnia | 27.25 (23.82, 30.69) | 32.29 (26.95, 37.63) | 5.04 (-1.30, 11.37) | 0.119 |
| | Appetite loss | 13.49 (10.54, 16.44) | 13.78 (9.13, 18.43) | 0.29 (-5.22, 5.80) | 0.917 |
| | Constipation | 12.85 (10.00, 15.70) | 17.33 (12.92, 21.75) | 4.48 (-0.77, 9.73) | 0.094 |
| | Diarrhoea | 5.52 (3.26, 7.78) | 8.92 (5.45, 12.40) | 3.40 (-0.73, 7.53) | 0.106 |
| | Financial Problems | 3.40 (1.72, 5.08) | 4.86 (2.23, 7.49) | 1.47 (-1.65, 4.59) | 0.356 |

Supplementary table 11 - Fixed coefficients from the longitudinal model of global health status included in the EORTC QLQ-C30 scale.

| BREAST-CONSERVING SURGERY COHORT | | | |
|-----------------------------------------|-------------------------------|--------------------------|----------------|
| Term | Level | Effect (95% CI) | P-value |
| Treatment | Radiotherapy | -0.819 (-3.856, 2.219) | 0.597 |
| Time | 6 weeks | - | - |
| | 6 months | -0.153 (-3.446, 3.141) | 0.928 |
| | 12 months | -3.142 (-6.595, 0.311) | 0.075 |
| | 18 months | -4.525 (-8.096, -0.954) | 0.013 |
| | 24 months | -2.378 (-6.288, 1.531) | 0.233 |
| Treatment : Time | Radiotherapy:6 weeks | - | - |
| | Radiotherapy:6 months | 0.720 (-2.851, 4.291) | 0.693 |
| | Radiotherapy:12 months | 2.729 (-1.006, 6.464) | 0.152 |
| | Radiotherapy:18 months | 3.816 (-0.066, 7.698) | 0.054 |
| | Radiotherapy:24 months | 0.021 (-4.198, 4.241) | 0.992 |
| Baseline | | 0.504 (0.456, 0.551) | <0.001 |
| Age | | -0.196 (-0.363, -0.030) | 0.021 |
| CCI | 1 | - | - |
| | 2 | -0.876 (-3.531, 1.780) | 0.518 |
| MMSE | Normal Function | - | - |
| | Mild impairment | -0.119 (-2.924, 2.687) | 0.934 |
| | Moderate impairment | -9.399 (-17.491, -1.307) | 0.023 |
| | Severe | 3.895 (-17.826, 25.617) | 0.725 |
| ECOG | Mild | - | - |
| | Moderate | -8.512 (-14.434, -2.590) | 0.005 |
| | High | -7.824 (-15.243, -0.405) | 0.039 |
| Medications | | -0.446 (-0.789, -0.104) | 0.011 |
| MASTECTOMY COHORT | | | |
| Term | Level | Effect (95% CI) | P-value |
| Treatment | Radiotherapy | -3.129 (-6.587, 0.329) | 0.076 |
| Time | 6 weeks | - | - |
| | 6 months | -0.164 (-2.172, 1.843) | 0.872 |
| | 12 months | 1.180 (-0.963, 3.324) | 0.281 |

| | | | |
|-------------------------|-------------------------------|--------------------------|--------|
| | 18 months | -0.359 (-2.649, 1.931) | 0.759 |
| | 24 months | -1.785 (-4.239, 0.669) | 0.154 |
| Treatment : Time | Radiotherapy:6 weeks | - | - |
| | Radiotherapy:6 months | 2.581 (-1.301, 6.462) | 0.193 |
| | Radiotherapy:12 months | 3.340 (-0.869, 7.549) | 0.120 |
| | Radiotherapy:18 months | -0.129 (-4.649, 4.390) | 0.955 |
| | Radiotherapy:24 months | 4.214 (-0.427, 8.856) | 0.075 |
| Baseline | | 0.489 (0.420, 0.557) | <0.001 |
| Age | | -0.154 (-0.382, 0.075) | 0.188 |
| CCI | 1 | - | - |
| | 2 | -1.161 (-4.327, 2.005) | 0.473 |
| MMSE | Normal function | - | - |
| | Mild impairment | 1.068 (-2.456, 4.591) | 0.553 |
| | Moderate impairment | -6.152 (-17.462, 5.159) | 0.287 |
| ECOG | Mild | - | - |
| | Moderate | -7.067 (-13.113, -1.020) | 0.022 |
| | High | 1.900 (-10.931, 14.731) | 0.772 |
| Medications | | -0.844 (-1.296, -0.391) | <0.001 |

Supplementary Table 12 - Mean (SD) scores for the EORTC QLQ-ELD15 scale at each time point in the radiotherapy versus no radiotherapy cohorts with adjusted mean difference (95% CI) and p-value.

| BREAST-CONSERVING SURGERY COHORT | | | | | |
|-----------------------------------------|-----------------------------|------------------------|----------------------|-------------------------|----------------|
| Time point | Domain | No radiotherapy | Radiotherapy | Treatment Effect | P value |
| 6 weeks | Mobility | 21.41 (18.86, 23.97) | 20.76 (19.66, 21.86) | -0.65 (-3.44, 2.14) | 0.648 |
| | Worries about others | 39.10 (35.12, 43.07) | 38.14 (36.43, 39.86) | -0.96 (-5.29, 3.37) | 0.664 |
| | Worries | 32.56 (29.10, 36.02) | 34.17 (32.67, 35.67) | 1.61 (-2.15, 5.38) | 0.401 |
| | Maintaining purpose | 67.52 (62.58, 72.47) | 64.70 (62.55, 66.85) | -2.82 (-8.21, 2.57) | 0.305 |
| | Burden of illness | 29.48 (25.92, 33.04) | 28.93 (27.39, 30.47) | -0.56 (-4.43, 3.32) | 0.779 |
| | Joint stiffness | 29.29 (25.74, 32.83) | 26.08 (24.53, 27.62) | -3.21 (-7.08, 0.66) | 0.104 |
| | Family support | 74.72 (70.13, 79.30) | 74.38 (72.39, 76.36) | -0.34 (-5.34, 4.66) | 0.893 |
| 6 months | Mobility | 23.97 (20.99, 26.94) | 22.23 (21.00, 23.46) | -1.74 (-4.97, 1.49) | 0.291 |
| | Worries about others | 33.97 (29.53, 38.41) | 33.58 (31.75, 35.41) | -0.39 (-5.19, 4.41) | 0.874 |
| | Worries | 32.53 (28.57, 36.48) | 32.25 (30.63, 33.87) | -0.28 (-4.55, 4.00) | 0.899 |
| | Maintaining purpose | 59.97 (54.26, 65.67) | 63.22 (60.85, 65.59) | 3.26 (-2.92, 9.43) | 0.301 |
| | Burden of illness | 20.06 (16.22, 23.90) | 25.55 (23.96, 27.13) | 5.49 (1.33, 9.64) | 0.010 |
| | Joint stiffness | 39.78 (35.29, 44.26) | 38.71 (36.85, 40.57) | -1.06 (-5.92, 3.79) | 0.667 |
| | Family support | 67.10 (61.91, 72.29) | 69.99 (67.83, 72.14) | 2.89 (-2.73, 8.51) | 0.313 |
| 12 months | Mobility | 25.13 (21.78, 28.47) | 23.75 (22.39, 25.11) | -1.38 (-4.99, 2.24) | 0.455 |
| | Worries about others | 33.51 (28.81, 38.22) | 31.48 (29.58, 33.39) | -2.03 (-7.11, 3.05) | 0.433 |
| | Worries | 34.62 (30.39, 38.85) | 32.00 (30.27, 33.72) | -2.62 (-7.19, 1.95) | 0.261 |
| | Maintaining purpose | 59.69 (53.74, 65.65) | 63.28 (60.85, 65.71) | 3.58 (-2.85, 10.02) | 0.275 |
| | Burden of illness | 18.80 (14.73, 22.87) | 21.67 (20.02, 23.32) | 2.87 (-1.52, 7.26) | 0.200 |
| | Joint stiffness | 42.31 (37.71, 46.92) | 41.70 (39.81, 43.59) | -0.61 (-5.58, 4.37) | 0.810 |
| | Family support | 61.37 (55.43, 67.31) | 65.58 (63.17, 67.98) | 4.20 (-2.21, 10.62) | 0.199 |
| 18 months | Mobility | 26.75 (23.06, 30.44) | 25.38 (23.80, 26.96) | -1.37 (-5.41, 2.67) | 0.506 |
| | Worries about others | 32.56 (27.73, 37.40) | 29.94 (27.90, 31.99) | -2.62 (-7.87, 2.63) | 0.327 |
| | Worries | 30.90 (26.19, 35.62) | 31.68 (29.69, 33.68) | 0.78 (-4.34, 5.91) | 0.764 |
| | Maintaining purpose | 57.80 (51.56, 64.05) | 63.81 (61.14, 66.48) | 6.01 (-0.78, 12.80) | 0.083 |
| | Burden of illness | 16.45 (12.23, 20.67) | 18.20 (16.42, 19.97) | 1.74 (-2.83, 6.32) | 0.454 |
| | Joint stiffness | 44.80 (39.96, 49.63) | 42.11 (40.05, 44.17) | -2.69 (-7.94, 2.57) | 0.316 |
| | Family support | 58.77 (52.09, 65.44) | 62.21 (59.39, 65.04) | 3.45 (-3.80, 10.70) | 0.351 |
| 24 months | Mobility | 28.77 (24.55, 32.99) | 26.50 (24.75, 28.25) | -2.27 (-6.85, 2.31) | 0.331 |

| | | | | |
|-----------------------------|----------------------|----------------------|-----------------------|-------|
| Worries about others | 34.92 (29.84, 40.01) | 28.72 (26.64, 30.79) | -6.21 (-11.70, -0.71) | 0.027 |
| Worries | 32.74 (27.70, 37.79) | 32.66 (30.59, 34.73) | -0.09 (-5.54, 5.37) | 0.975 |
| Maintaining purpose | 62.09 (55.44, 68.75) | 65.55 (62.80, 68.29) | 3.45 (-3.75, 10.65) | 0.347 |
| Burden of illness | 20.73 (16.04, 25.41) | 18.44 (16.51, 20.36) | -2.29 (-7.35, 2.77) | 0.374 |
| Joint stiffness | 45.46 (39.86, 51.05) | 41.44 (39.11, 43.76) | -4.02 (-10.08, 2.03) | 0.193 |
| Family support | 65.26 (58.06, 72.46) | 59.91 (56.92, 62.91) | -5.35 (-13.14, 2.45) | 0.179 |

MASTECTOMY COHORT

| Time point | Domain | No radiotherapy | Radiotherapy | Treatment Effect | P value |
|------------------|-----------------------------|----------------------|----------------------|---------------------|---------|
| 6 weeks | Mobility | 26.86 (25.25, 28.47) | 27.80 (25.07, 30.53) | 0.94 (-2.23, 4.11) | 0.561 |
| | Worries about others | 36.60 (33.96, 39.24) | 39.96 (35.46, 44.46) | 3.36 (-1.86, 8.59) | 0.207 |
| | Worries | 33.35 (31.04, 35.65) | 36.38 (32.44, 40.31) | 3.03 (-1.53, 7.59) | 0.193 |
| | Maintaining purpose | 65.34 (62.28, 68.41) | 62.62 (57.45, 67.80) | -2.72 (-8.74, 3.30) | 0.375 |
| | Burden of illness | 30.00 (27.61, 32.40) | 35.54 (31.50, 39.59) | 5.54 (0.84, 10.24) | 0.021 |
| | Joint stiffness | 28.45 (26.18, 30.72) | 26.54 (22.73, 30.36) | -1.90 (-6.35, 2.54) | 0.400 |
| | Family support | 76.33 (73.60, 79.05) | 75.36 (70.72, 80.00) | -0.97 (-6.36, 4.42) | 0.724 |
| 6 months | Mobility | 27.43 (25.38, 29.48) | 26.41 (23.14, 29.69) | -1.02 (-4.89, 2.85) | 0.605 |
| | Worries about others | 31.96 (29.52, 34.40) | 32.47 (28.54, 36.40) | 0.51 (-4.13, 5.15) | 0.829 |
| | Worries | 30.46 (28.26, 32.66) | 33.31 (29.77, 36.86) | 2.86 (-1.32, 7.03) | 0.180 |
| | Maintaining purpose | 62.74 (59.11, 66.37) | 65.91 (60.13, 71.68) | 3.17 (-3.65, 9.99) | 0.362 |
| | Burden of illness | 23.64 (21.00, 26.29) | 33.31 (29.08, 37.54) | 9.66 (4.67, 14.66) | <0.001 |
| | Joint stiffness | 38.93 (36.27, 41.60) | 34.23 (29.96, 38.50) | -4.70 (-9.73, 0.33) | 0.067 |
| | Family support | 67.57 (64.18, 70.96) | 73.73 (68.29, 79.18) | 6.16 (-0.26, 12.59) | 0.060 |
| 12 months | Mobility | 30.35 (28.10, 32.60) | 31.69 (28.06, 35.31) | 1.34 (-2.94, 5.62) | 0.539 |
| | Worries about others | 33.71 (30.72, 36.69) | 35.25 (30.32, 40.19) | 1.55 (-4.23, 7.32) | 0.599 |
| | Worries | 34.25 (31.62, 36.88) | 35.01 (30.68, 39.34) | 0.76 (-4.31, 5.83) | 0.769 |
| | Maintaining purpose | 62.74 (59.07, 66.42) | 66.24 (60.23, 72.24) | 3.50 (-3.54, 10.53) | 0.329 |
| | Burden of illness | 20.69 (17.89, 23.49) | 26.39 (21.82, 30.96) | 5.70 (0.34, 11.06) | 0.037 |
| | Joint stiffness | 43.05 (40.13, 45.96) | 43.49 (38.79, 48.19) | 0.44 (-5.09, 5.97) | 0.875 |
| | Family support | 62.88 (59.13, 66.64) | 64.35 (58.07, 70.63) | 1.47 (-5.86, 8.81) | 0.693 |
| 18 months | Mobility | 31.35 (28.89, 33.80) | 33.12 (29.27, 36.98) | 1.78 (-2.81, 6.36) | 0.446 |
| | Worries about others | 30.12 (26.97, 33.27) | 32.71 (27.61, 37.81) | 2.59 (-3.42, 8.59) | 0.397 |
| | Worries | 30.62 (27.70, 33.54) | 34.66 (29.97, 39.35) | 4.04 (-1.49, 9.56) | 0.152 |
| | Maintaining purpose | 62.34 (58.06, 66.61) | 63.63 (56.83, 70.43) | 1.29 (-6.73, 9.31) | 0.752 |

| | | | | | |
|------------------|-----------------------------|----------------------|----------------------|----------------------|-------|
| | Burden of illness | 18.49 (15.53, 21.44) | 26.68 (21.98, 31.37) | 8.19 (2.64, 13.74) | 0.004 |
| | Joint stiffness | 41.22 (37.83, 44.61) | 43.32 (37.98, 48.66) | 2.10 (-4.22, 8.42) | 0.514 |
| | Family support | 64.45 (60.06, 68.84) | 63.54 (56.47, 70.60) | -0.92 (-9.24, 7.41) | 0.829 |
| 24 months | Mobility | 33.91 (30.96, 36.86) | 37.10 (32.70, 41.51) | 3.19 (-2.11, 8.49) | 0.237 |
| | Worries about others | 30.91 (27.45, 34.37) | 32.49 (27.21, 37.77) | 1.58 (-4.73, 7.89) | 0.622 |
| | Worries | 33.03 (29.73, 36.33) | 34.19 (29.14, 39.25) | 1.16 (-4.87, 7.20) | 0.704 |
| | Maintaining purpose | 61.34 (56.85, 65.82) | 56.54 (49.78, 63.30) | -4.80 (-12.90, 3.30) | 0.245 |
| | Burden of illness | 23.35 (19.43, 27.26) | 31.68 (25.77, 37.59) | 8.34 (1.25, 15.43) | 0.021 |
| | Joint stiffness | 41.93 (38.22, 45.65) | 47.60 (42.05, 53.16) | 5.67 (-1.02, 12.35) | 0.096 |
| | Family support | 61.53 (56.76, 66.30) | 59.73 (52.47, 66.99) | -1.81 (-10.49, 6.88) | 0.682 |

Supplementary Table 13 - Mean scores and 95% confidence intervals (CIs) adjusted for baseline score for the EQ-5D-5L scale at each timepoint in radiotherapy versus no radiotherapy cohorts.

| BREAST-CONSERVING SURGERY COHORT | | | | | |
|-----------------------------------------|--------------|------------------------|----------------------|----------------------------|----------------|
| Time point | Score | No radiotherapy | Radiotherapy | Treatment Effect | P value |
| 6 weeks | Score | 0.85 (0.83, 0.86) | 0.84 (0.83, 0.85) | -0.0081 (-0.0264, 0.0102) | 0.385 |
| | VAS | 76.22 (74.22, 78.23) | 76.46 (75.59, 77.33) | 0.23 (-1.96, 2.42) | 0.835 |
| 6 months | Score | 0.84 (0.81, 0.86) | 0.83 (0.82, 0.84) | -0.0021 (-0.0271, 0.0229) | 0.871 |
| | VAS | 76.64 (74.28, 79.00) | 76.24 (75.27, 77.20) | -0.40 (-2.96, 2.15) | 0.757 |
| 12 months | Score | 0.81 (0.79, 0.84) | 0.83 (0.82, 0.84) | 0.0145 (-0.0130, 0.0420) | 0.300 |
| | VAS | 73.62 (71.01, 76.23) | 76.03 (75.00, 77.07) | 2.41 (-0.40, 5.22) | 0.093 |
| 18 months | Score | 0.81 (0.78, 0.84) | 0.82 (0.81, 0.83) | 0.0107 (-0.0204, 0.0418) | 0.501 |
| | VAS | 73.02 (69.87, 76.16) | 75.01 (73.72, 76.30) | 1.99 (-1.41, 5.40) | 0.251 |
| 24 months | Score | 0.83 (0.80, 0.86) | 0.82 (0.80, 0.83) | -0.0148 (-0.0493, 0.0197) | 0.399 |
| | VAS | 73.53 (70.21, 76.85) | 74.56 (73.21, 75.90) | 1.03 (-2.56, 4.61) | 0.574 |
| MASTECTOMY COHORT | | | | | |
| Time point | Score | No radiotherapy | Radiotherapy | Treatment Effect | P value |
| 6 weeks | Score | 0.83 (0.81, 0.84) | 0.80 (0.79, 0.82) | -0.0202 (-0.0431, 0.0028) | 0.085 |
| | VAS | 74.76 (73.30, 76.22) | 74.03 (71.57, 76.49) | -0.73 (-3.59, 2.13) | 0.615 |
| 6 months | Score | 0.83 (0.82, 0.84) | 0.82 (0.80, 0.84) | -0.0095 (-0.0329, 0.0140) | 0.429 |
| | VAS | 75.77 (74.33, 77.20) | 75.45 (73.14, 77.76) | -0.31 (-3.03, 2.40) | 0.820 |
| 12 months | Score | 0.82 (0.81, 0.84) | 0.80 (0.78, 0.82) | -0.0254 (-0.0537, 0.0029) | 0.079 |
| | VAS | 74.98 (73.31, 76.66) | 74.70 (71.99, 77.40) | -0.29 (-3.47, 2.89) | 0.859 |
| 18 months | Score | 0.81 (0.79, 0.83) | 0.77 (0.74, 0.80) | -0.0387 (-0.0735, -0.0040) | 0.029 |
| | VAS | 74.29 (72.44, 76.15) | 71.83 (68.89, 74.77) | -2.46 (-5.94, 1.01) | 0.164 |
| 24 months | Score | 0.81 (0.80, 0.83) | 0.76 (0.73, 0.79) | -0.0511 (-0.0858, -0.0165) | 0.004 |
| | VAS | 73.77 (71.70, 75.85) | 72.29 (69.12, 75.45) | -1.49 (-5.27, 2.29) | 0.439 |

Supplementary Table 14 - Radiotherapy adverse events for patients receiving radiotherapy after breast-conserving surgery.

| | Events | Individuals |
|--------------------------|-----------------|--------------------|
| | N = 1385 | N = 1385 |
| Any adverse event | 629 | 620 (44.8%) |
| Skin erythema | 532 | 526 (38.0%) |
| Pain | 218 | 216 (15.6%) |
| Breast oedema | 77 | 76 (5.5%) |
| Breast shrinkage | 13 | 13 (0.9%) |

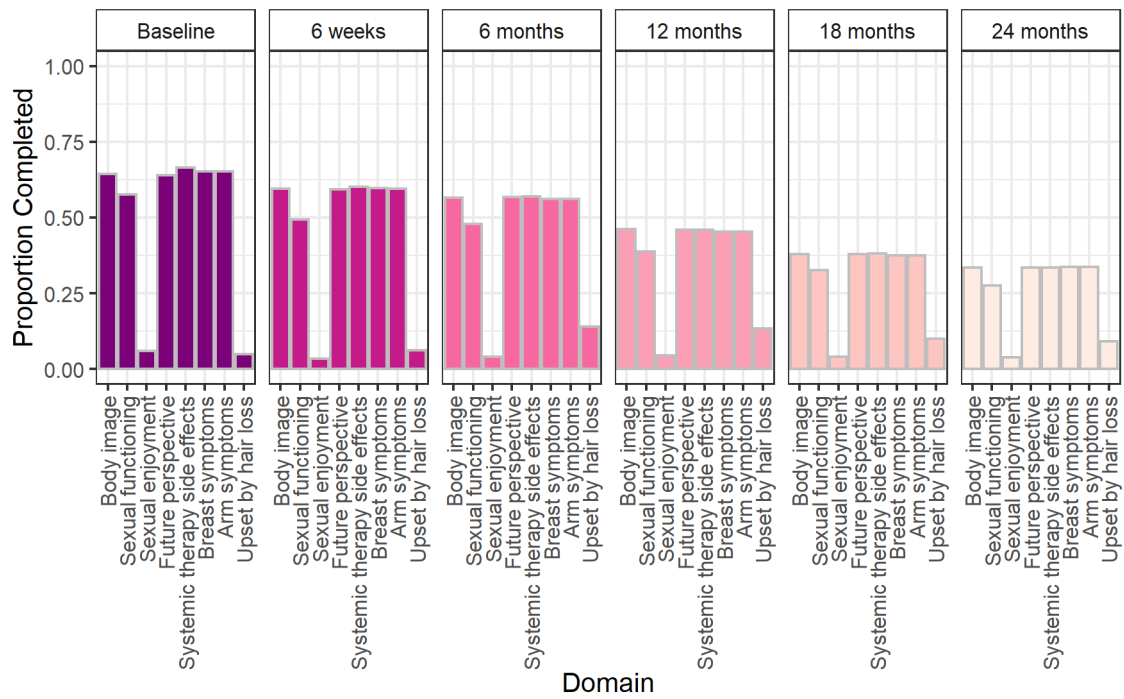
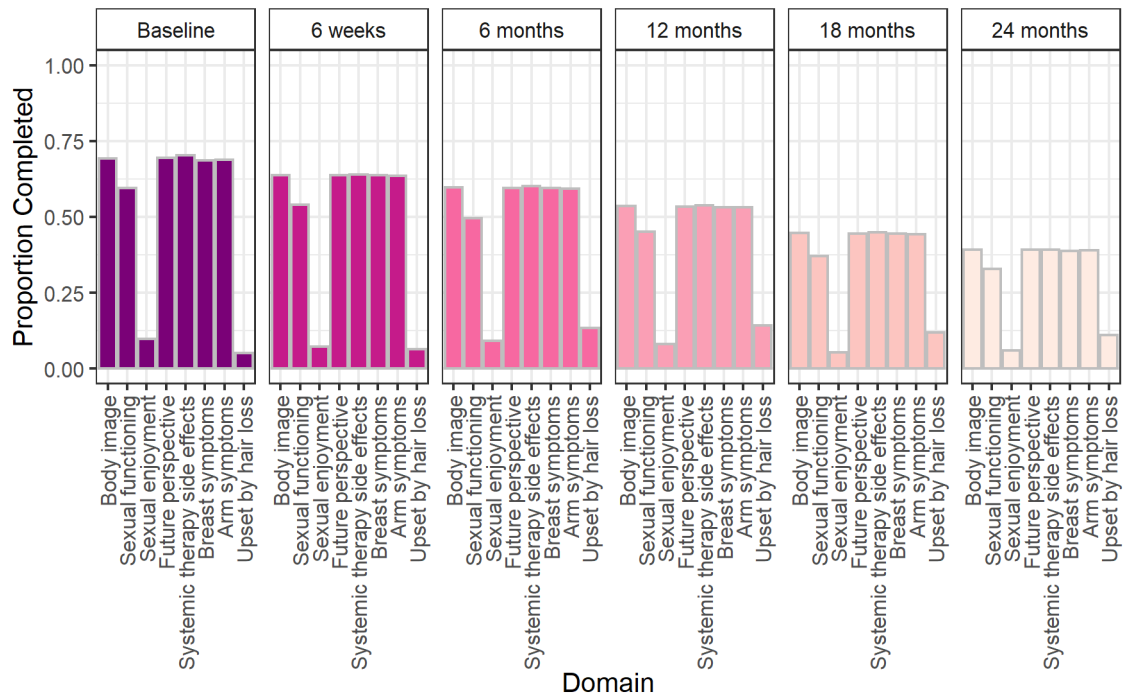
Supplementary Table 15 - Radiotherapy adverse events for patients receiving radiotherapy after a mastectomy.

| | Events | Individuals |
|--------------------------|----------------|--------------------|
| | N = 341 | N = 341 |
| Any adverse event | 158 | 157 (46.0%) |
| Skin erythema | 136 | 135 (39.6%) |
| Pain | 50 | 50 (14.7%) |
| Chest wall oedema | 12 | 12 (3.5%) |

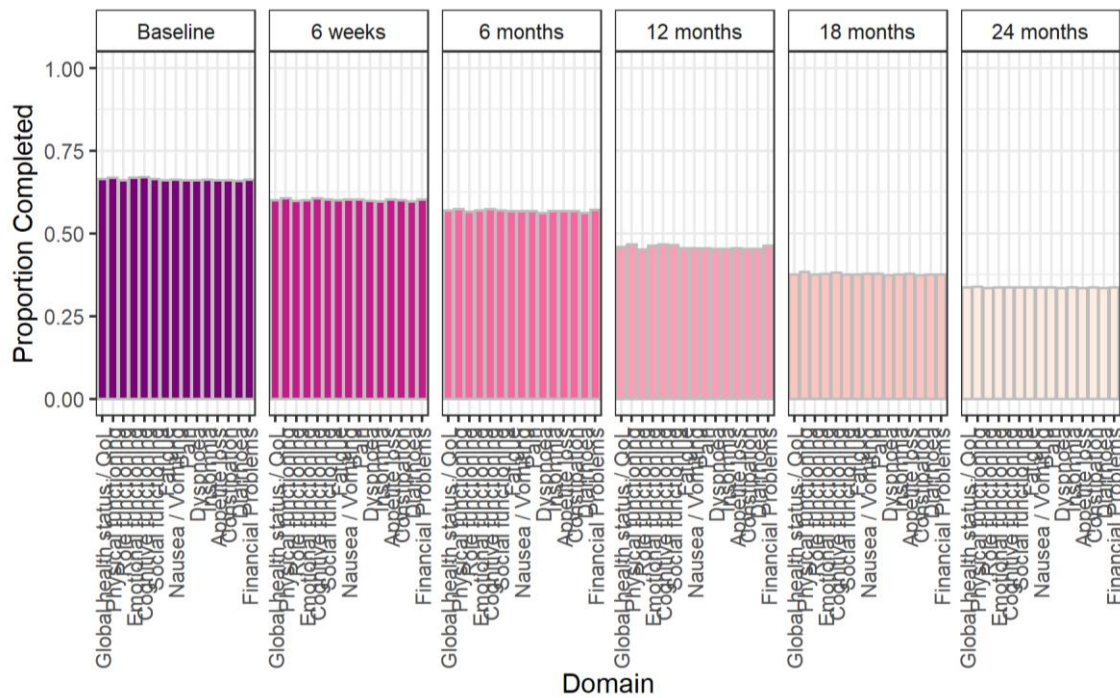
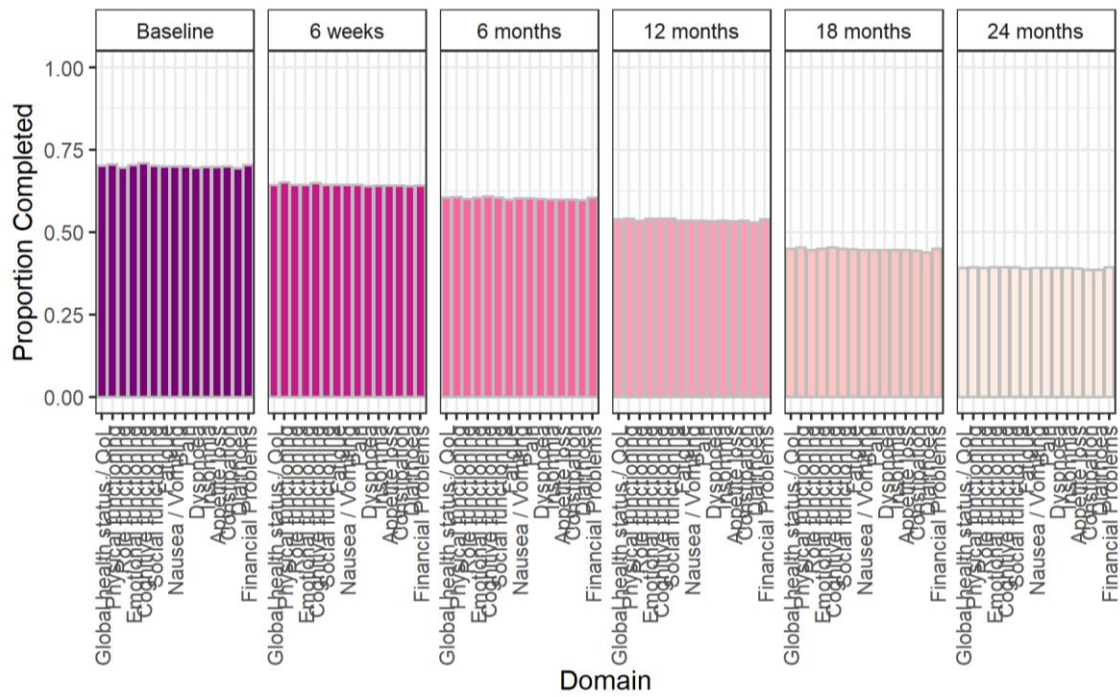
Supplementary Table 16 – Mortality rates in the overall cohort, in the breast-conserving surgery cohort and in the mastectomy cohort.

| | | OVERALL COHORT | | |
|-------------------------------------------------|------------|-----------------------------------------|---------------------|-----------------|
| | | No radiotherapy | Radiotherapy | Total |
| | | N = 1058 | N = 1753 | N = 2811 |
| Overall death (any cause) | n | 1041 | 1716 | 2757 |
| | No | 824 (79.2%) | 1469 (85.6%) | 2293 (83.2%) |
| | Yes | 217 (20.8%) | 247 (14.4%) | 464 (16.8%) |
| Death due to breast cancer-related cause | n | 1032 | 1706 | 2738 |
| | No | 955 (92.5%) | 1590 (93.2%) | 2545 (93.0%) |
| | Yes | 77 (7.5%) | 116 (6.8%) | 193 (7.0%) |
| | | BREAST-CONSERVING SURGERY COHORT | | |
| | | No radiotherapy | Radiotherapy | Total |
| | | N = 284 | N = 1385 | N = 1669 |
| Overall death (any cause) | n | 277 | 1354 | 1631 |
| | No | 229 (82.7%) | 1205 (89.0%) | 1434 (87.9%) |
| | Yes | 48 (17.3%) | 149 (11.0%) | 197 (12.1%) |
| Death due to breast cancer-related cause | n | 276 | 1348 | 1624 |
| | No | 267 (96.7%) | 1297 (96.2%) | 1564 (96.3%) |
| | Yes | 9 (3.3%) | 51 (3.8%) | 60 (3.7%) |
| | | MASTECTOMY COHORT | | |
| | | No radiotherapy | Radiotherapy | Total |
| | | N = 746 | N = 341 | N = 1087 |
| Overall death (any cause) | n | 737 | 336 | 1073 |
| | No | 574 (77.9%) | 243 (72.3%) | 817 (76.1%) |
| | Yes | 163 (22.1%) | 93 (27.7%) | 256 (23.9%) |
| Death due to breast cancer-related cause | n | 730 | 332 | 1062 |
| | No | 665 (91.1%) | 269 (81.0%) | 934 (87.9%) |
| | Yes | 65 (8.9%) | 63 (19.0%) | 128 (12.1%) |

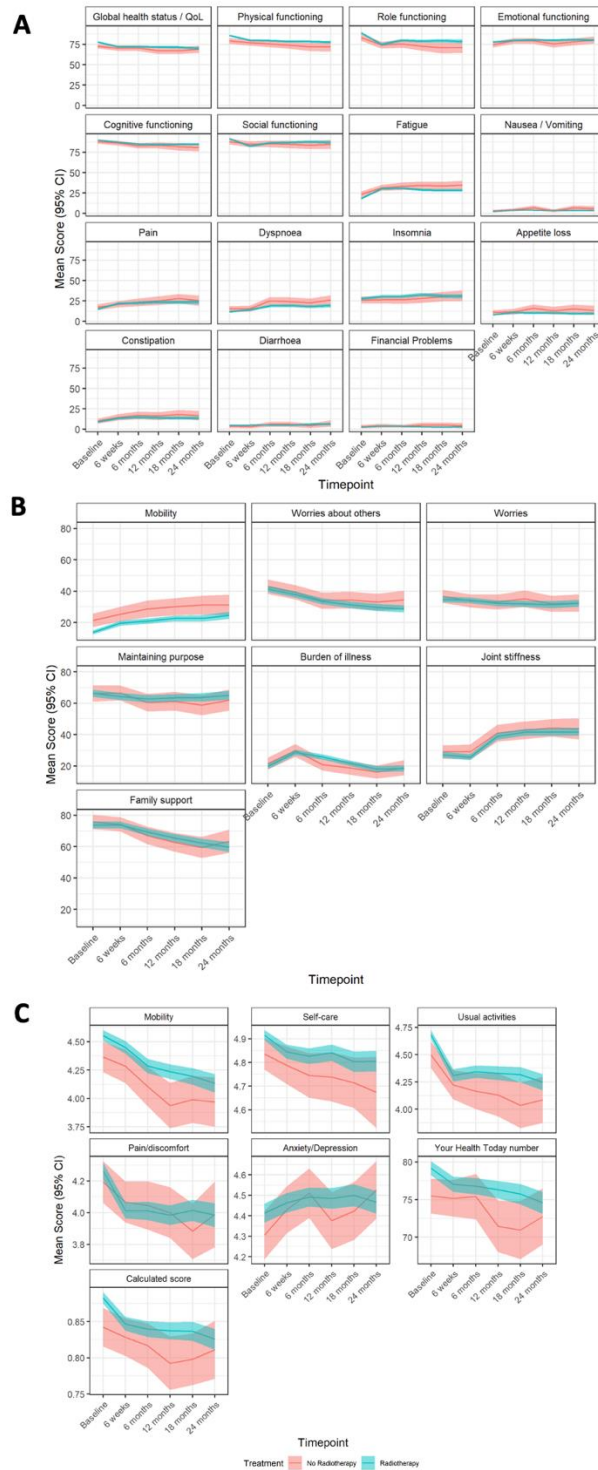
Supplementary Figure 1 – Completion of the EORTC-QLQ-BR23 at each time point in patient undergoing breast-conserving surgery (top) and in those undergoing a mastectomy (bottom).



Supplementary Figure 2 – Completion of the EORTC-QLQ-C30 at each time point in patient undergoing breast-conserving surgery (top) and in those undergoing a mastectomy (bottom).



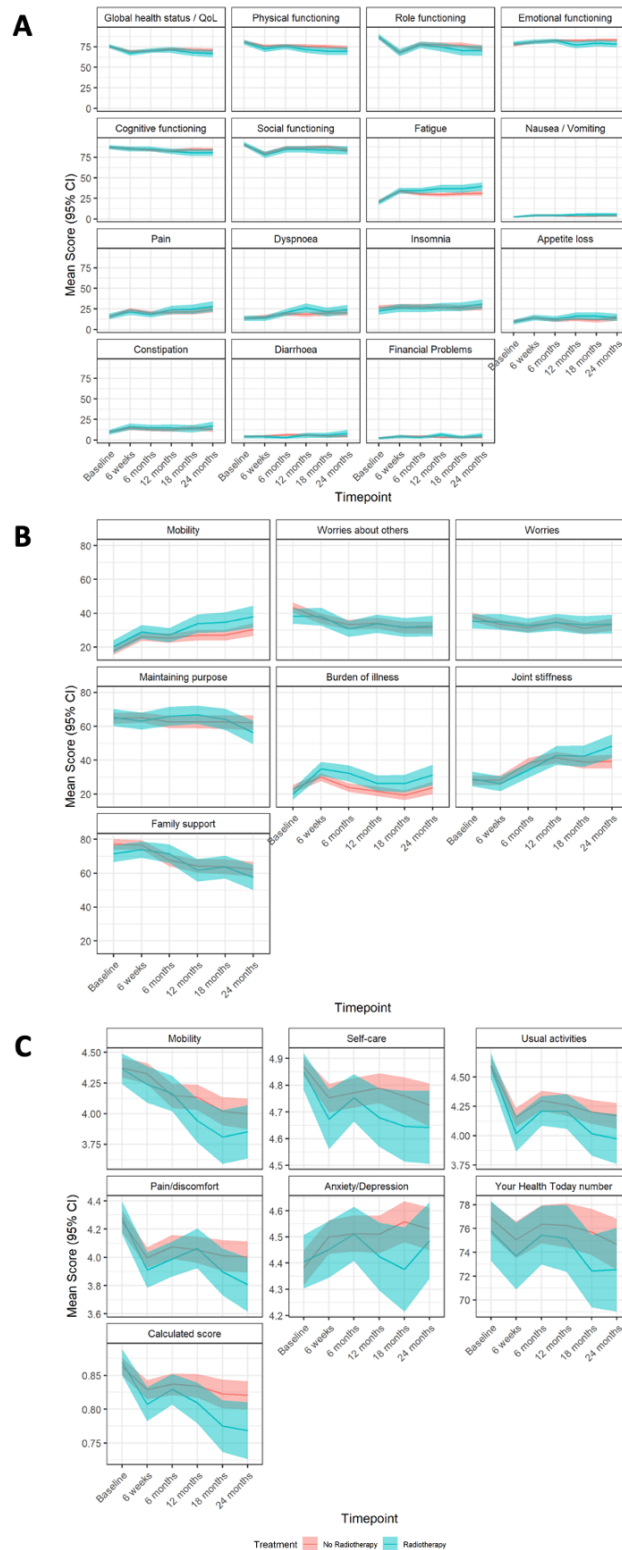
Supplementary Figure 4 – Mean (95% CI) scores over time points for the radiotherapy versus no radiotherapy population measured on the EORTC-QLQ-C30 (A), ELD15 (B) and EQ-5D-5L* scale (C) in patients undergoing breast-conserving surgery.^A



**the calculated score is a single summary number (index value) which reflects the health state in the context of the preferences of the general population of a country/region and is derived by applying a formula attaching weights to each of the levels in each dimension as per the EQ-5D-5L User Guide.*

^AA high score for a functional scale represents a high/healthy level of functioning; a high score for the global health status/QoL represents a high QoL, whilst a high score for a symptom scale represents a high level of symptomology/problems.

Supplementary Figure 5 – Mean (95% CI) scores over time points for the radiotherapy versus no radiotherapy population measured on the EORTC-QLQ-C30 (A), ELD15 (B) and EQ-5D-5L* scale (C) in patients undergoing a mastectomy.^



*the calculated score is a single summary number (index value) which reflects the health state in the context of the preferences of the general population of a country/region and is derived by applying a formula attaching weights to each of the levels in each dimension as per the EQ-5D-5L User Guide.

^A high score for a functional scale represents a high/healthy level of functioning; a high score for the global health status/QoL represents a high QoL, whilst a high score for a symptom scale represents a high level of symptomology/problems.

