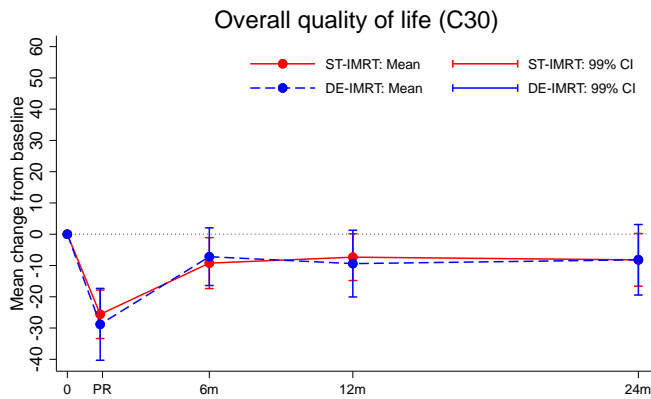
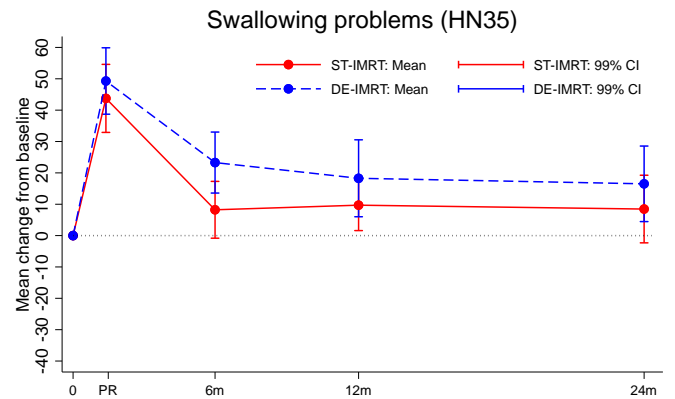


Figure 3 Patient-reported outcomes – mean change from baseline score by treatment group for (A) QLQ C30 – overall quality of life, (B) HN35 – swallowing problems, (C) HN35 – dry mouth, (D) HN35 – speech problems. In panel A, a *negative* change score indicates a *worsening* from baseline. In panels, B, C and D – a *positive* change score indicates a *worsening* from baseline score. PR=After radiotherapy

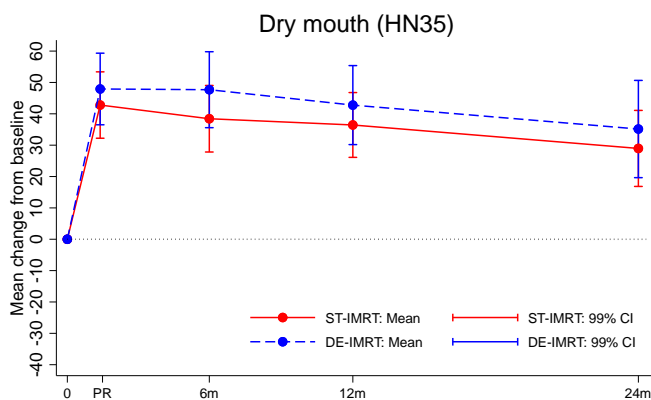
(A)



(B)



(C)



(D)

