

Association Between New Unconfirmed Bone Lesions and Outcomes in Men With Metastatic Castration-Resistant Prostate Cancer Treated With Enzalutamide

Secondary Analysis of the PREVAIL and AFFIRM Randomized Clinical Trials

Andrew J. Armstrong, MD, ScM; Mohammed Al-Adhami, PhD; Ping Lin, PhD; Teresa Parli, MD; Jennifer Sugg, MS; Joyce Steinberg, MD; Bertrand Tombal, MD, PhD; Cora N. Sternberg, MD; Johann de Bono, MD, PhD; Howard I. Scher, MD; Tomasz M. Beer, MD

IMPORTANCE For men with metastatic castration-resistant prostate cancer (mCRPC) whose condition is responding to enzalutamide, new unconfirmed bone lesions detected at posttreatment scintigraphy may reflect an osteoblastic reaction that represents healing, known as pseudoprogression, which can lead to premature discontinuation of therapy.

OBJECTIVE To determine the association between new unconfirmed lesions detected on a follow-up bone scintigram (bone scan) and outcomes in enzalutamide-treated men with mCRPC.

DESIGN, SETTING, AND PARTICIPANTS This post hoc, retrospective secondary analysis of 1672 enzalutamide-treated men from 2 phase 3, randomized mCRPC studies (PREVAIL and AFFIRM) before or after treatment with docetaxel was conducted from April 12, 2018, to July 25, 2019. Participants were men from the enzalutamide groups of the 2 studies with a decrease in prostate-specific antigen level at any time or with stable disease or soft-tissue disease responding to treatment based on radiologic findings.

INTERVENTION Enzalutamide, 160 mg once daily.

MAIN OUTCOMES AND MEASURES The clinical significance of new lesions detected on the first (early) or second (late) posttreatment bone scan, without an unfavorable change in prostate-specific antigen level or soft-tissue progression, was investigated. Associations of new unconfirmed lesions with radiographic progression-free survival, overall survival, decrease in prostate-specific antigen level, objective response in soft tissue, and quality of life were evaluated.

RESULTS Among the 643 men (median age, 72 years [range, 43-93 years]) in PREVAIL, early and late unconfirmed lesions were observed in 177 men (27.5%) with stable disease or disease responding to enzalutamide. Among the 404 men (median age, 70 years [range, 41-88 years]) in AFFIRM, early and late unconfirmed lesions were observed in 73 men (18.1%) with stable disease or disease responding to enzalutamide. In PREVAIL, men with new unconfirmed lesions had median radiographic progression-free survival (hazard ratio [HR], 1.37 [95% CI, 0.81-2.30]; $P = .23$) and median overall survival (HR, 1.25 [95% CI, 0.85-1.83]) in the chemotherapy-naïve setting similar to men those of men without such new lesions. In AFFIRM, the median overall survival (HR, 1.94 [95% CI, 1.10-3.44]) was reduced among men with unconfirmed bone lesions, but the median radiographic progression-free survival was not reduced (HR, 1.21 [95% CI, 0.83-1.75]; $P = .32$). Quality of life over time was similar regardless of the presence of new unconfirmed lesions detected on a follow-up bone scan in either setting.

CONCLUSIONS AND RELEVANCE These results suggest that new unconfirmed lesions detected on follow-up bone scans may represent pseudoprogression in men with mCRPC and are indicative of a favorable treatment response to enzalutamide. The detection of new unconfirmed bone lesions in men with mCRPC that responded to treatment with enzalutamide after docetaxel appears to be associated with worse overall survival and may represent true progression, thus highlighting the need for improved functional bone metastasis imaging.

TRIAL REGISTRATION ClinicalTrials.gov Identifiers: [NCT01212991](https://clinicaltrials.gov/ct2/show/study/NCT01212991) and [NCT00974311](https://clinicaltrials.gov/ct2/show/study/NCT00974311)

JAMA Oncol. 2020;6(2):217-225. doi:10.1001/jamaoncol.2019.4636
Published online December 12, 2019.

← [Invited Commentary page 225](#)

+ [Supplemental content](#)

Author Affiliations: Author affiliations are listed at the end of this article.

Corresponding Author: Andrew J. Armstrong, MD, ScM, Division of Medical Oncology and Urology, Duke Cancer Institute, Duke University, DUMC PO Box 103861, Durham, NC 27710 (andrew.armstrong@duke.edu).

Technetium (Tc) 99m-labeled methylene diphosphate bone scans are commonly used to both assess and monitor disease progression in bone for men with metastatic castration-resistant prostate cancer (mCRPC), indirectly inferring disease activity based on osteoblastic uptake. It has long been appreciated that bone scans can be misleading in determining whether a patient with bone metastases is benefiting from a treatment, and, in particular, from hormones.^{1,2} Per the Prostate Cancer Working Group 2 (PCWG2) recommendations, as retained in the PCWG3 guidelines, the assessment of disease progression in bone in the absence of other signs of progression requires that new lesions detected on the first post-treatment scan be confirmed with the documentation of additional new lesions on the next follow-up scan in the absence of other signs of progression.^{3,4} New unconfirmed bone lesions detected on the first follow-up scan after treatment may either reflect true progression before overall treatment outcomes can be assessed reliably or be the result of a healing response known as pseudoprogression (also known as bone scan flare) that can be misinterpreted as treatment failure and lead to the premature discontinuation of therapy.⁵⁻⁷

Pseudoprogression has been described in men with noncastrate prostate cancer⁷ and in men with chemotherapy-naive mCRPC treated with abiraterone acetate, an androgen biosynthesis inhibitor,⁵ but it has not been formally associated with clinical outcomes in large prospective studies or been examined in men with mCRPC treated with enzalutamide, an androgen receptor inhibitor. We hypothesized that early unconfirmed lesions detected on follow-up bone scans of men with mCRPC during treatment response to enzalutamide would commonly represent pseudoprogression, irrespective of prior exposure to chemotherapy, and would be associated with outcomes similar to those in patients who are responding to treatment as assessed by other means. We also assessed whether new lesions detected on the second posttreatment scan could also reflect a delayed form of pseudoprogression.

Methods

Study Design and Conduct

From April 12, 2018, to July 25, 2019, we conducted a post hoc retrospective analysis of the PREVAIL (A Safety and Efficacy Study of Oral MDV3100 in Chemotherapy-Naive Patients With Progressive Metastatic Prostate Cancer; [NCT01212991](#)) and AFFIRM (Safety and Efficacy Study of MDV3100 in Patients With Castration-Resistant Prostate Cancer Who Have Been Previously Treated With Docetaxel-based Chemotherapy; [NCT00974311](#)) phase 3 prospective randomized clinical trial data sets (trial protocols in [Supplement 1](#)). The study designs of PREVAIL⁸ and AFFIRM⁹ have previously been described. Participants in PREVAIL were men with mCRPC who were asymptomatic or minimally symptomatic and who had not received prior chemotherapy. Participants in AFFIRM were men with mCRPC who had received prior treatment with docetaxel. The coprimary end points of PREVAIL were overall survival (OS) and radiographic progression-free survival (rPFS).

Key Points

Question What is the association between new lesions detected on a first follow-up bone scan and outcomes in enzalutamide-treated men with metastatic castration-resistant prostate cancer with a stable or decreasing prostate-specific antigen level and regressing soft-tissue disease?

Findings This secondary analysis of the PREVAIL and AFFIRM randomized clinical trials found that chemotherapy-naive men with new early bone lesions whose condition was stable or responding to enzalutamide had similar progression-free and overall survival times and a quality of life similar to that of men without new lesions whose condition was responding to enzalutamide; however, overall survival after chemotherapy may have a negative association with new bone lesions.

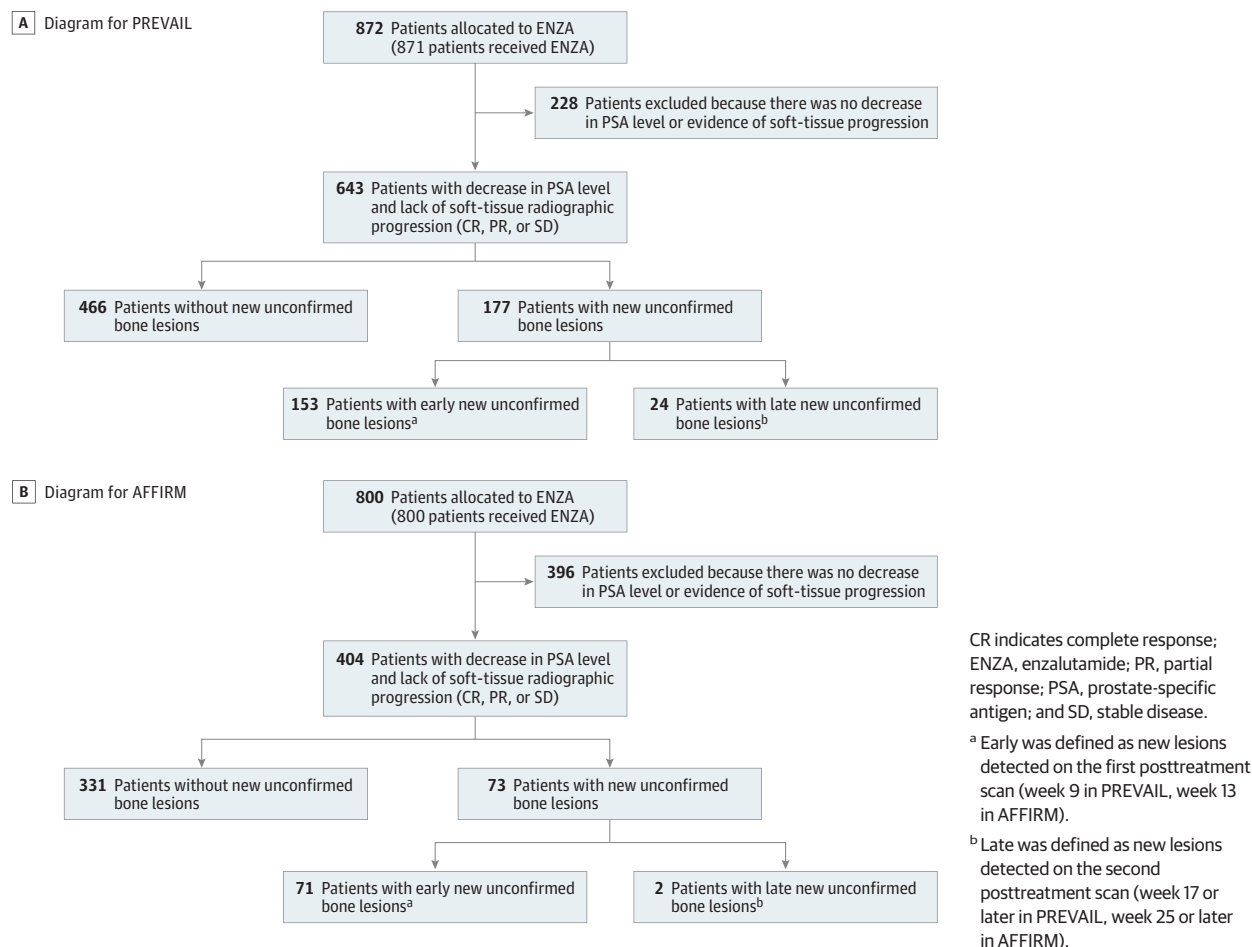
Meaning These findings reinforce the importance of avoiding premature discontinuation of treatment based on new unconfirmed lesions detected on a follow-up bone scan in men with metastatic castration-resistant prostate cancer whose condition is stable or responding to enzalutamide, and the importance of functional imaging for diagnosing bone metastases.

The primary end point of AFFIRM was OS. These studies were conducted in accordance with the Declaration of Helsinki,¹⁰ and the Duke University Institutional Review Board approved the PREVAIL and AFFIRM protocols, which specifically covered the objectives of the present analysis to examine the association of radiographic progression with overall survival, including bone scan progression. The PREVAIL and AFFIRM protocols were approved by the institutional review boards at all participating sites. All participants provided written informed consent before enrollment.

Analysis of Pseudoprogression

For the present analysis, only enzalutamide-treated men with mCRPC were evaluated, and the focus was on men with stable disease or disease responding to therapy according to nonbone disease manifestations, including prostate-specific antigen (PSA) level and soft-tissue criteria ([Figure 1](#)). Thus, men with no decrease in PSA level or with soft-tissue progression confirmed by radiography were excluded from the bone-scan pseudoprogression analysis. Tc 99m-labeled methylene diphosphate bone scans were performed and interpreted locally at each center, but they were also analyzed centrally for each study. Scans were performed at weeks 9, 17, and 25 and every 12 weeks thereafter in PREVAIL and at weeks 13 and 25 and, subsequently, every 12 weeks thereafter in AFFIRM. Pseudoprogression was defined as the detection of 1 or more new lesions on a first or second postbaseline bone scan, without subsequent new lesions detected on later scans for men with any decrease in PSA level from baseline or those with a complete response, partial response, or stable disease in soft tissue based on the Response Evaluation Criteria in Solid Tumors, version 1.1 (RECIST v1.1).¹¹ The definition was further refined to differentiate between early and late pseudoprogression. Early pseudoprogression was defined as new lesions detected on the first posttreatment scan in men with disease otherwise responding to treatment (week 9 in

Figure 1. CONSORT Diagrams for PREVAIL and AFFIRM



PREVAIL and week 13 in AFFIRM), without subsequent new lesions detected at later assessments (week 17 or later in PREVAIL and week 25 or later in AFFIRM). Late pseudoprogession was defined as new lesions detected on the second posttreatment scan in men with disease otherwise responding to treatment (week 17 in PREVAIL and week 25 in AFFIRM), without subsequent new lesions detected at later assessments.

Statistical Analysis

The primary objective of the present analysis was to determine whether new lesions detected on bone scans were associated with enzalutamide treatment efficacy based on OS, rPFS, confirmed decreases in PSA level and time to PSA progression, changes in serum alkaline phosphatase levels over time, objective response rates by soft-tissue imaging, and quality of life over time.^{8,9} Estimates of the median and 95% CIs for the time-to-event analyses were determined using the Kaplan-Meier method. The hazard ratio (HR) was determined using an unstratified Cox proportional hazards regression model and was relative to men without new unconfirmed lesions detected on bone scans. An unstratified Cochran-Mantel-Haenszel mean test score was used for comparisons of PSA response rates and best overall soft-tissue response rates.

For PREVAIL, the data cutoff date was September 16, 2013, for OS, time to PSA progression, Functional Assessment of Cancer Therapy-Prostate Cancer (FACT-P) degradation, and best overall soft-tissue response (per RECIST v1.1) and was May 6, 2012, for rPFS. The data on FACT-P were collected at day 1, weeks 5 and 13, and every 12 weeks thereafter. For AFFIRM, the data cutoff date was September 25, 2011, for all end points. The data on FACT-P were collected at baseline and then at every regular study visit beginning at week 13. Analyses were performed with SAS Enterprise Guide, version 7.1 (SAS Institute Inc). All *P* values were from 2-sided tests, and results were deemed statistically significant at *P* < .05 for the associations of new unconfirmed bone scan lesions with each individual efficacy outcome.

Results

Patient Disposition

In PREVAIL, 872 men were assigned to receive enzalutamide; 643 had a decrease in PSA level at any time or had soft-tissue responses or stable disease. Of these 643 men, 177 (27.5%) had new unconfirmed bone lesions detected on the first or second posttreatment scan, which led to treatment discontinuation for

Table. Summary of Trial Outcomes

| Characteristic | Men in the PREVAIL Trial | | Men in the AFFIRM Trial | |
|-------------------------------------------------------------------------|------------------------------------------------------------------------|---------------------------------------------------------------------------|-----------------------------------------------------------------------|---------------------------------------------------------------------------|
| | Responding to Enzalutamide With New Unconfirmed Bone Lesions (n = 177) | Responding to Enzalutamide Without New Unconfirmed Bone Lesions (n = 466) | Responding to Enzalutamide With New Unconfirmed Bone Lesions (n = 73) | Responding to Enzalutamide Without New Unconfirmed Bone Lesions (n = 331) |
| Median rPFS (95% CI), mo | NR (12.3 to NR) | NR (14.1 to NR) | 13.6 (11.1 to 16.5) | 13.9 (13.6 to 16.5) |
| HR (95% CI) | 1.37 (0.81 to 2.30) | | 1.21 (0.83 to 1.75) | |
| P value | .23 | | .32 | |
| Median OS (95% CI), mo | NR (NR to NR) | 32.4 (31.5 to NR) | NR (16.5 to NR) | NR (NR to NR) |
| HR (95% CI) | 1.25 (0.85 to 1.83) | | 1.94 (1.10 to 3.44) | |
| Median time to PSA progression (95% CI), mo | 12.0 (11.1 to 13.9) | 13.9 (13.7 to 16.6) | 8.4 (8.3 to 11.0) | 11.0 (8.5 to 11.1) |
| HR (95% CI) | 1.16 (0.93 to 1.45) | | 1.29 (0.93 to 1.81) | |
| Decrease in PSA level \geq 30% from baseline (95% CI), % ^a | 98.9 (96.0 to 99.9) | 98.1 (96.4 to 99.1) | 98.6 (92.6 to 100.0) | 97.3 (94.9 to 98.7) |
| Difference (95% CI), % | 0.8 (-1.2 to 2.8) | | 1.4 (-1.8 to -4.5) | |
| P value | .48 | | .50 | |
| Decrease in PSA level \geq 50% from baseline (95% CI), % ^a | 93.8 (89.2 to 96.9) | 93.6 (90.9 to 95.6) | 94.5 (86.6 to 98.5) | 89.1 (85.3 to 92.3) |
| Difference (95% CI), % | 0.2 (-4.0 to 4.4) | | 5.4 (-0.8 to 11.6) | |
| P value | .92 | | .16 | |
| Decrease in PSA level \geq 90% from baseline (95% CI), % ^a | 59.9 (52.3 to 67.2) | 60.9 (56.3 to 65.4) | 37.0 (26.0 to 49.1) | 49.8 (44.3 to 55.4) |
| Difference (95% CI), % | -1.1 (-9.5 to 7.4) | | -12.9 (-25.2 to -0.6) | |
| P value | .81 | | .05 | |
| Objective response rate (95% CI), % ^b | 67.5 (58.1 to 76.0) | 60.1 (54.2 to 65.9) | 50.0 (36.1 to 63.9) | 44.4 (37.7 to 51.3) |
| Difference (95% CI), % | 7.4 (-2.9 to 17.7) | | 5.6 (-9.3 to 20.5) | |
| P value | .17 | | .46 | |

Abbreviations: AFFIRM, Safety and Efficacy Study of MDV3100 in Patients With Castration-Resistant Prostate Cancer Who Have Been Previously Treated With Docetaxel-based Chemotherapy; HR, hazard ratio; NR, not reached; OS, overall survival; PREVAIL, A Safety and Efficacy Study of Oral MDV3100 in Chemotherapy-Naive Patients With Progressive Metastatic Prostate Cancer; PSA, prostate-specific antigen; rPFS, radiographic progression-free survival.

^a Includes confirmed and unconfirmed response.

^b Calculated by excluding nonevaluable patients (PREVAIL, n = 63 with new bone lesions and n = 180 without new bone lesions; and AFFIRM, n = 19 with new bone lesions and n = 115 without new bone lesions).

13 men based on the first posttreatment scan and for 3 men based on the second posttreatment scan (Figure 1A). In AFFIRM, 800 men were assigned to receive enzalutamide; 404 had a decreased PSA level at any time or had soft-tissue responses or stable disease, and 73 of these 404 men (18.1%) had new unconfirmed bone lesions, none of whom discontinued treatment owing to unconfirmed bone lesions (Figure 1B). Most of the new unconfirmed bone lesions were detected on the first posttreatment scan and were considered to be associated with pseudoprogression until proven otherwise. New unconfirmed bone lesions detected on the second posttreatment scan were seen in 24 of 643 men (3.7%) with disease otherwise responding to treatment in PREVAIL and in 2 of 404 men (0.5%) with disease otherwise responding to treatment in AFFIRM.

Data on demographic characteristics and baseline disease characteristics were generally similar between men with and men without new unconfirmed bone lesions in both PREVAIL (median age, 72 years [range, 43-93 years]) and AFFIRM (median age, 70 years [range, 41-88 years]) (eTables 1 and 2 in Supplement 2). No pretreatment characteristics were associated with the detection or nondetection of new unconfirmed lesions on follow-up bone scans in patients considered to be responding to treatment based on PSA or soft-tissue criteria, including the following: age, race/ethnicity, Gleason score,

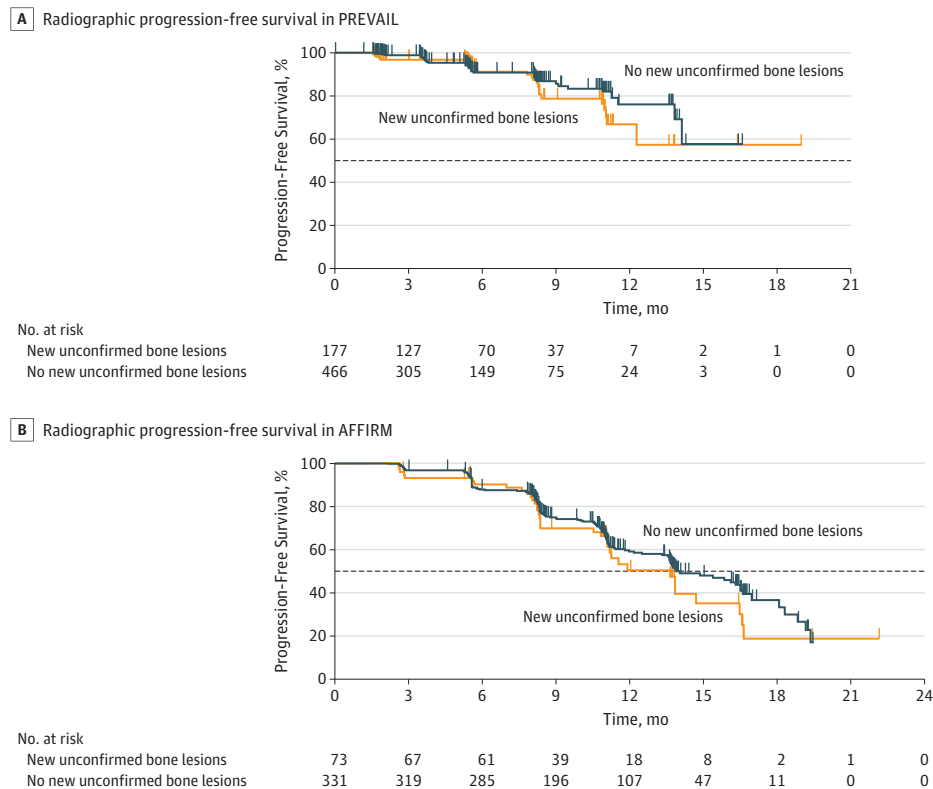
PSA levels, the burden of bone metastases, the number of prior hormonal therapies, or the use of bone antiresorptive therapies. The prevalence of new unconfirmed bone lesions ranged from 1 of 8 (12.5%) to 37 of 101 (36.6%) in PREVAIL and from 1 of 14 (7.1%) to 7 of 26 (26.9%) in AFFIRM, based on these various subgroups (eTables 1 and 2 in Supplement 2).

Association of Bone Scan Pseudoprogression With Efficacy

In PREVAIL, chemotherapy-naive men with stable disease or disease responding to enzalutamide who developed new unconfirmed lesions detected on follow-up bone scans (n = 177) had outcomes of rPFS (HR, 1.37; 95% CI, 0.81-2.30; $P = .23$) (Table and Figure 2A), OS (HR, 1.25; 95% CI, 0.85-1.83) (Table and Figure 3A), and time to PSA progression (HR, 1.16; 95% CI, 0.93-1.45) similar to those in men treated with enzalutamide whose disease was responding to treatment by PSA or soft-tissue standards with no new unconfirmed lesions detected on follow-up bone scans (Table; eFigure 1A in Supplement 2). Soft-tissue responses and decreases in PSA level did not significantly differ between men with and men without new unconfirmed lesions detected on follow-up bone scans (Table; eFigure 2A in Supplement 2).

In AFFIRM, we also observed that men with stable disease or disease responding to treatment after docetaxel who

Figure 2. Radiographic Progression-Free Survival (rPFS) in PREVAIL and AFFIRM Among Men Treated With Enzalutamide Who Had a Decrease in Prostate-Specific Antigen Level or an Objective Soft-Tissue Response, With or Without New Unconfirmed Lesions Detected on Follow-up Bone Scans Over Time



A, Median rPFS in PREVAIL among men with new unconfirmed bone lesions ($n = 177$), not reached (NR [95% CI, 12.3 months to NR]); and median rPFS in PREVAIL among men with no new unconfirmed bone lesions ($n = 466$), NR (95% CI, 14.1 months to NR); hazard ratio, 1.37 (95% CI, 0.81-2.30); $P = .23$. B, Median rPFS in AFFIRM among men with new unconfirmed bone lesions

($n = 73$), 13.6 months (95% CI, 11.1-16.5 months); and median rPFS in AFFIRM among men with no new unconfirmed bone lesions ($n = 331$), 13.9 months (95% CI, 13.6-16.5 months); hazard ratio, 1.21 (95% CI, 0.83-1.75); $P = .32$. Horizontal dashed lines indicate the median.

were treated with enzalutamide and developed new unconfirmed lesions detected on follow-up bone scans ($n = 73$) had rPFS (HR, 1.21; 95% CI, 0.83-1.75; $P = .32$) (Table and Figure 2B) and time to PSA progression (HR, 1.29; 95% CI, 0.93-1.81) outcomes similar to men with disease responding to enzalutamide who had no new unconfirmed lesions detected on follow-up bone scans (Table; eFigure 1B in Supplement 2). In addition, soft-tissue responses and decreases in PSA level did not significantly differ between men with and men without new unconfirmed lesions (Table; eFigure 2B in Supplement 2). However, OS was significantly worse in men with new unconfirmed lesions detected on follow-up bone scans (HR, 1.94; 95% CI, 1.10-3.44; Table and Figure 3B).

A higher proportion of men with no decrease in PSA level or with bone or soft-tissue disease progression with enzalutamide treatment had an increase in serum alkaline phosphatase level over time compared with patients whose disease was responding to enzalutamide with or without new unconfirmed bone lesions, in both PREVAIL and AFFIRM (eFigure 3 in Supplement 2). A higher proportion of men whose disease was responding to enzalutamide with or without new unconfirmed bone lesions had an increase in alkaline phosphatase

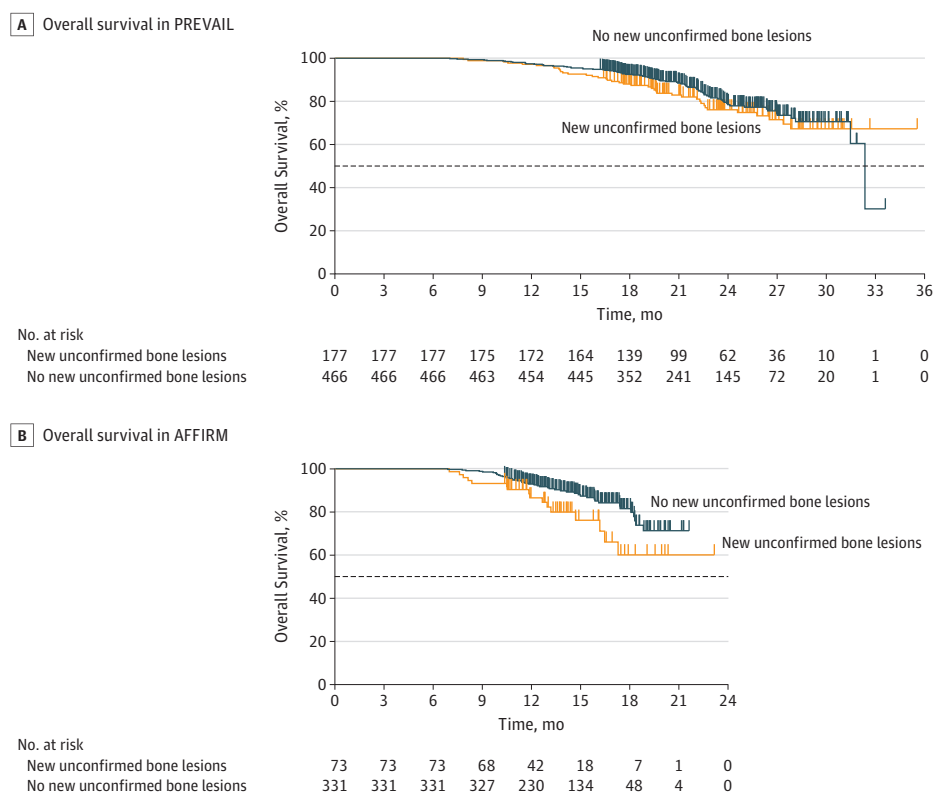
level at week 13 and had a subsequent decrease compared with men with no decrease in PSA level or with bone scan or soft-tissue progression in PREVAIL and AFFIRM (eFigure 4 in Supplement 2).

Association of Pseudoprogression With Quality of Life

In PREVAIL, men with new unconfirmed lesions detected on follow-up bone scans had a quality of life over time similar to that of men whose disease was responding to enzalutamide without new lesions detected on follow-up bone scans. We found no association of these newly observed unconfirmed bone metastases with time to degradation of FACT-P global score (HR, 1.03; 95% CI, 0.81-1.32; $P = .79$) or any subdomain thereof, or with time to pain progression (HR, 1.11; 95% CI, 0.80-1.53; $P = .54$) (eTable 3 in Supplement 2).

In AFFIRM, new unconfirmed bone lesions also had no association with time to degradation of FACT-P global score (HR, 0.95; 95% CI, 0.64-1.41; $P = .81$) or any subdomain (eTable 3 in Supplement 2). Time to pain progression was not associated with these newly observed unconfirmed bone lesions (HR, 1.04; 95% CI, 0.61-1.76; $P = .89$) (eTable 3 in Supplement 2).

Figure 3. Overall Survival (OS) in PREVAIL and AFFIRM Among Men Treated With Enzalutamide Who Had a Decrease in Prostate-Specific Antigen Level or an Objective Soft-Tissue Response, With or Without New Unconfirmed Lesions Detected on Follow-up Bone Scans Over Time



A, Median OS in PREVAIL among men with new unconfirmed bone lesions (n = 177), not reached (NR [95% CI, NR to NR]); and median OS in PREVAIL among men with no new unconfirmed bone lesions (n = 466), 32.4 months (95% CI, 31.5 months to NR); hazard ratio, 1.25 (95% CI, 0.85-1.83). B, Median

OS in AFFIRM among men with new unconfirmed bone lesions (n = 73), NR (95% CI, 16.5 months to NR); and median OS in AFFIRM among men with no new unconfirmed bone lesions (n = 331), NR; hazard ratio, 1.94 (95% CI, 1.10-3.44). Horizontal dashed lines indicate the median.

Discussion

Whether new lesions detected on posttreatment bone scans, in the setting of treatment response as defined by nonbone disease outcomes, represent a favorable treatment response or disease progression can be challenging to determine in men with metastatic prostate cancer, in part because Tc 99m-labeled methylene diphosphonate imaging reveals osteoblastic activity and does not directly depict the cancer. The PCWG2 guidelines³ prioritize maximizing the opportunity to benefit from treatment by discouraging the premature discontinuation of therapy based on the detection of new unconfirmed bone lesions on a first follow-up scan without confirming that additional new lesions were detected on a second posttreatment scan. The occurrence of pseudoprogression is well documented; however, the association with disease outcomes has not been systematically evaluated, to our knowledge.^{5,7} Here we studied the survival and key secondary outcomes among men in whom new unconfirmed lesions detected on follow-up bone scans were or were not observed using cohorts of men enrolled in large-scale randomized clinical trials. The PREVAIL and AFFIRM trials were designed in accordance

with the PCWG2 guidelines.³ Only 16 men in PREVAIL and no men in AFFIRM discontinued treatment because of unconfirmed lesions detected on follow-up bone scans, which demonstrates the successful implementation of the guidelines and may have resulted in more men maintaining clinical benefit from enzalutamide.

In our analysis, the following findings are important to highlight. First, new unconfirmed lesions detected on the first posttreatment bone scan in 2 large phase 3 trials were observed in 18.1% to 27.5% of men with mCRPC whose disease was otherwise responding to enzalutamide. Second, these new unconfirmed lesions were associated with similar clinical outcomes in chemotherapy-naïve men with mCRPC and, thus, likely represent a healing response and pseudoprogression. However, such new unconfirmed bone lesions in the postdocetaxel mCRPC setting were associated with a decrease in OS, although no differences were seen in the secondary end points of rPFS and time to PSA progression. These results suggest that newly observed lesions in some men with mCRPC who had received prior docetaxel may more likely reflect the first evidence of true progression. In addition, differences in pseudoprogression in earlier settings may reflect the higher probability and quality and durability of responses earlier in the course

of mCRPC, when disease is less heterogeneous. Given these findings, we recommend a patient-level decision around the clinical benefits of continuing therapy, based not solely on bone scan findings but also on other disease manifestations, including pain, toxic effects, serum markers such as PSA and alkaline phosphatase levels, and soft-tissue disease as well as patient preference and informed decision-making.

There was no pretreatment factor associated with the development of new unconfirmed lesions among men with mCRPC responding to enzalutamide in either setting. Although we originally hypothesized that men with more androgen-receptor-dependent prostate cancer, such as those with low Gleason scores, younger age, or African ancestry,¹²⁻¹⁴ and those with fewer prior hormonal therapies would have a greater probability of pseudoprogression, baseline characteristics were similar in men with or without such new unconfirmed lesions detected on follow-up bone scans. Therefore, men who are likely to have pseudoprogression cannot presently be identified prospectively, and data suggest that all men be carefully observed over time for this phenomenon.

We also determined that, although the change in serum alkaline phosphatase level at week 13 is unlikely to identify or be associated with subsequent progression in bone, a subsequent decrease in serum alkaline phosphatase level after an initial increase at week 13 may be an indicator of response to therapy and bone pseudoprogression. These findings mirror those of Huggins and Hodges¹⁵ in 1941 in their initial description of the changes in alkaline phosphatase level after orchiectomy and likely reflect osteoblastic bone remodeling. Finally, pseudoprogression at the second posttreatment scan was uncommon (3.7% of men in PREVAIL and 0.5% of men in AFFIRM), suggesting that this phenomenon is restricted largely to the first 4 months of treatment.

To clarify and validate these outcomes in each setting, improved functional imaging of the actual tumor in bone is needed. Combined positron emission tomography and computed tomography performed with fluorine F 18-labeled sodium fluoride does not allow direct visualization of all tumors, and, to our knowledge, objective standards do not yet exist for acquiring and interpreting images with this method. Uptake of F18-labeled fluorodeoxyglucose allows more direct visualization of the tumor, but interpretation may be confounded by the presence of osteoblastic remodeling within the responding tumor microenvironment.¹⁶ Additional tumor-specific positron emission tomography probes, such

as prostate-specific membrane antigen, choline, fluciclovine, or dihydrotestosterone,^{17,18} may provide useful discrimination in this clinical setting, where bone imaging results are disconnected from PSA, soft-tissue imaging, and patient symptoms, provided that proper analytic and clinical validation studies are performed in this mCRPC setting. Our work highlights this unmet need for functional bone imaging over time to more fully assess patient benefits.

Limitations

This study has some limitations, including the lack of functional imaging of bone metastases, which limits the ability to differentiate cases of pseudoprogression from true progression. Although most patients did not stop enzalutamide therapy owing to pseudoprogression in this study, our results may inform clinical practice by raising awareness of these unconfirmed bone lesions and the need for subsequent confirmation and attention to other patient and disease manifestations. A second limitation is the retrospective nature of the analysis. However, patients were managed according to PCWG2 guidelines, which anticipated this issue of bone scan pseudoprogression and thus permitted the present analysis of 2 prospective randomized phase 3 trials.

Conclusions

Newly observed but unconfirmed lesions detected on follow-up bone scans are common in patients with mCRPC who have been treated with enzalutamide and should not trigger premature discontinuation of treatment if they are detected within the first 4 months of treatment initiation, particularly in men with chemotherapy-naïve mCRPC whose disease is otherwise responding to enzalutamide. However, new unconfirmed bone lesions in men with mCRPC who were previously treated with docetaxel may reflect disease heterogeneity and true progression in some men. In these men, treatment discontinuation can be considered, but ideally in the context of other disease manifestations such as changes in PSA level, soft-tissue imaging, symptoms, and patient preferences. Most importantly, quality-of-life outcomes did not differ based on the presence of new unconfirmed bone lesions in either trial. These results illustrate the need for close follow-up assessments for these patients. Improvements in imaging assessments of metastatic bone disease are needed.

ARTICLE INFORMATION

Accepted for Publication: August 26, 2019.

Published Online: December 12, 2019.
doi:10.1001/jamaoncol.2019.4636

Open Access: This is an open access article distributed under the terms of the [CC-BY-NC-ND License](https://creativecommons.org/licenses/by-nc-nd/4.0/). © 2019 Armstrong AJ et al. *JAMA Oncology*.

Author Affiliations: Division of Medical Oncology and Urology, Duke Cancer Institute Center for Prostate and Urologic Cancers, Duke University, Durham, North Carolina (Armstrong); Biostatistics, Pfizer Inc, Cambridge, Massachusetts (Al-Adhami);

Biostatistics, Pfizer Inc, San Francisco, California (Lin); Clinical Development, Pfizer Inc, San Francisco, California (Parli); Biostatistics, Astellas Pharma Inc, Northbrook, Illinois (Sugg); Clinical Development, Astellas Pharma Inc, Northbrook, Illinois (Steinberg); Division of Urology, Cliniques Universitaires Saint-Luc, Brussels, Belgium (Tombal); Medical Oncology, Englander Institute for Precision Medicine, Weill Cornell Medicine, New York, New York (Sternberg); Division of Clinical Studies, The Institute of Cancer Research, The Royal Marsden National Health Service Foundation Trust, London, United Kingdom (de Bono); Genitourinary Oncology Service,

Memorial Sloan Kettering Cancer Center, Weill Cornell Medical College, New York, New York (Scher); Division of Hematology/Medical Oncology, OHSU Knight Cancer Institute, Oregon Health & Science University, Portland (Beer).

Author Contributions: Dr Armstrong had full access to all the data in the study and takes responsibility for the integrity of the data and the accuracy of the data analysis.

Concept and design: Armstrong, Lin, Tombal, Sternberg, de Bono, Scher, Beer.

Acquisition, analysis, or interpretation of data: Armstrong, Al-Adhami, Lin, Parli, Sugg, Steinberg, Tombal, de Bono, Scher, Beer.

Drafting of the manuscript: Armstrong, Al-Adhami, Lin, de Bono, Scher, Beer.

Critical revision of the manuscript for important intellectual content: Armstrong, Al-Adhami, Parli, Sugg, Steinberg, Tombal, Sternberg, de Bono, Scher, Beer.

Statistical analysis: Al-Adhami, Lin, Parli, Scher, Beer.

Administrative, technical, or material support:

Armstrong, Parli, Steinberg, de Bono, Beer.

Supervision: Armstrong, Tombal, Sternberg, de Bono, Beer.

Conflict of Interest Disclosures: Dr Armstrong reported receiving honoraria from Dendreon, Janssen Oncology, and Sanofi; serving as a consultant for Dendreon, Sanofi, Astellas, Bayer, Janssen Biotech, Medivation, Novartis, and Pfizer; serving as a member of the speakers' bureaus for Dendreon, Sanofi, and Bayer; receiving money for travel/accommodations expenses from Dendreon, Astellas, Bayer, and Janssen Biotech; receiving research funding from Dendreon, Medivation, Novartis, Pfizer, Active Biotech, Astellas, Bristol-Myers Squibb, Gilead Sciences, and Roche-Genentech; receiving grant money from Janssen Oncology; and receiving research support (to Duke) from Merck, Constellation, and AstraZeneca. Dr Al-Adhami reported being an employee of Pfizer Inc and having stock ownership in Pfizer Inc. Dr Lin reported being a former employee of Pfizer Inc and having stock ownership in Pfizer Inc. Dr Parli reported being a former employee of Pfizer Inc and having stock ownership in Pfizer Inc. Ms Sugg reported being an employee of Astellas Pharma Inc and having stock ownership in AstraZeneca. Dr Steinberg reported being an employee of Astellas Pharma Inc and having an immediate family member with stock ownership in Amgen. Dr Tombal reported receiving honoraria from Amgen, Astellas, Bayer, Ferring, Janssen, Pfizer, and Sanofi; serving as a consultant for Bayer, Ferring, Janssen, Sanofi, Astellas, Steba Biotech, and Takeda; receiving money for travel/accommodation expenses from Bayer, Ferring, Janssen, Sanofi, and Astellas; and receiving research funding from Ferring. Dr Sternberg reported serving as a consultant for Janssen, Astellas, Sanofi, Novartis, Bayer, and AstraZeneca; and receiving prior institutional funding from Cougar Biotechnology (now Janssen), Medivation (now Pfizer), Clovis Oncology, and Roche-Genentech. Dr De Bono reported receiving honoraria from Astellas, AstraZeneca, Genentech-Roche, Pfizer, Sanofi, Bayer, Boehringer Ingelheim, Merck Serono, and Merck Sharp & Dohme; receiving money for travel/accommodations expenses from AstraZeneca, Sanofi, Genmab, GlaxoSmithKline, Orion Pharma GmbH, Qiagen, Taiho Pharmaceutical, and Vertex; receiving research funding from AstraZeneca and Sanofi; and receiving royalties from Abiraterone rewards to inventors and PARP inhibitors and DNA repair defects. Dr Scher reported serving as a consultant for and receiving money for travel/accommodations expenses from Ambray Genetics, ESSA Pharma, Konica Minolta, Medivation, Menarini Silicon, OncoLive Insights, Physicians' Education Resource, Sanofi Aventis, and WCG Oncology; serving as a consultant for Janssen Biotech and Janssen Research & Development; receiving money for travel/accommodations expenses from Asterias Biotherapeutics, Clovis Oncology, Prostate Cancer Foundation, and Sanofi; receiving research funding (grants) from Epic

Sciences, Illumina, Innocrin Pharmaceuticals, Janssen, Medivation, Menarini Silicon, and Thermo Fisher Scientific; and holding leadership or stock ownership in Asterias Biotherapeutics. Dr Beer reported serving as a consultant for AbbVie, Astellas Pharma, AstraZeneca, Bayer, Boehringer Ingelheim, Clovis Oncology, GlaxoSmithKline, Janssen Biotech, Janssen Japan, Merck, and Pfizer; receiving research funding from Boehringer Ingelheim, Alliance Foundation Trials, Corcept Therapeutics, Endocyte, Janssen Research & Development, Medivation-Astellas, OncoGenex, Sotio, and Theraclone Sciences-OncoResponse; and holding stock ownership in Salarius Pharmaceuticals. No other disclosures were reported.

Funding/Support: The PREVAIL and AFFIRM trials and analyses presented in this article were sponsored by Pfizer Inc (New York, New York) and Astellas Pharma, Inc (Northbrook, Illinois), the codvelopers of enzalutamide. Medical writing and editorial support was funded by both sponsor companies.

Role of the Funder/Sponsor: Authors who are employed by the study sponsors Pfizer Inc and Astellas Pharma Inc were involved in the design and conduct of the study: collection, management, analysis, and interpretation of the data; preparation of the manuscript; and the decision to submit the manuscript for publication.

Meeting Presentation: This paper was presented at the Genitourinary Cancers Symposium of the American Society of Clinical Oncology; February 14-16, 2019; San Francisco, California.

Data Sharing Statement: See Supplement 3.

Additional Information: Upon request, and subject to certain criteria, conditions, and exceptions (see <https://www.pfizer.com/science/clinical-trials/trial-data-and-results> for more information), Pfizer will provide access to individual deidentified participant data from Pfizer-sponsored global interventional clinical studies conducted for medicines, vaccines, and medical devices (1) for indications that have been approved in the United States and/or European Union or (2) in programs that have been terminated (ie, development for all indications has been discontinued). Pfizer will also consider requests for the protocol, data dictionary, and statistical analysis plan. Data may be requested from Pfizer trials 24 months after study completion. The deidentified participant data will be made available to researchers whose proposals meet the research criteria and other conditions, and for which an exception does not apply, via a secure portal. To gain access, data requestors must enter into a data access agreement with Pfizer.

Additional Contributions: Medical writing and editorial support funded by Pfizer Inc and Astellas Pharma Inc was provided by Stephanie Vadasz, PhD, and Michele Salernitano, BA, Ashfield Healthcare Communications.

REFERENCES

1. Pollen JJ, Witztum KF, Ashburn WL. The flare phenomenon on radionuclide bone scan in metastatic prostate cancer. *AJR Am J Roentgenol*. 1984;142(4):773-776. doi:10.2214/ajr.142.4.773
2. Johns WD, Garnick MB, Kaplan WD. Leuprolide therapy for prostate cancer: an association with scintigraphic "flare" on bone scan. *Clin Nucl Med*.

1990;15(7):485-487. doi:10.1097/00003072-199007000-00006

3. Scher HI, Halabi S, Tannock I, et al; Prostate Cancer Clinical Trials Working Group. Design and end points of clinical trials for patients with progressive prostate cancer and castrate levels of testosterone: recommendations of the Prostate Cancer Clinical Trials Working Group. *J Clin Oncol*. 2008;26(7):1148-1159. doi:10.1200/JCO.2007.12.4487
4. Scher HI, Morris MJ, Stadler WM, et al; Prostate Cancer Clinical Trials Working Group 3. Trial design and objectives for castration-resistant prostate cancer: updated recommendations from the Prostate Cancer Clinical Trials Working Group 3. *J Clin Oncol*. 2016;34(12):1402-1418. doi:10.1200/JCO.2015.64.2702
5. Ryan CJ, Shah S, Efstathiou E, et al. Phase II study of abiraterone acetate in chemotherapy-naive metastatic castration-resistant prostate cancer displaying bone flare discordant with serologic response. *Clin Cancer Res*. 2011;17(14):4854-4861. doi:10.1158/1078-0432.CCR-11-0815
6. Coleman RE, Mashiter G, Whitaker KB, Moss DW, Rubens RD, Fogelman I. Bone scan flare predicts successful systemic therapy for bone metastases. *J Nucl Med*. 1988;29(8):1354-1359.
7. Pollen JJ, Schlaer WJ. Osteoblastic response to successful treatment of metastatic cancer of the prostate. *AJR Am J Roentgenol*. 1979;132(6):927-931. doi:10.2214/ajr.132.6.927
8. Beer TM, Armstrong AJ, Rathkopf DE, et al; PREVAIL Investigators. Enzalutamide in metastatic prostate cancer before chemotherapy. *N Engl J Med*. 2014;371(5):424-433. doi:10.1056/NEJMoa1405095
9. Scher HI, Fizazi K, Saad F, et al; AFFIRM Investigators. Increased survival with enzalutamide in prostate cancer after chemotherapy. *N Engl J Med*. 2012;367(13):1187-1197. doi:10.1056/NEJMoa1207506
10. World Medical Association. World Medical Association Declaration of Helsinki: ethical principles for medical research involving human subjects. *JAMA*. 2013;310(20):2191-2194. doi:10.1001/jama.2013.281053
11. Eisenhauer EA, Therasse P, Bogaerts J, et al. New response evaluation criteria in solid tumours: revised RECIST guideline (version 1.1). *Eur J Cancer*. 2009;45(2):228-247. doi:10.1016/j.ejca.2008.10.026
12. Weischenfeldt J, Simon R, Feuerbach L, et al. Integrative genomic analyses reveal an androgen-driven somatic alteration landscape in early-onset prostate cancer. *Cancer Cell*. 2013;23(2):159-170. doi:10.1016/j.ccr.2013.01.002
13. Kishan AU, Wang X, Seiferheld W, et al. Association of Gleason grade with androgen deprivation therapy duration and survival outcomes: a systematic review and patient-level meta-analysis. *JAMA Oncol*. 2019;5(1):91-96. doi:10.1001/jamaoncol.2018.3732
14. George DJ, Heath EI, Sartor O, et al. Abi race: a prospective, multicenter study of black (B) and white (W) patients (pts) with metastatic castrate resistant prostate cancer (mCRPC) treated with abiraterone acetate and prednisone (AAP). *J Clin Oncol*. 2018;36(18_suppl):LBA5009. doi:10.1200/JCO.2018.36.18_suppl.LBA5009
15. Huggins C, Hodges CV. Studies on prostatic cancer, I: the effect of castration, of estrogen and androgen injection on serum phosphatases in

metastatic carcinoma of the prostate. *CA Cancer J Clin.* 1972;22(4):232-240. doi:10.3322/canjclin.22.4.232

16. Harmon SA, Perk T, Lin C, et al. Quantitative assessment of early [¹⁸F]sodium fluoride positron emission tomography/computed tomography

response to treatment in men with metastatic prostate cancer to bone. *J Clin Oncol.* 2017;35(24):2829-2837. doi:10.1200/JCO.2017.72.2348

17. Lindenberg L, Choyke P, Dahut W. Prostate cancer imaging with novel PET tracers. *Curr Urol Rep.* 2016;17(3):18. doi:10.1007/s11934-016-0575-5

18. Smith CP, Laucis A, Harmon S, et al. Novel imaging in detection of metastatic prostate cancer. *Curr Oncol Rep.* 2019;21(4):31. doi:10.1007/s11912-019-0780-8

Invited Commentary

Radioisotope Imaging and Therapy for Bone Metastasis in Men With Castration-Resistant Prostate Cancer

Umang Swami, MD; Jeffrey T. Yap, PhD; Neeraj Agarwal, MD

The current issue of *JAMA Oncology* includes 2 studies focusing on the use of radioisotopes for the management of bone lesions in patients with metastatic castration-resistant prostate cancer (mCRPC).^{1,2} In the first study, Armstrong and colleagues¹ report the association between new unconfirmed bone lesions detected



Related articles pages 206 and 217

on the first or second posttreatment bone scans and outcomes in patients with mCRPC undergoing treatment with enzalutamide who otherwise had stable or decreasing prostate-specific antigen levels or soft-tissue lesions. This retrospective analysis involved 1672 men with mCRPC from 2 randomized clinical placebo-controlled phase 3 studies that investigated enzalutamide in the docetaxel-naive (PREVAIL [A Safety and Efficacy Study of Oral MDV3100 in Chemotherapy-Naive Patients With Progressive Metastatic Prostate Cancer; NCT01212991]) and postdocetaxel (AFFIRM [Safety and Efficacy Study of MDV3100 in Patients With Castration-Resistant Prostate Cancer Who Have Been Previously Treated With Docetaxel-based Chemotherapy; NCT00974311]) settings. Early pseudoprogression was defined as 1 or more new unconfirmed lesions detected on the first posttreatment bone scan in patients with disease otherwise responding to treatment at week 9 in PREVAIL and at week 13 in AFFIRM, and late pseudoprogression was defined as 1 or more new unconfirmed lesions detected on the second posttreatment bone scan in patients with disease otherwise responding to treatment at week 17 in PREVAIL and at week 25 in AFFIRM. Unconfirmed bone lesions were found in 27.5% of patients in the predocetaxel setting (PREVAIL) and 18.1% of patients in the postdocetaxel setting (AFFIRM). Patients with stable disease and disease responding to treatment with pseudoprogression in the predocetaxel group had similar overall survival (OS) as those with no new unconfirmed bone lesions, confirming pseudoprogression. However, the postdocetaxel group of patients with bone pseudoprogression had significantly worse OS (HR, 1.94; 95% CI, 1.10-3.44) compared with responding patients with no new unconfirmed bone lesions, suggesting true progression of disease.

Within the limitations of retrospective analysis, these findings suggest that continuing enzalutamide for patients with mCRPC who have received docetaxel and have new unconfirmed bone lesions may not provide survival benefit but, instead, may expose them to financial burdens and treatment-

related toxic effects while delaying other beneficial therapies. Findings from the study by Armstrong and colleagues¹ present an interesting challenge to the current Prostate Cancer Working Group 3 criteria, which use a higher threshold of 2 or more new bone lesions for progression in the first posttreatment scan and requires confirmation in a subsequent scan.³ Future revisions to Prostate Cancer Working Group 3 criteria may need to consider different rules for patients with mCRPC who are docetaxel naive vs those who have received docetaxel treatment. Also, it is not known whether bone pseudoprogression will carry similar implications with other androgen axis inhibitors, such as abiraterone. Maybe the answer lies not only in further validation of these findings but in a more precise assessment of bone metastasis. Some of these approaches include better quantitation of bone metastasis burden with automated bone scan index or emerging imaging approaches, such as whole-body magnetic resonance imaging and positron emission tomography using radiopharmaceuticals (such as choline and fluciclovine), as well as prostate-specific membrane antigen (PSMA) positron emission tomography.⁴ Although they have been extensively studied in soft-tissue disease, it is time for these novel imaging modalities to be incorporated into prospective clinical trials to also evaluate bone metastasis burden, which may eventually lead to a more accurate response assessment of novel therapeutic approaches.

The second study in this issue of *JAMA Oncology*, by Terrisse et al,² evaluates the association of alpha (radium 223) and beta (strontium 89) radioisotopes with OS in patients with mCRPC and investigates whether the observed difference in benefit in clinical trials is due to their differential mechanisms of action or to differences in study design and patient selection. This meta-analysis used individual patient data from 2081 men with mCRPC enrolled in 6 randomized clinical trials from January 1993 to June 2013. The primary end point was OS, and the secondary end point was symptomatic skeletal event-free survival. Eighty percent of the data came from 2 phase 3 trials, ALSYMPCA (A Phase III Study of Radium-223 Dichloride in Patients With Symptomatic Hormone Refractory Prostate Cancer With Skeletal Metastases) and TRAPEZE (A Randomised Phase III Trial of Docetaxel Plus Prednisolone vs Docetaxel With Prednisolone Plus Either Zoledronic Acid, Strontium-89 or Both Agents Combined). A significant benefit in OS and symptomatic skeletal events was observed with alpha but not with beta