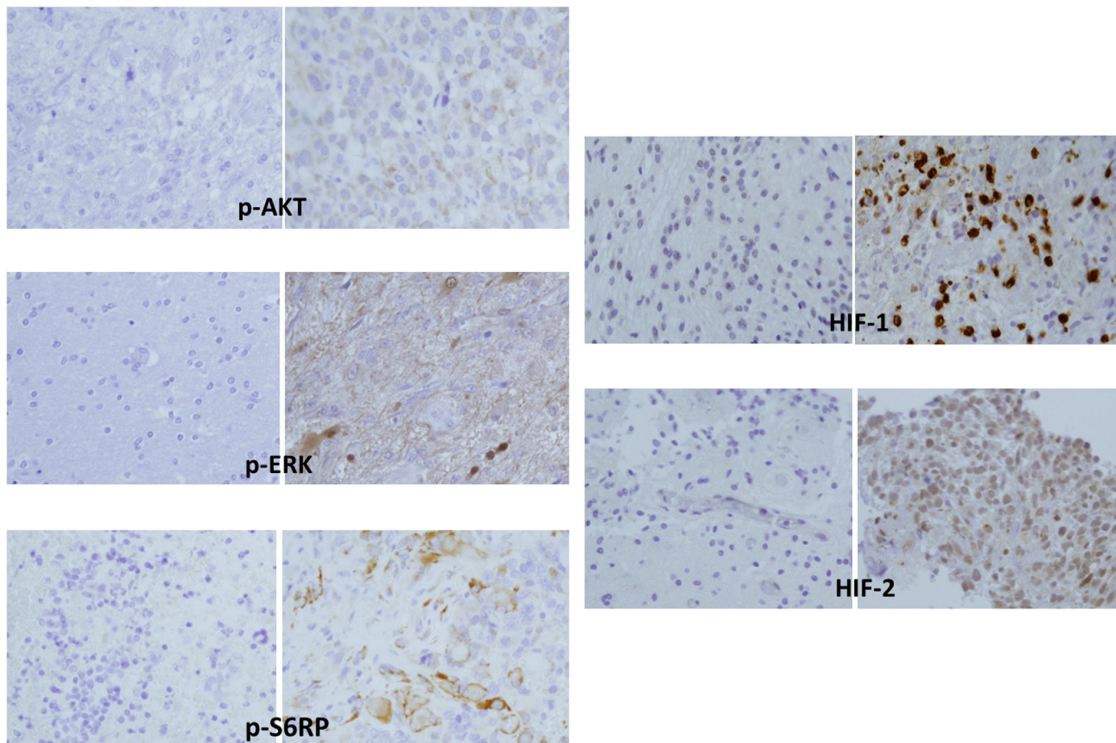


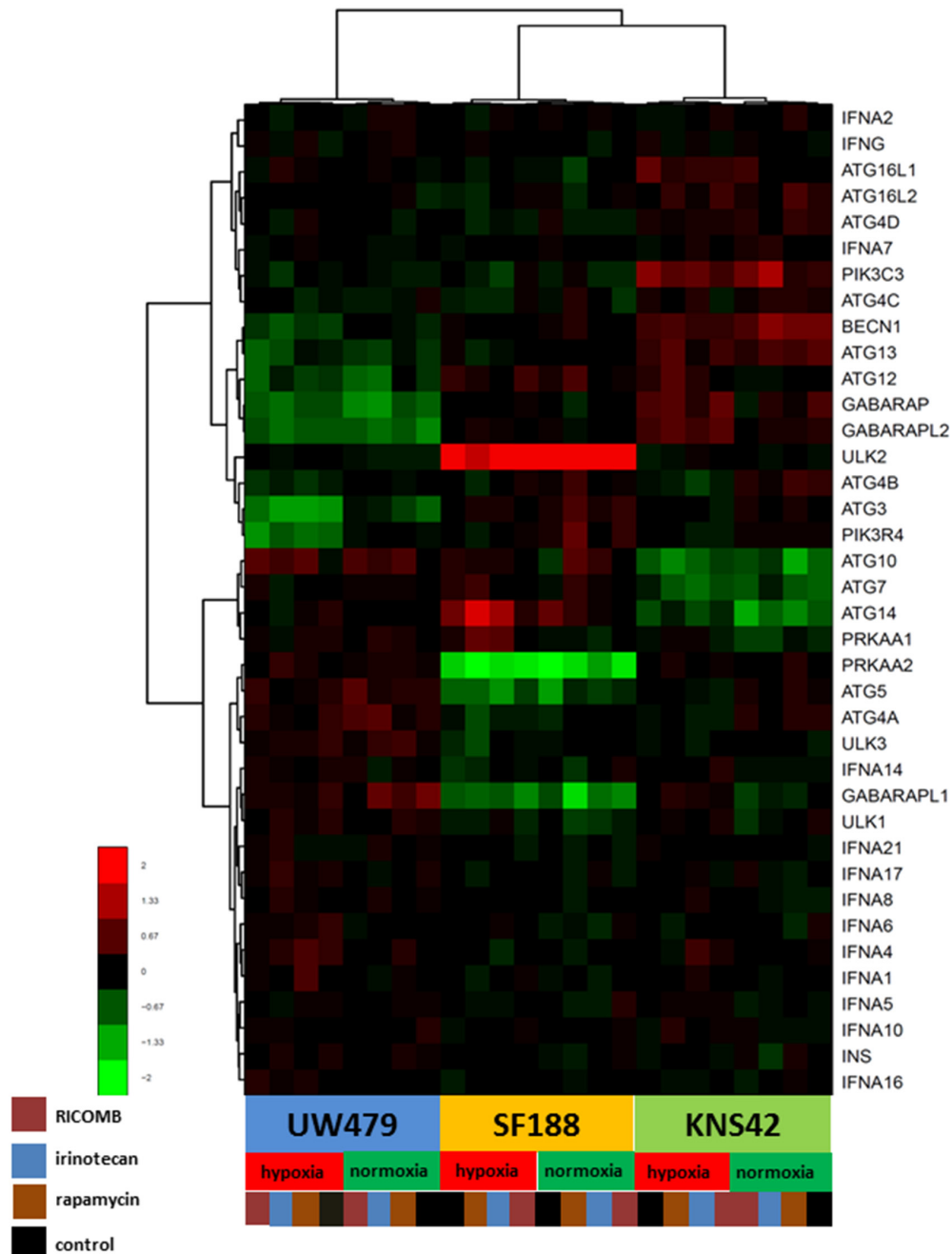
Characterization of the transcriptional and metabolic responses of pediatric high grade gliomas to mTOR-HIF-1 α axis inhibition

SUPPLEMENTARY FIGURES



Supplementary Data 1: Immunohistochemical analyses on tumor slides exploring mTor/HIF-1 α pathway. An example of negative result (left side) and paired positive staining (right side) is showed for each biomarker involved in mTor/HIF-1 α pathway (e.g. p-AKT, p-ERK, p-S6RP, HIF-1 α and HIF-2 α) (magnification x40).

autophagy pathway



Supplementary Data 2: Effects of rapamycin, irinotecan and the combination of both (RICOMB) on autophagy pathway in KNS42, SF188 and UW479.