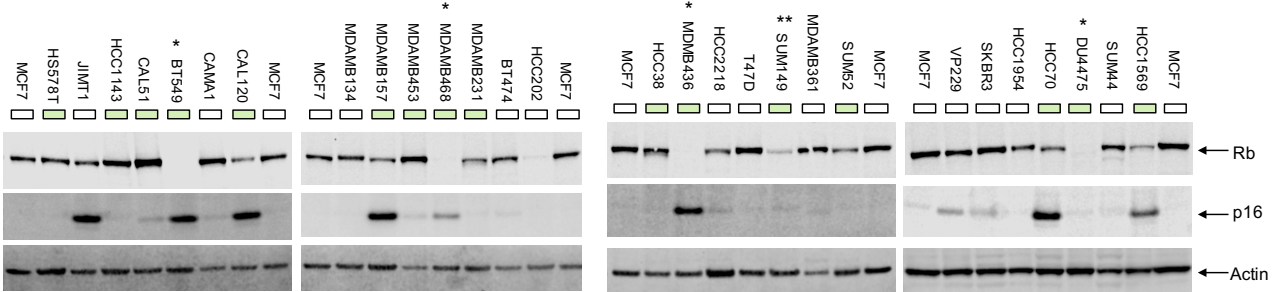


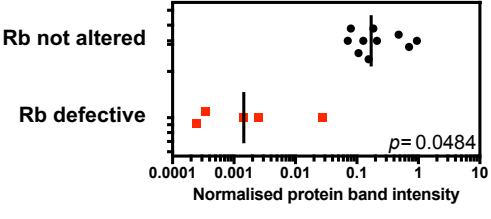
Figure 1

A.

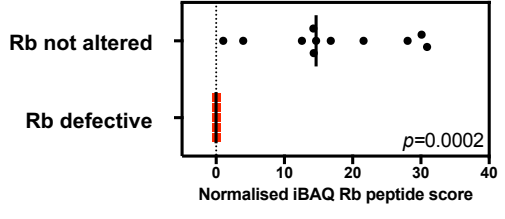
- ☐ Triple negative
- * *RB1* gene truncating mutation or deletion
- ** Reduced *RB1* mRNA



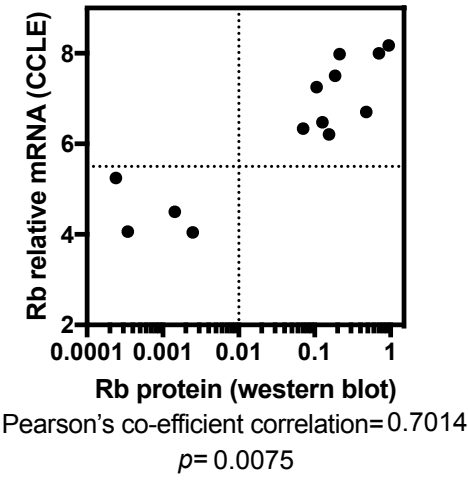
B.



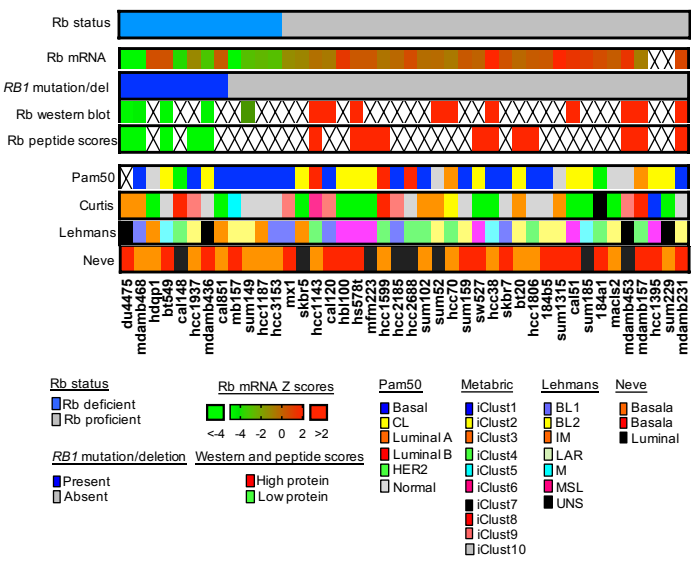
C.



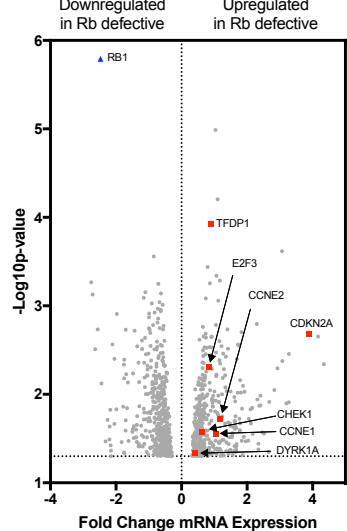
D.



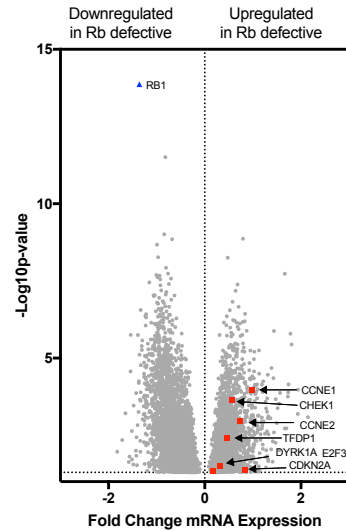
E.



F. Tumour cell lines



G. TCGA TNBCs



H. Metabrc TNBCs

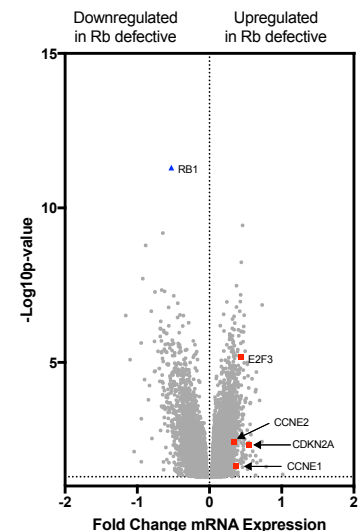


Figure 2.

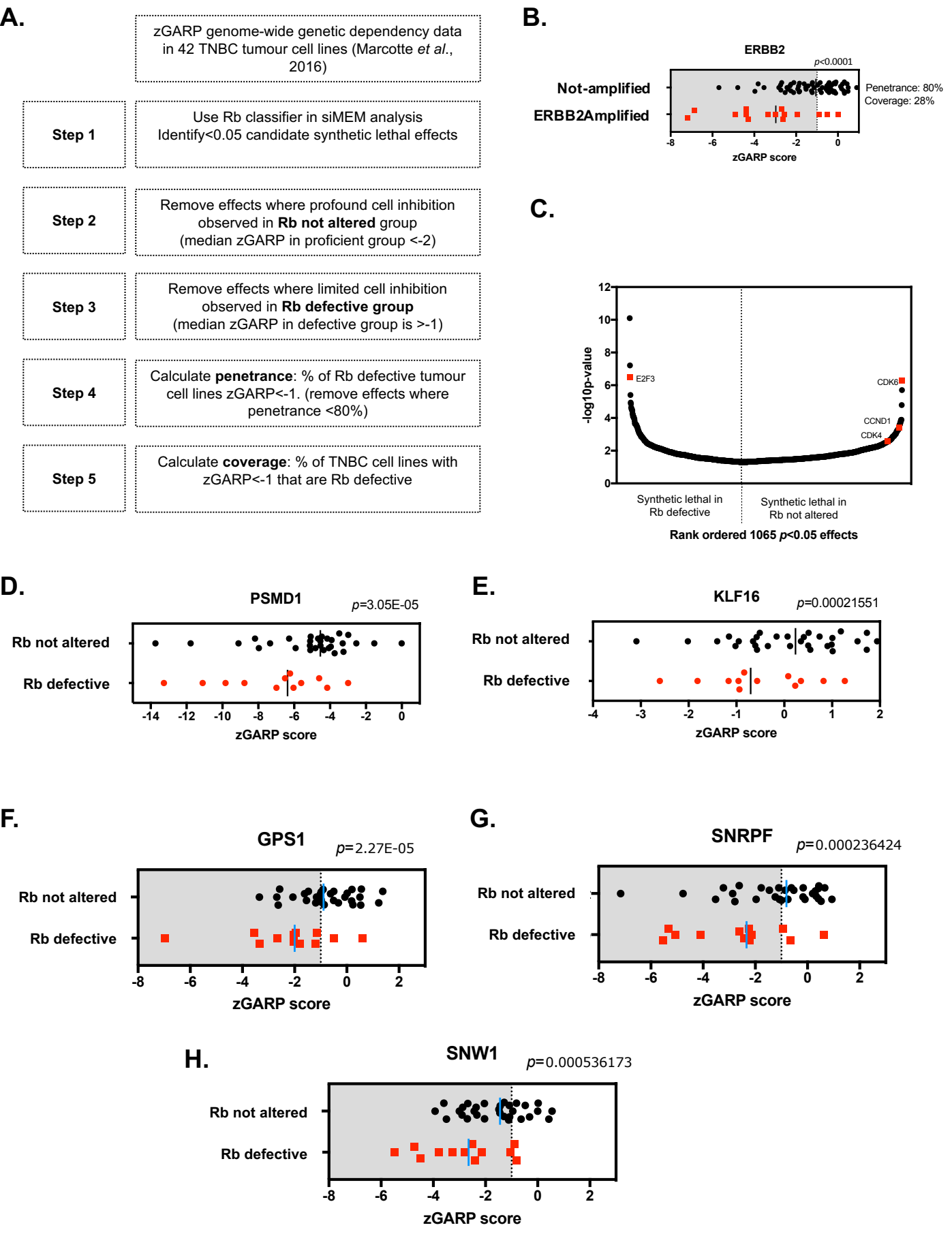


Figure 3.

A.

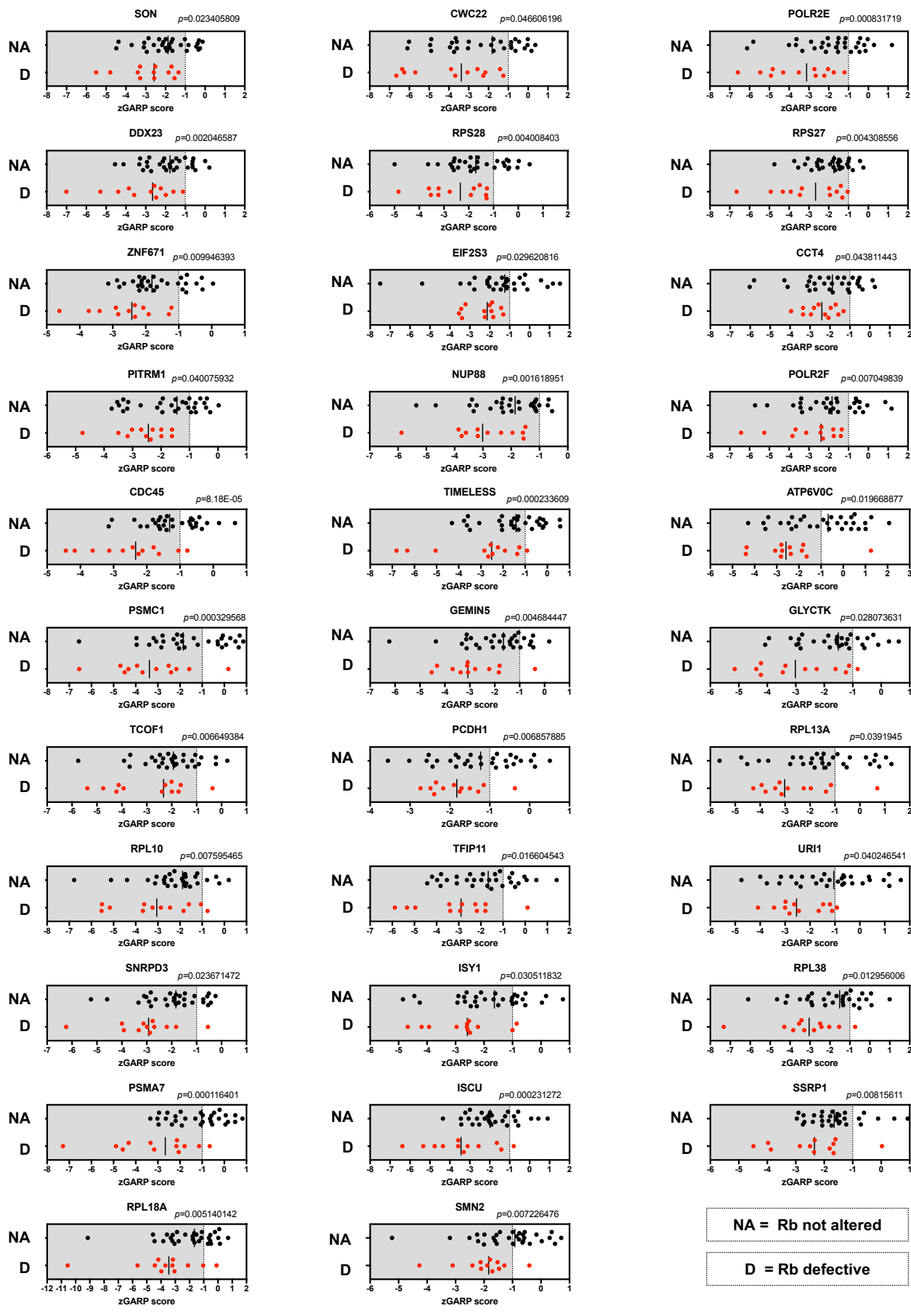


Figure 4.

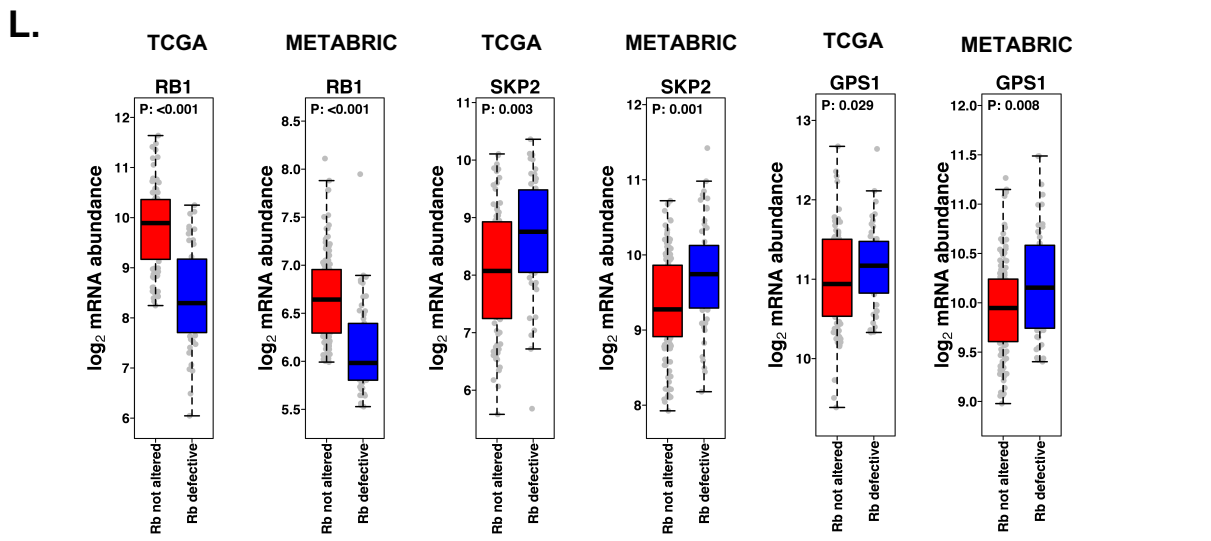
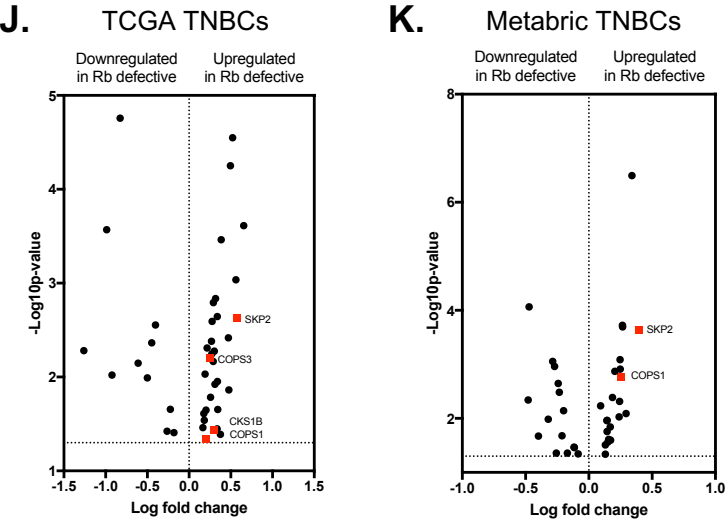
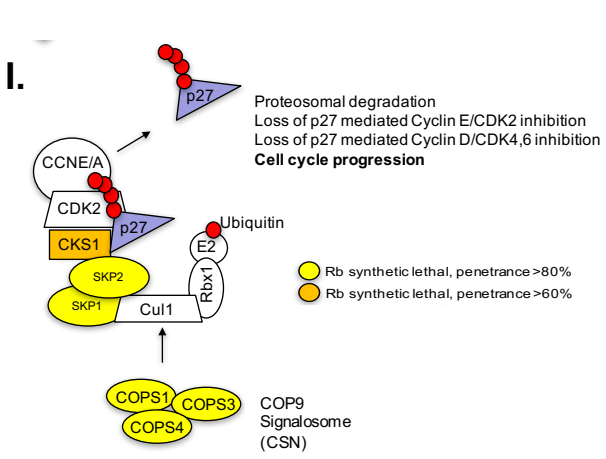
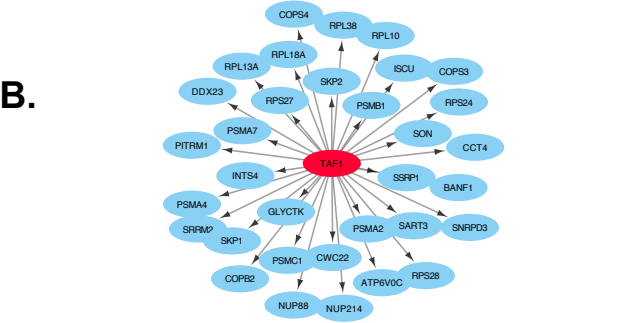
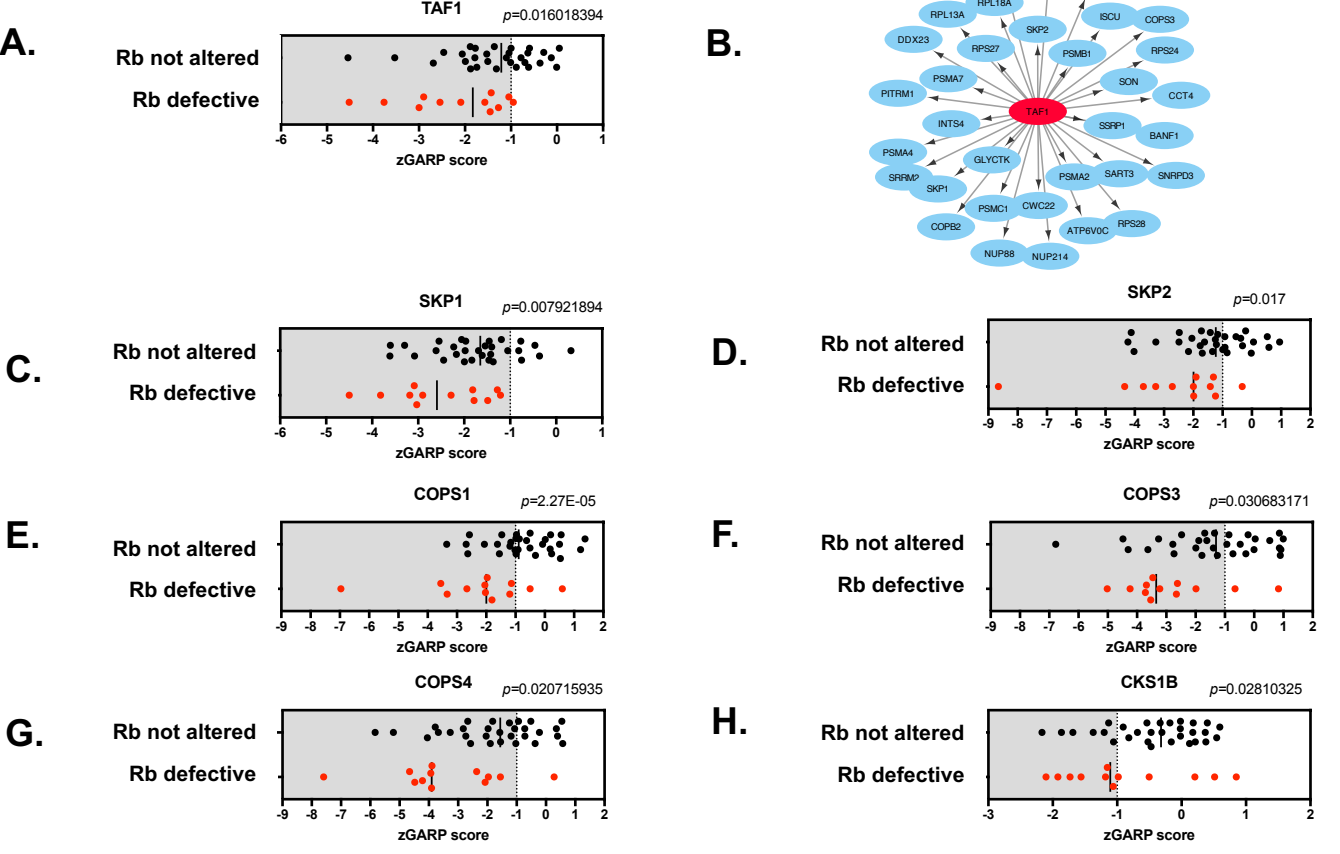


Figure 5.

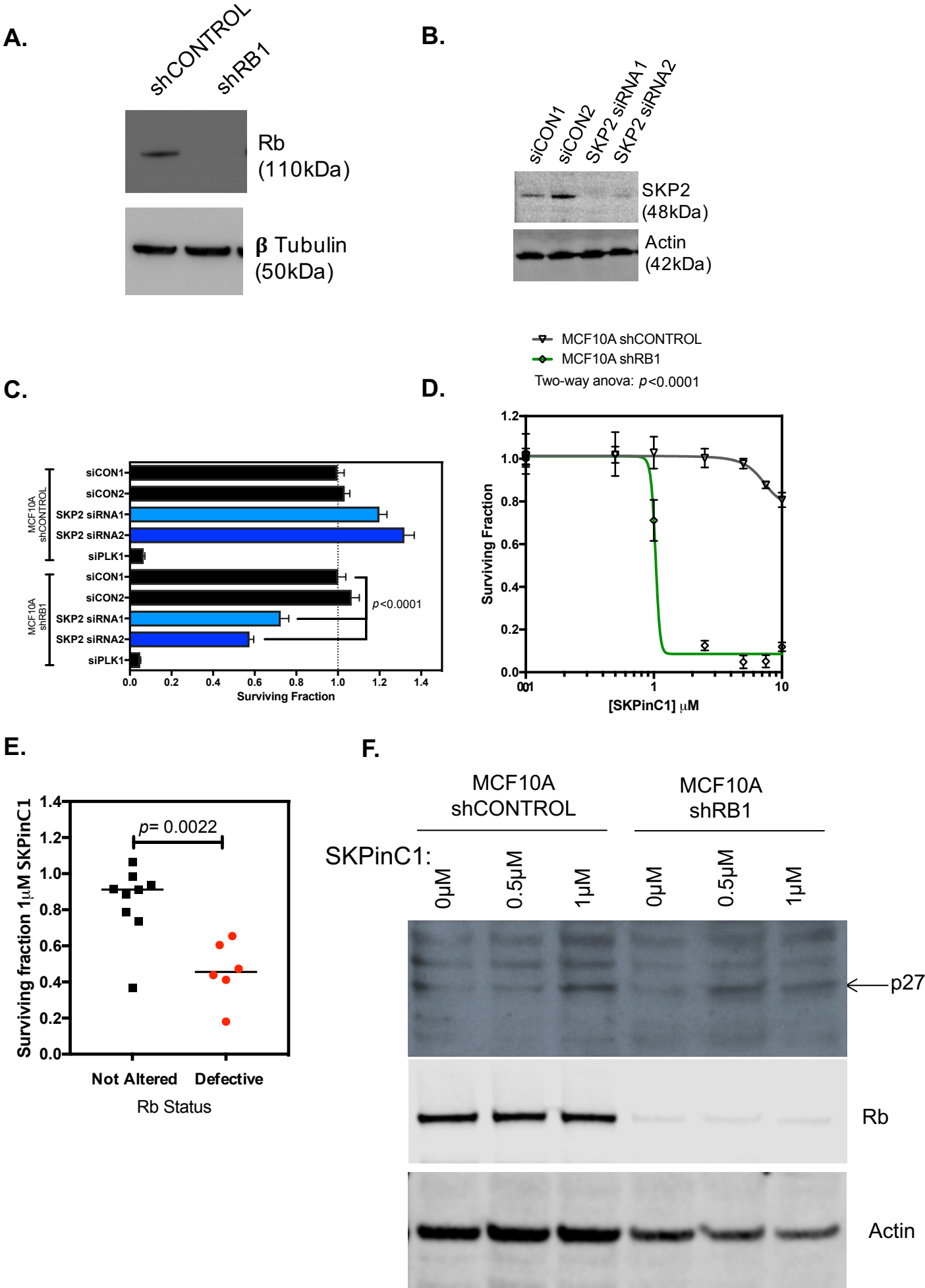


Figure 6.

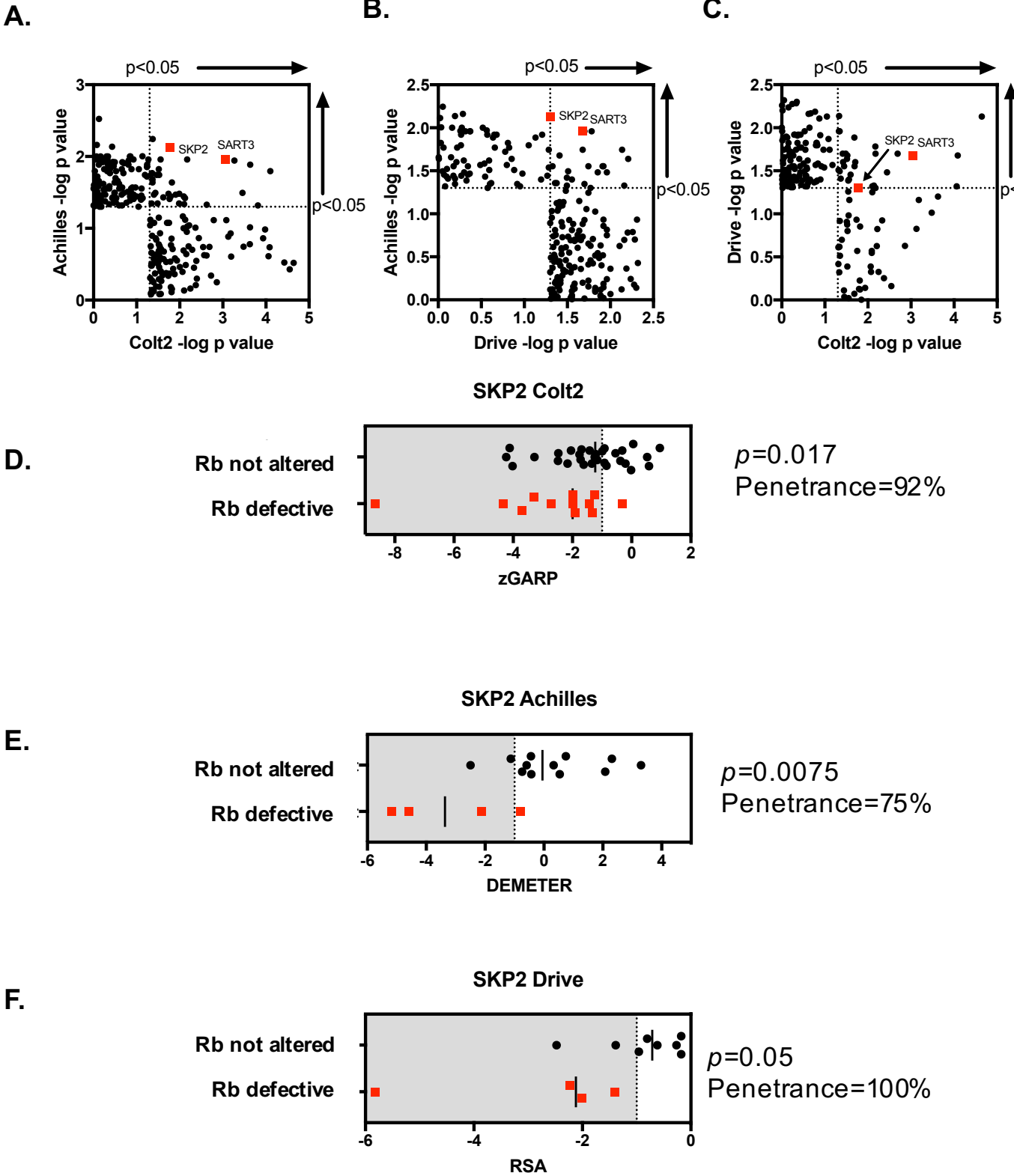
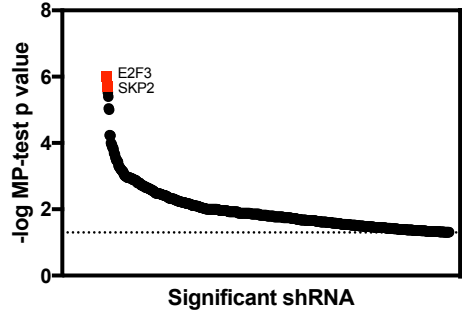
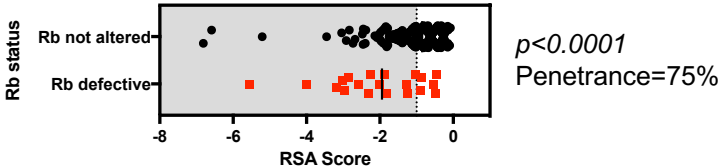


Figure 7.

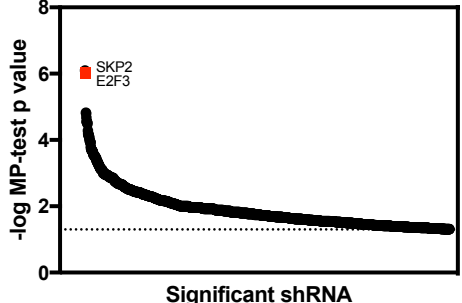
A. DRIVE data excluding breast tumour cell lines



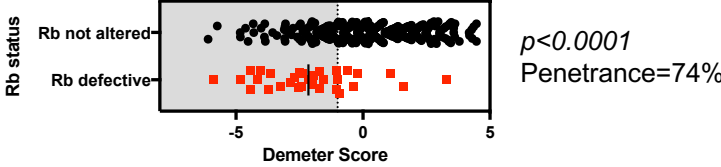
B. SKP2: DRIVE data excluding breast tumour cell lines



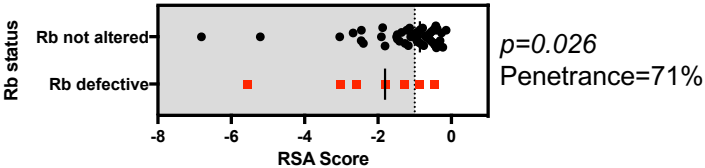
C. Achilles data excluding breast tumour cell lines



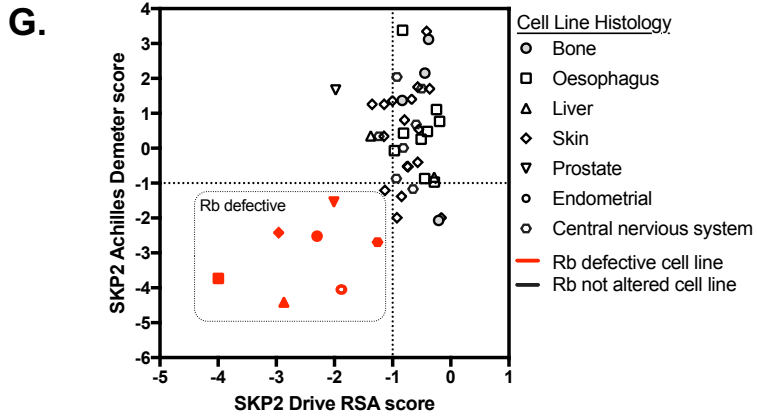
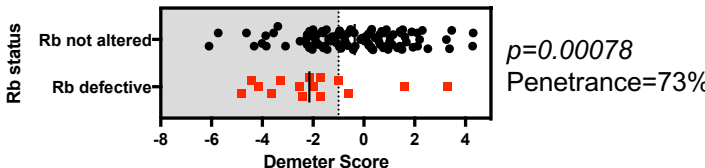
D. SKP2: Achilles data excluding breast tumour cell lines



E. SKP2: DRIVE data in lung cancer tumour cell lines



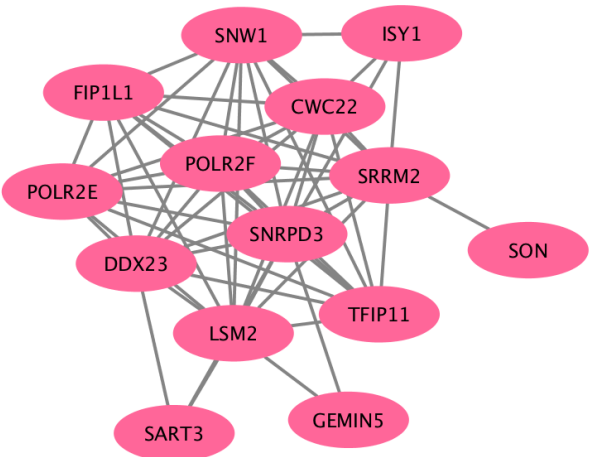
F. SKP2: Achilles data in lung cancer tumour cell lines



Supplementary Figure 1.

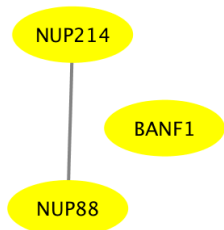
A.

mRNA splicing, via spliceosome



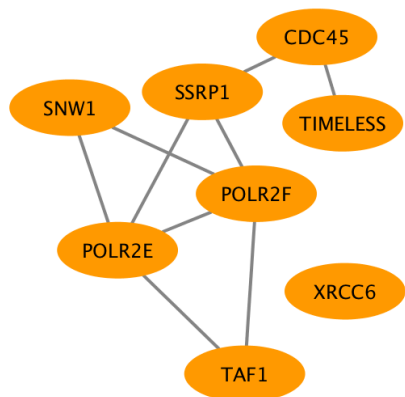
B.

Mitotic nuclear envelope disassembly



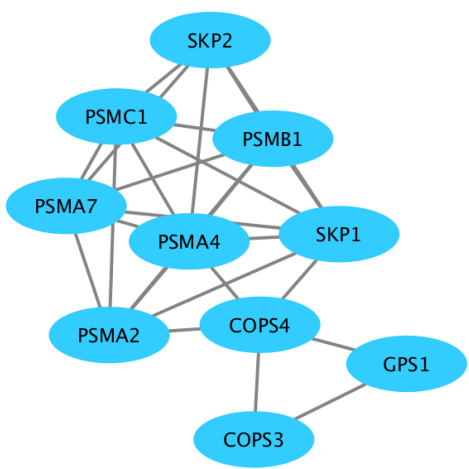
C.

Cellular response to DNA damage



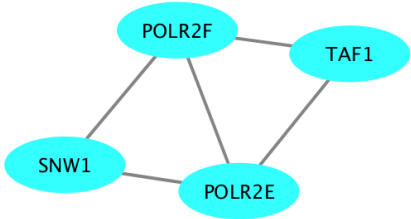
D.

Post-translational protein modification



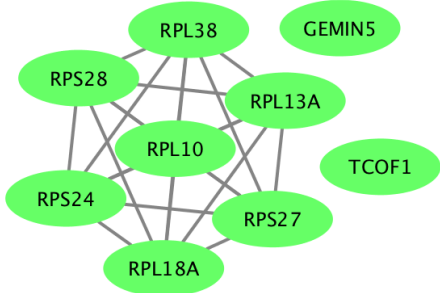
E.

RNA polymerase II transcription

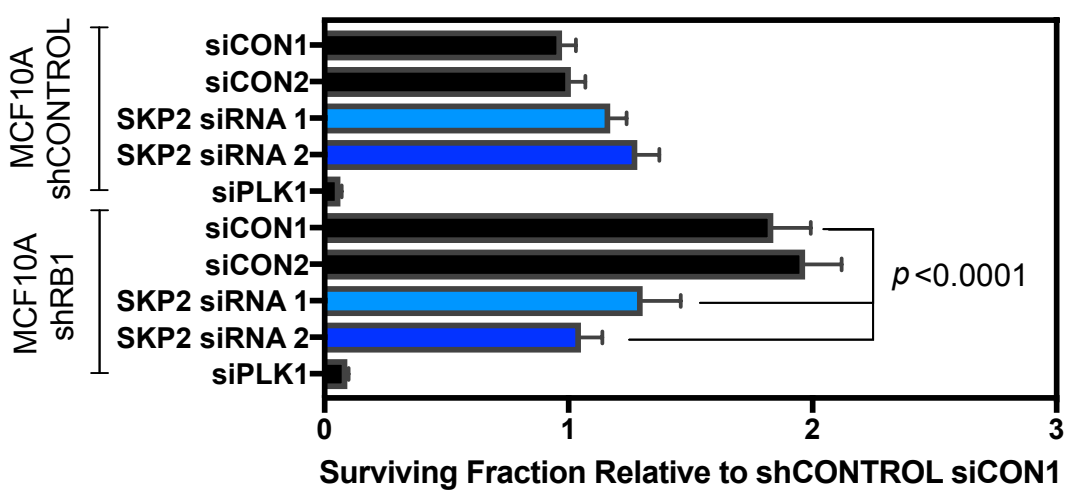


F.

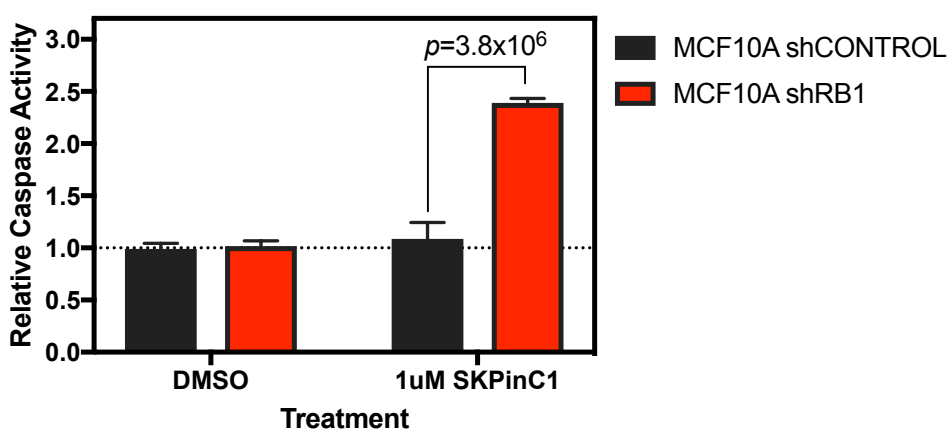
Regulation of translation



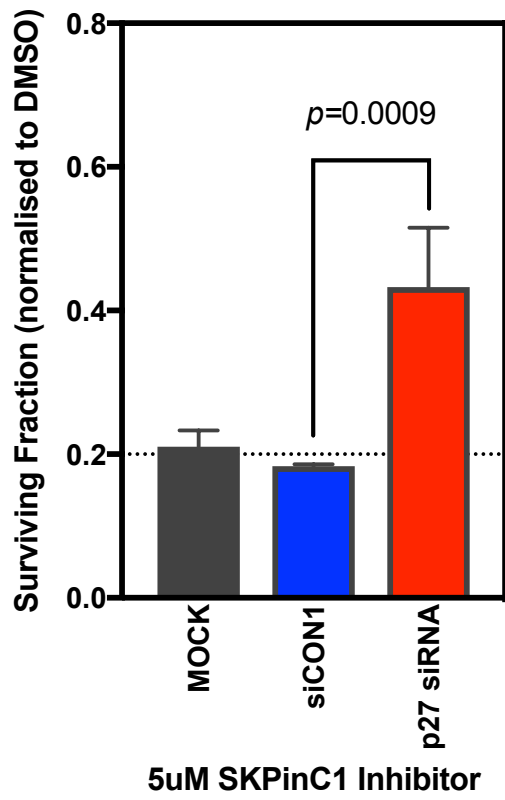
Supplementary Figure 2.



Supplementary Figure 3.

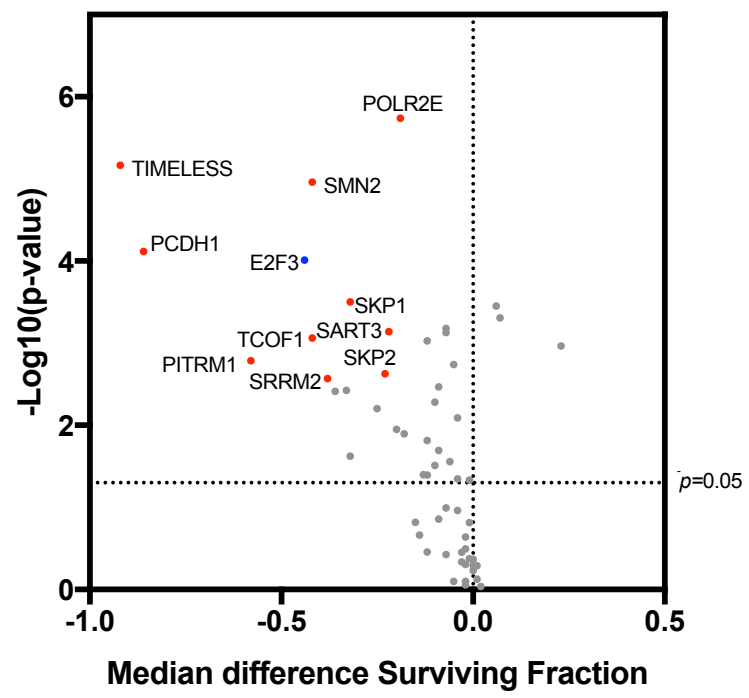


Supplementary Figure 4.

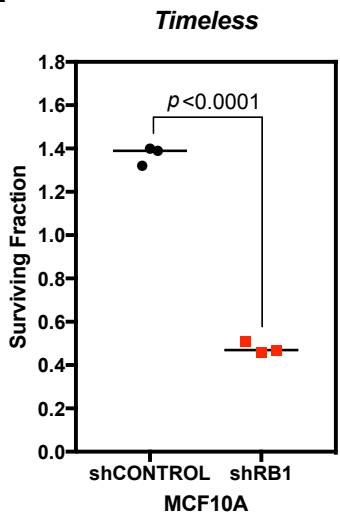


Supplementary Figure 5.

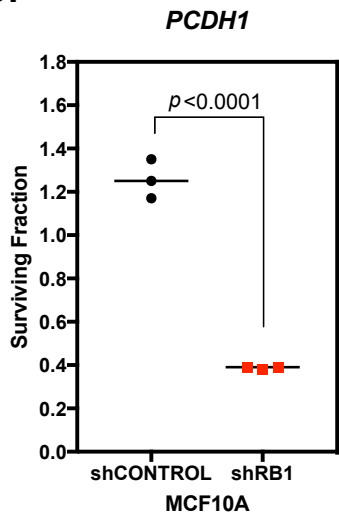
A.



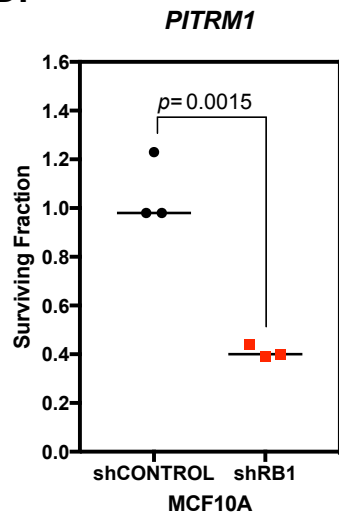
B.



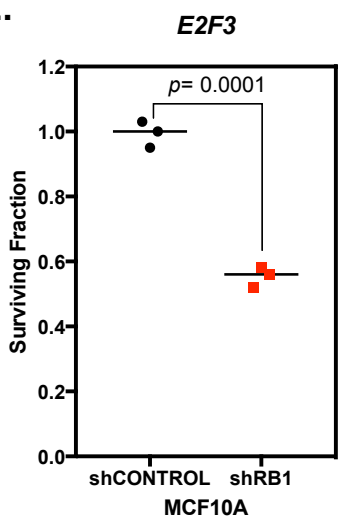
C.



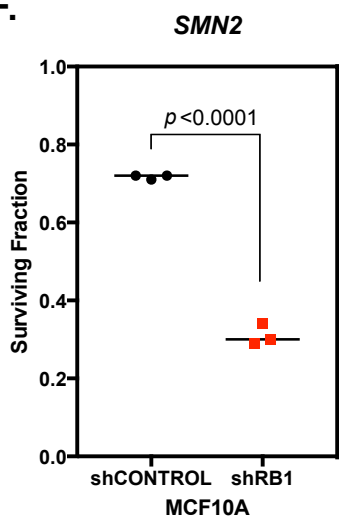
D.



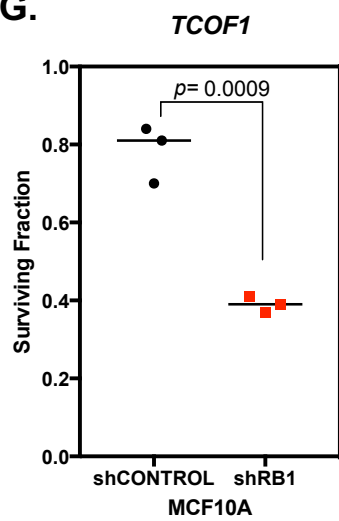
E.



F.

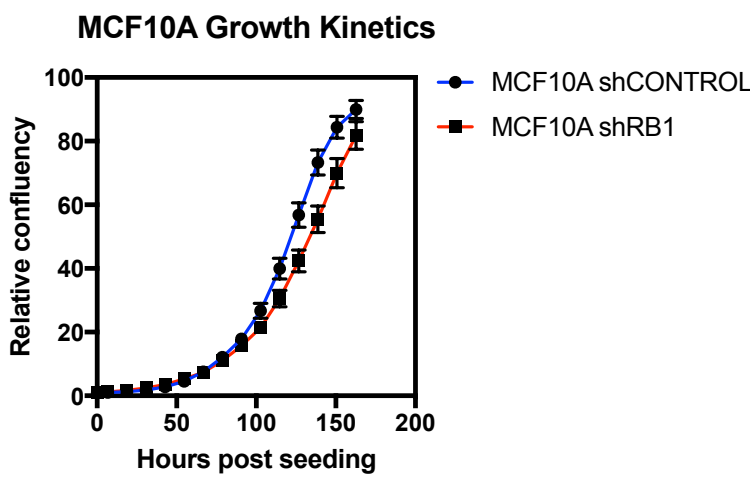


G.



Supplementary Figure 6.

A.



B.

